

**U.S. PUBLIC LAND SURVEY MONUMENT RECORD**

(As Required By s. A-E 7.08, WI Adm. Code)

History of original corner establishment and subsequent restorations and description of any record, monument, occupational, testimonial or other evidence considered: *ownership records show continuous occupation until the last generation. Bob Klindt showed me where the old corner was removed in the 1960's. I found buried fences north and west and some standing fence west of a 24" hickory that was inside the corner. I also found many buried ancient items that had been thrown in the corner. I set a 1" x 30" Iron Rod with Aluminum cap and set ties as shown.*

Corner was: (Check All That Apply)

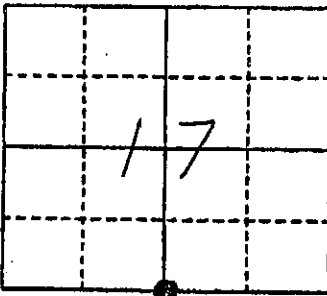
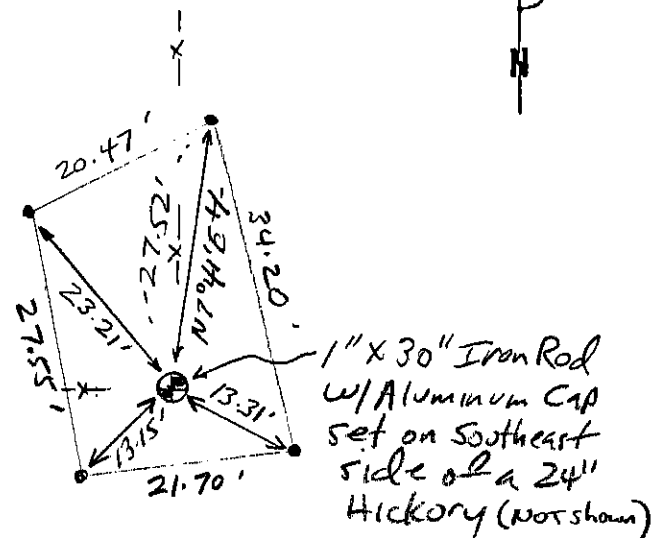
- Restored through acceptance of an obliterated evidence location
- Restored through acceptance of a found perpetuated location
- Considered a lost corner and reestablished through lost corner proportionate methods (include a plan view drawing showing distances and directions to other Public Land Survey Corners used for proportioning and determining the corner location)
- Restored or reestablished in a location that differs from a previous restoration or reestablishment (include a plan view drawing and indicate what was set and/or found)

Describe the monument and accessories used to perpetuate the location of this corner. (Include a plan view drawing and indicate what was set and/or found)

*Grant County Coordinates  
(N) 606,426.24  
(E) 870,278.09*

*1" = 20' +/-  
Legend  
• 12" Landscape Spike Set  
-x- fence remnants*

The 5 1/4  
corner of Section 17  
T. 7 N., R. 1W S.,  
Grant County, Wisconsin  
Job ID: 2003-60  
Book # 7



● = Location of Corner



1 Michael R. LaRosa  
Type or print name) certify that the corner location shown on this record was determined by me or under my direction and control and that this U.S. Public Land Survey Monument Record is correct and complete to the best of my knowledge and belief.  
Michael R. LaRosa 4/13/2004  
Signature Date

Index No. 70