

U.S. PUBLIC LAND SURVEY MONUMENT RECORD

(As Required By s. A-E 7.08, WI Adm. Code)

History of original corner establishment and subsequent restorations and description of any record, monument, occupational, testimonial or other evidence considered:

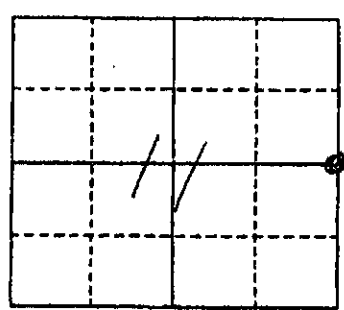
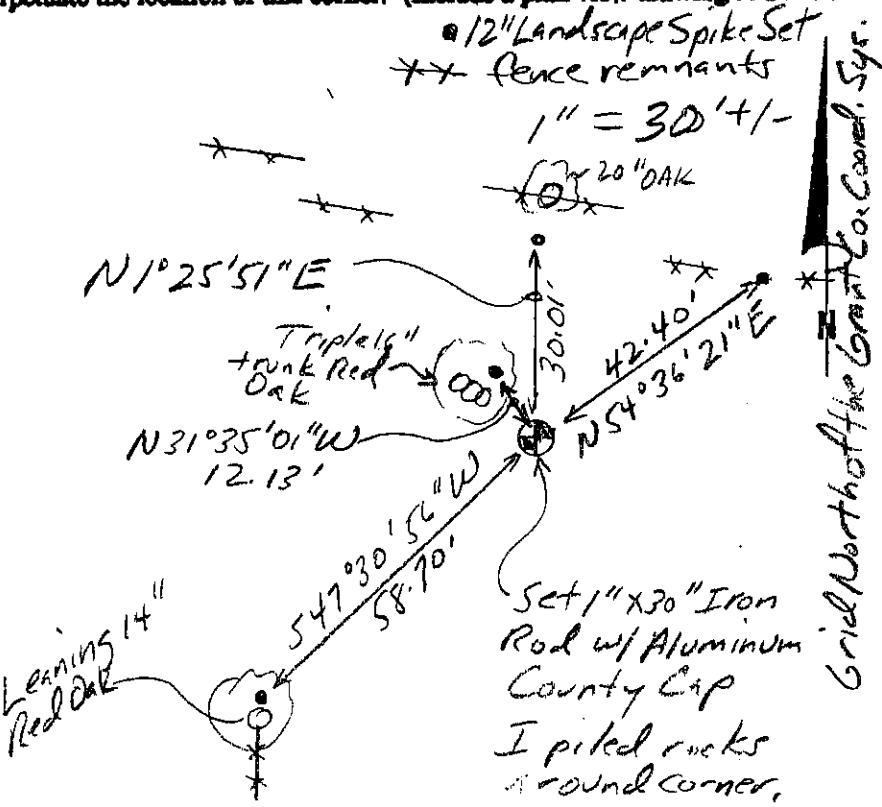
*I found no survey records of this corner since the original government survey. Several old east-west fences\* at different northings were found north of the corner and a fence\* to the south was located 40' +/- to the west of the corner. Some of the fences noted appear to have been placed at 1320', 2640', and 280' from other corners in the area where substantial shortages in the original government work exist. Someone worked really hard to lay these lines out but did not use the official record or observe relationships to other corners. I reset by single proportional measurement.*

- Corner was: (Check All That Apply)
- Restored through acceptance of an obliterated evidence location
  - Restored through acceptance of a found perpetuated location
  - Considered a lost corner and reestablished through lost corner proportionate methods (include a plan view drawing showing distances and directions to other Public Land Survey Corners used for proportioning and determining the corner location)
  - Restored or reestablished in a location that differs from a previous restoration or reestablishment (include a plan view drawing and indicate what was set and/or found)

SEE SECTION SUMMARY SHEET FOR DETAILS!

Describe the monument and accessories used to perpetuate the location of this corner. (Include a plan view drawing and indicate what was set and/or found)

Grant County  
Coordinates  
(N) 614519.32  
(E) 888671.03  
The E 1/4  
corner of Section 11  
T. 7 N., R. 1 W  
Grant County, Wisconsin  
Job ID: 2005-40  
Book # 9



● = Location of Corner

Michael R. LaRosa  
Type or print name certify that the corner location shown on this record was determined by me or under my direction and control and that this U.S. Public Land Survey Monument Record is correct and complete to the best of my knowledge and belief.  
Michael R. LaRosa 12/1/2005  
Signature Date



Index No. 39