

U.S. PUBLIC LAND SURVEY MONUMENT RECORD

(As Required By s. A-E 7.08, WI Adm. Code)

History of original corner establishment and subsequent restorations and description of any record, monument, occupational, testimonial or other evidence considered: *The corner was noted and used in a survey by Kerth Dalsing dated 11/30/1989 and revised 4/12/1990. No monument or tie sheet was found. I computed the corner at 1/2 the distance on line between aluminum monuments found at the NW and NE corners @ 589°29'01"E, 2662.14' to each. I found fence remnants to the east and south of the corner*

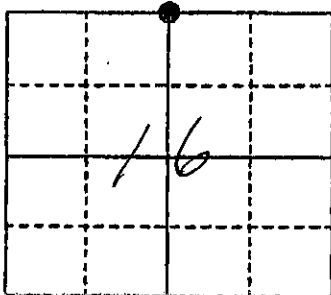
Corner was: (Check All That Apply)

- Restored through acceptance of an obliterated evidence location
- Restored through acceptance of a found perpetuated location
- Considered a lost corner and reestablished through lost corner proportionate methods (include a plan view drawing showing distances and directions to other Public Land Survey Corners used for proportioning and determining the corner location)
- Restored or reestablished in a location that differs from a previous restoration or reestablishment (include a plan view drawing and indicate what was set and/or found)

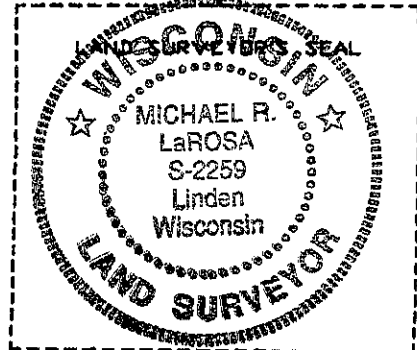
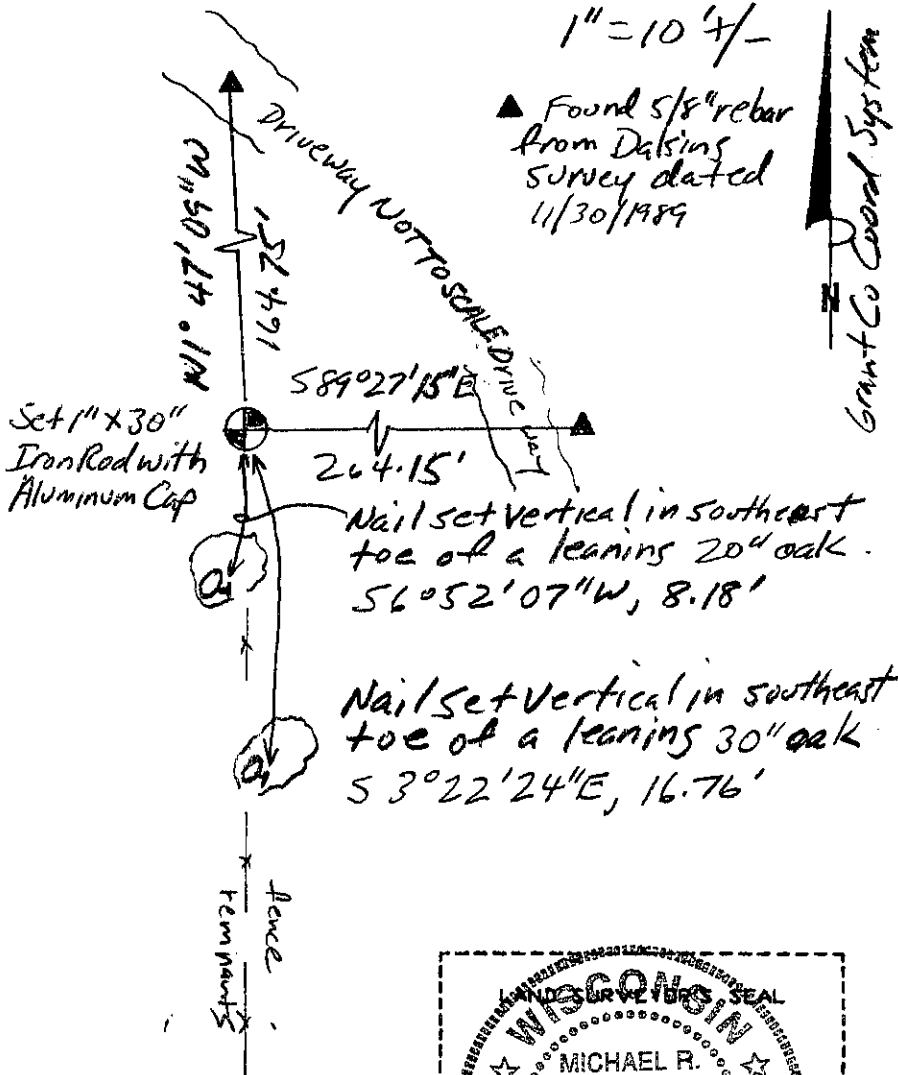
Describe the monument and accessories used to perpetuate the location of this corner. (Include a plan view drawing and indicate what was set and/or found)

*Grant County Coordinator
(N) 611767.79
(E) 875546.42*

The N 1/4
corner of Section 16
T. 7 N., R. 1 W
Grant County, Wisconsin
Job ID: 2004-25
Book # 8



● = Location of Corner



Michael R. LaRosa
Type or print name) certify that the corner location shown on this record was determined by me or under my direction and control and that this U.S. Public Land Survey Monument Record is correct and complete to the best of my knowledge and belief.
Michael R. LaRosa - 11/15/2004
Signature Date

Index No. 48