

**U.S. PUBLIC LAND SURVEY MONUMENT RECORD**

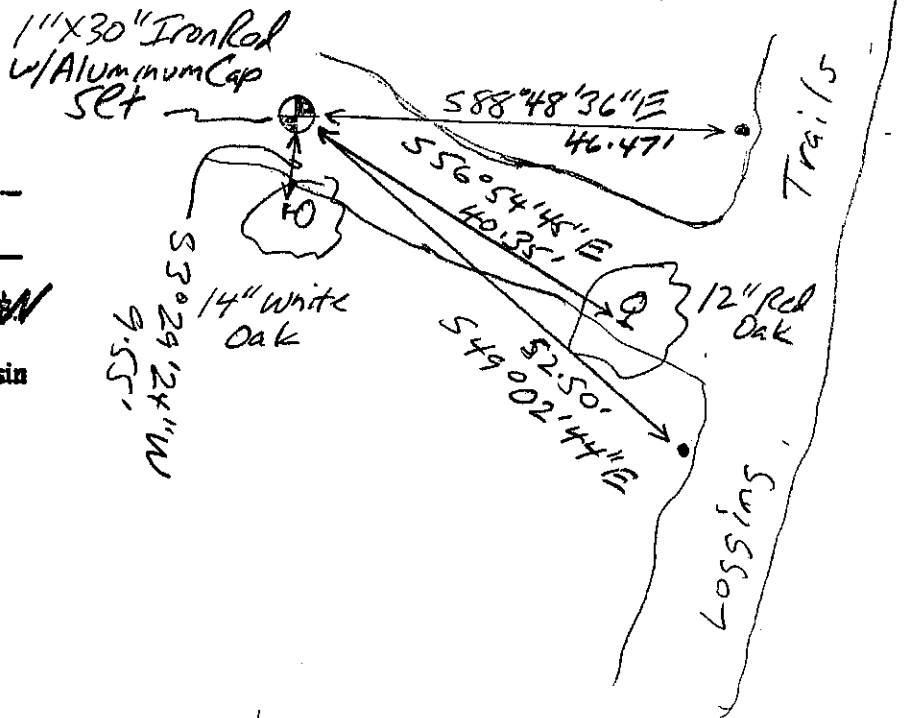
(As Required By s. A-E 7.08, WI Adm. Code)

History of original corner establishment and subsequent restorations and description of any record, monument, occupational, testimonial or other evidence considered: *I found no survey records of this corner since the original government survey. Ownership was soon thereafter acquired around the corner by one land owner and no occupational evidence exists and the bearing trees are long gone. I computed the corner on line between the SE and SW corners at double the distance (1322.62') between the SE corner and occupied 40 corner to the west of it. See section summary sheet for relationships to other corners.*

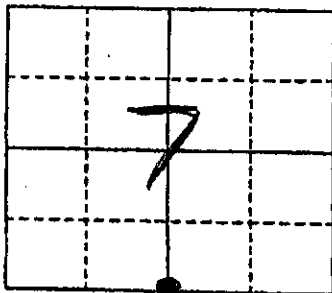
- Corner was: (Check All That Apply)
- Restored through acceptance of an obliterated evidence location
  - Restored through acceptance of a found perpetuated location
  - Considered a lost corner and reestablished through lost corner proportionate methods (include a plan view drawing showing distances and directions to other Public Land Survey Corners used for proportioning and determining the corner location)
  - Restored or reestablished in a location that differs from a previous restoration or reestablishment (include a plan view drawing and indicate what was set and/or found)

Describe the monument and accessories used to perpetuate the location of this corner. (Include a plan view drawing and indicate what was set and/or found)

Grant Co. Coords (N) 611729.04 (E) 865034.57  
 • 1/2" Iron Rod Set  
 (10) Ring Shank Nail Near Base of Tree as Shown



The 5 1/4  
 corner of Section 7  
 T. 7 N., R. 1 W  
Grant County, Wisconsin  
 Job ID: 2003-38  
 Book # 6



● = Location of Corner

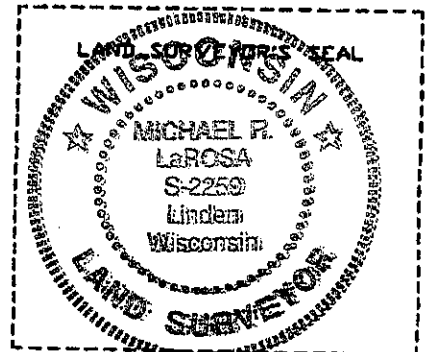
Michael R. LaRosa

Type or print name) certify that the corner location shown on this record was determined by me or under my direction and control and that this U.S. Public Land Survey Monument Record is correct and complete to the best of my knowledge and belief.

Michael R. LaRosa 8/21/2003

Signature

Date



Index No. 52

OCT 16 2003