

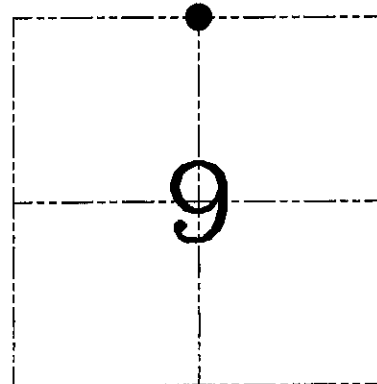
**U.S. PUBLIC LAND SURVEY MONUMENT RECORD – GRANT COUNTY, WI**

**Section 9, Town 7 North Range 1 West, Town of Castle Rock**

CERTIFICATE

I, Larry L. Austin, do hereby certify that the corner location on this record was determined by me and/or under my direct supervision and that this U.S. public land survey monument record is correct and complete to the best of my knowledge and belief.

*Larry L. Austin*  
 Larry L. Austin, S-1903



● = CORNER LOCATION

HISTORY OF CORNER ESTABLISHMENT

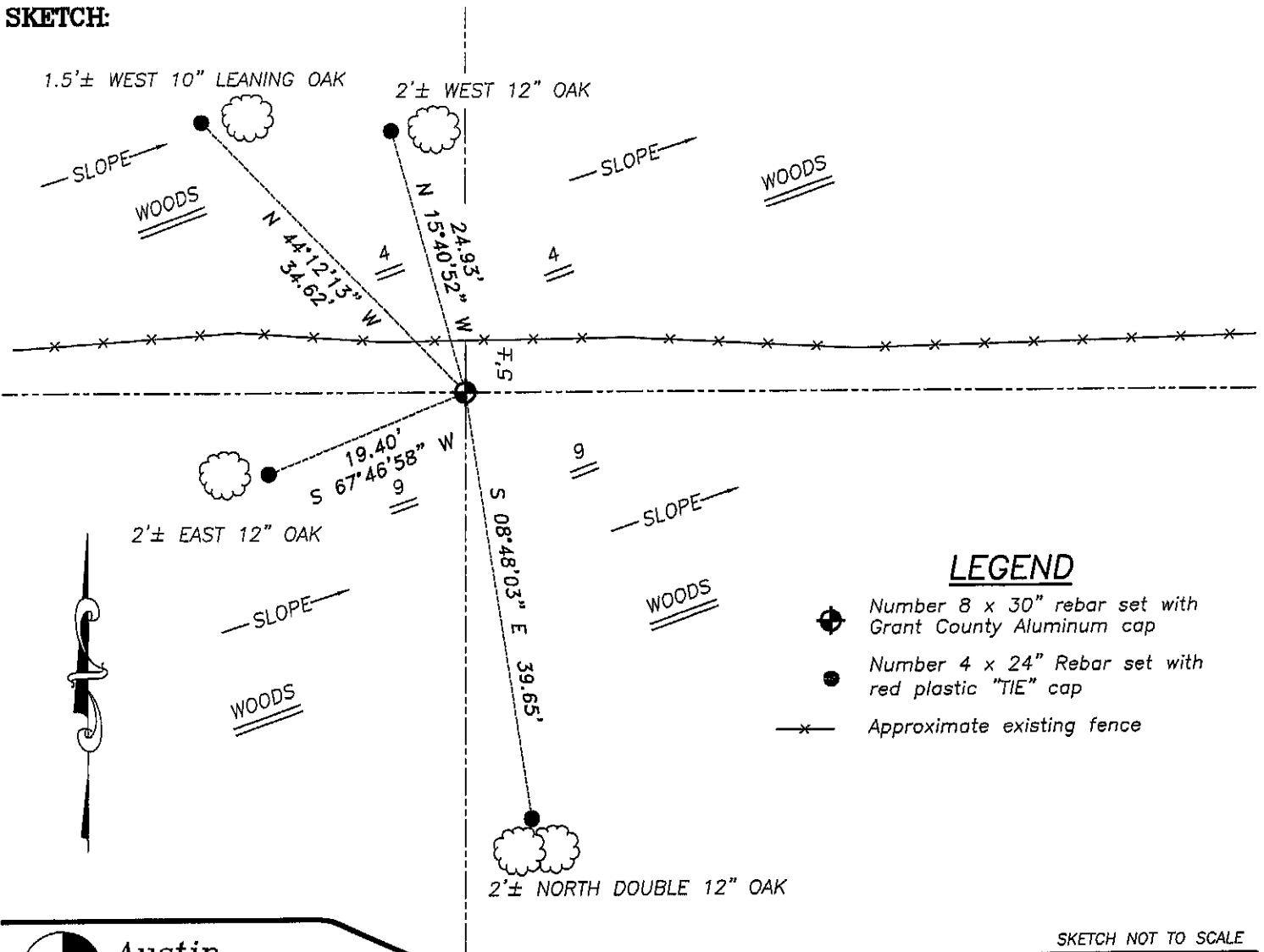
Corner was originally set in 1833 by Sibley. In 1880 Barber tied to the corner with no mention of monument. In 1989 Dalsing showed the corner on a survey plat for Roy Jackson, but apparently no monument was set. No other record of the corner was found.

DESCRIPTION OF CORNER EVIDENCE FOUND

I reset the corner midway and on-line between the Northeast and Northwest corners. This location fit existing occupational and monumented corners within Section 9. Verified this location using EDM & GPS methods.

DESCRIPTION OF CORNER AND WITNESS MONUMENTS, references and accessories used to perpetuate the original or re-established location of this corner. Witnesses to corner location Bobby Sedgwick & Brad Digman & Shelby Blindert

**SKETCH:**



**LEGEND**

- Number 8 x 30" rebar set with Grant County Aluminum cap
- Number 4 x 24" Rebar set with red plastic "TIE" cap
- x- Approximate existing fence



**Austin Engineering LLC**

4211 HWY 81 E, LANCASTER, WI 53813  
 PHONE 608-723-6363 FAX 608-723-6702

JOB NUMBER 07S053  
 FIELDBOOK: TDSR, 2701  
 G:\T8NR1W\33  
 H:\TIE\T7NR1W\28

DRAWN BY: SW AUSTIN  
 APPROVED: LL AUSTIN

SKETCH NOT TO SCALE