

GRANT COUNTY CERTIFIED U.S. PUBLIC LAND SURVEY MONUMENT RECORD

INSTRUCTIONS: THIS RECORD SHALL SHOW THE LOCATION OF THE CORNER AND SHALL INCLUDE ALL OF THE FOLLOWING NINE ELEMENTS (A THROUGH I)

(A) IDENTIFY THE CORNER BY REFERENCE TO THE U.S. PUBLIC LAND SURVEY SYSTEM

■ = CORNER MONUMENT RESTORED

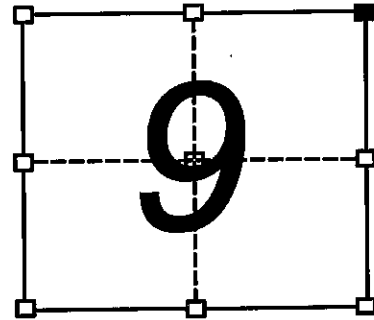
WITNESS TO CORNER LOCATION:

Todd T. Rummler
Terrance M. Prem

GRANT County Coordinates

NORTHING: 617003.55'

EASTING: 878009.40'



SECTION 9, T7N, R1W



(B) DESCRIBE ANY RECORD EVIDENCE, MONUMENT EVIDENCE, OCCUPATIONAL EVIDENCE, TESTIMONIAL EVIDENCE, OR ANY OTHER MATERIAL EVIDENCE YOU CONSIDERED, AND WHETHER THE MONUMENT WAS FOUND OR PLACED.

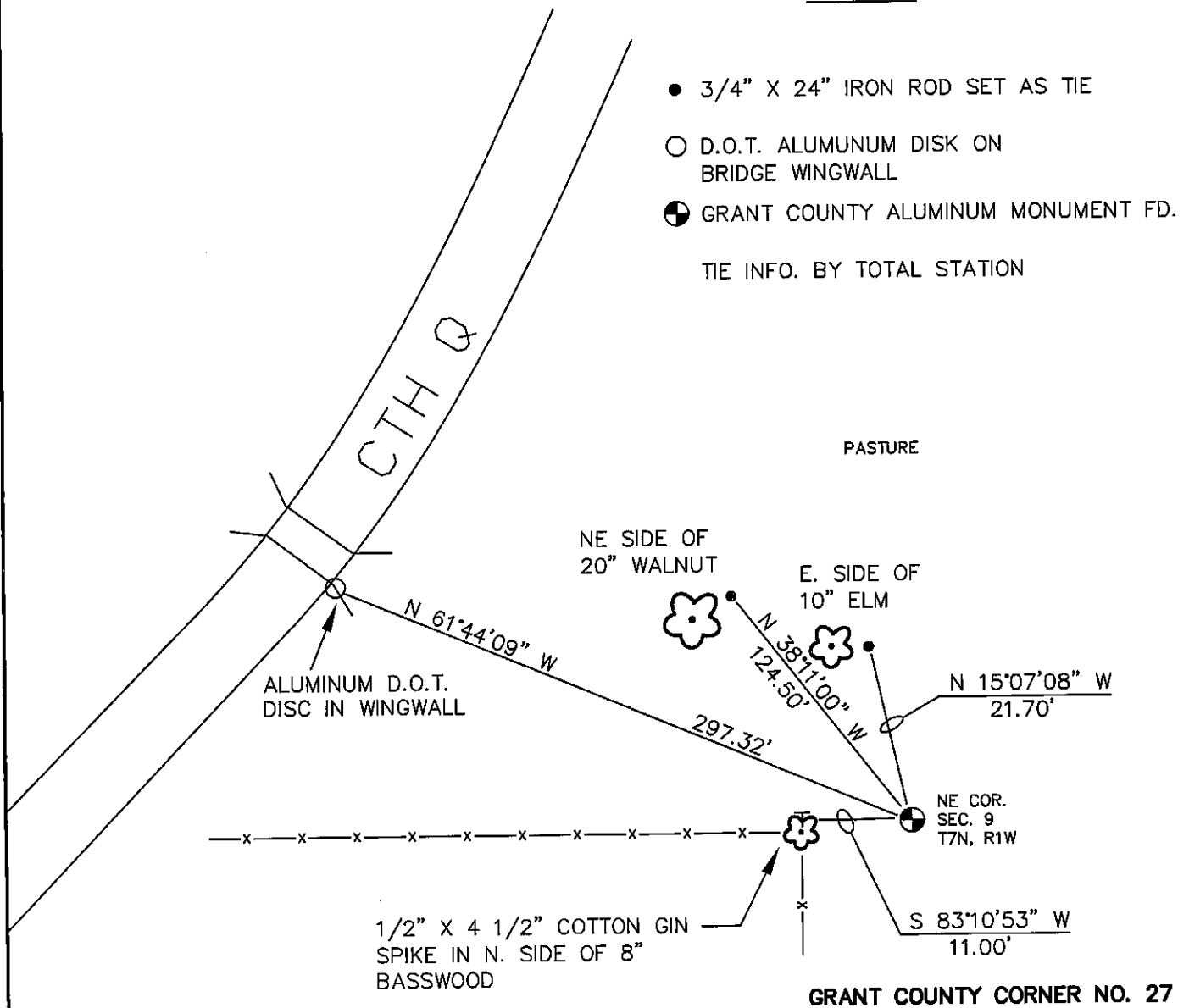
I FOUND AND ACCEPTED THE GRANT COUNTY MONUMENT PLACED BY KEITH DALSING, RLS-1989, IN NOVEMBER 1989. DALSING'S TIES WERE SPIKES IN TREES, SO I SET NEW TIES AS SHOWN

(C) IN THE PLAN VIEW DRAWING BELOW, PROVIDE REFERENCE TIES TO AT LEAST 4 WITNESS MONUMENTS, OR, IF THE LOCATION IS WITHIN A MUNICIPALITY, TO AT LEAST 2 WITNESS MONUMENTS, (WITNESS MONUMENTS SHALL BE MADE OF CONCRETE, NATURAL STONE, IRON OR OTHER EQUALLY DURABLE MATERIAL). DESCRIBE WITNESS MONUMENTS.

(D) SHOW A PLAN VIEW DRAWING DEPICTING THE RELEVANT MONUMENTS AND REFERENCE TIES WHICH IS SUFFICIENT IN DETAIL TO ENABLE ACCURATE RELOCATION OF THE CORNER MONUMENT IF IT IS DISTURBED.

LEGEND

- 3/4" X 24" IRON ROD SET AS TIE
 - D.O.T. ALUMUNUM DISK ON BRIDGE WINGWALL
 - ⊙ GRANT COUNTY ALUMINUM MONUMENT FD.
- TIE INFO. BY TOTAL STATION



(E) DESCRIBE ANY MATERIAL DISCREPANCY BETWEEN THE LOCATION OF THE CORNER AS RESTORED OR REESTABLISHED AND THE LOCATION OF THAT CORNER AS PREVIOUSLY RESTORED OR REESTABLISHED BY DISTANCE AND DIRECTION. SHOW THE DISCREPANCY ON THE PLAN VIEW DRAWING UNDER (D), ABOVE. SHOW THE DISTANCES BETWEEN THE CORNER AS PREVIOUSLY RESTORED OR REESTABLISHED AND (1) THE CORNER AS RESTORED OR REESTABLISHED, AND (2) TO AT LEAST 2 OF THE WITNESS MONUMENTS SHOWN ON THE DRAWING IN (D) ABOVE.

NONE

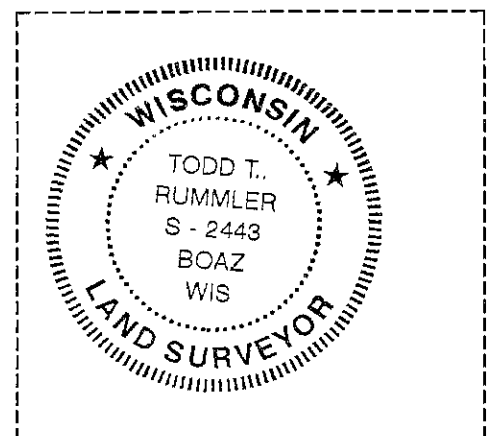
(F) WAS THE CORNER RESTORED THROUGH ACCEPTANCE OF (1) AN OBLITERATED EVIDENCE LOCATION, OR, (2) A FOUND PERPETUATED LOCATION?

2) A FOUND LOCATION, PERPETUATED

(G&H) WAS THE CORNER REESTABLISHED THROUGH LOST CORNER PROPORTIONATE METHODS? IF SO, SHOW THE METHOD, INCLUDING THE DIRECTIONS AND DISTANCES TO OTHER PUBLIC LAND SURVEY CORNERS USED AS EVIDENCE OR USED FOR PROPORTIONING IN DETERMINING THE CORNER LOCATION.

NO

AFFIX LAND SURVEYOR SEAL



(I) I, TODD T. RUMMLER, RLS-2443

CERTIFY THAT THE CORNER LOCATION SHOWN ON THIS RECORD WAS DETERMINED BY ME OR UNDER MY DIRECTION AND CONTROL AND THAT THIS U.S. PUBLIC LAND SURVEY MONUMENT RECORD IS CORRECT AND COMPLETE TO THE BEST OF MY KNOWLEDGE AND BELIEF.


SIGNATURE

10/18/07
DATE

US. PUBLIC LAND SURVEY MONUMENT RECORD

CORNER DESCRIPTION: NE CORNER, SECTION 09, T 7 N, R 1 W

STATE PLANE COORDINATES: N _____, E _____

THETA ANGLE: _____

HORIZONTAL DATUM: WISCONSIN STATE PLANE COORDINATE SYSTEM, SOUTH ZONE

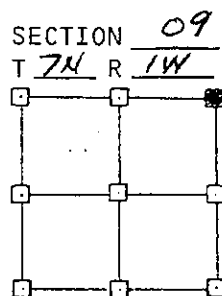
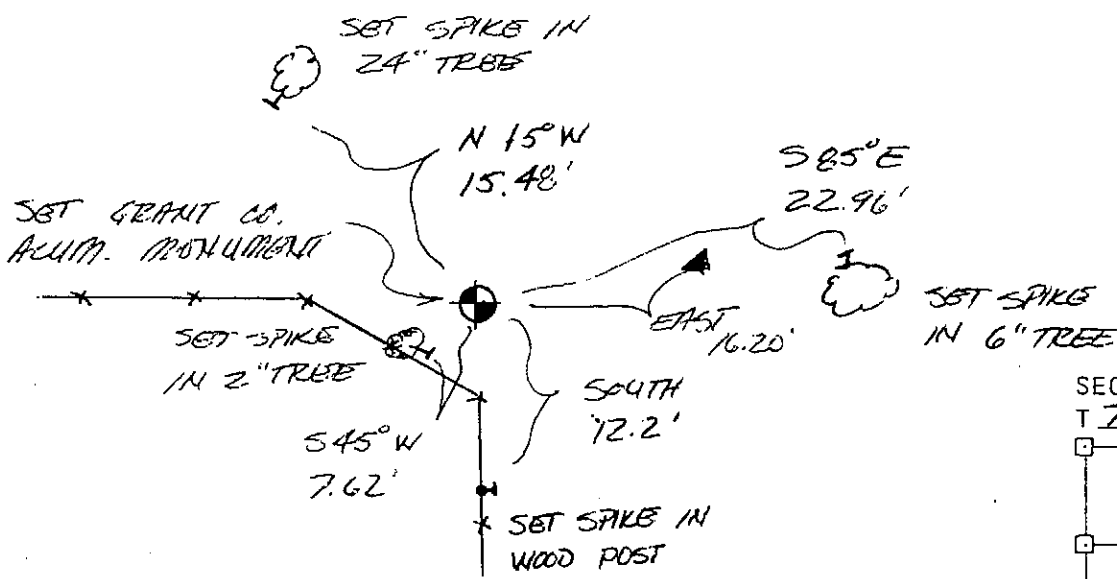
EVIDENCE: EXISTING OCCUPIED CORNER WITH ANCIENT FENCE TO WEST AND SOUTH. MEASURED WITH EDM TRAVERSES OF AREA

MONUMENT: FOUND , PLACED

METHOD OF RESTORATION (RE-ESTABLISHMENT):

ACCEPTED EXISTING MONUMENT
 ACCEPTED OCCUPATION
 LOST CORNER PROPORTIONATE METHODS
 DATE CORNER SET: 4-12-90

- LEGEND**
- ▲ SET #6 REBAR, 1.13 LBS PER LINEAL FT. MIN. WT.
 - SET 1" X 24" IRON PIPE, 1.13 LBS PER LINEAL FT. MIN. WT.
 - SET 2" X 30" IRON PIPE, 3.65 LBS PER LINEAL FT. MIN. WT.
 - FOUND 1" IRON PIPE
 - FOUND 2" IRON PIPE
 - FOUND R/R SPIKE
 - SET R/R SPIKE
 - GOVERNMENT CORNER
 - EXISTING FENCE



NOT TO SCALE THIS CONFORMS TO WISCONSIN ADMINISTRATIVE CODE A-F 5.02

SURVEYOR'S AFFIDAVIT:

STATE OF WISCONSIN)
GRANT COUNTY) SS

I hereby certify that I, KEITH E. DALRING, have complied with the Wisconsin State Statutes, Statutes of the United States, and the rules and regulations made by the Secretary of the Interior in the location of the corner shown above.

DATE OF SURVEY: 11-30-89

Keith E. Dalring
 REGISTERED LAND SURVEYOR
 # 1989



D. F. BURBACH MUNICIPAL & CIVIL ENGINEERS

5992 STATE HIGHWAY 80 SOUTH • P.O. BOX 721 • PLATTEVILLE, WISCONSIN 53818 • (608) 348-3262