

GRANT COUNTY CERTIFIED LAND CORNER

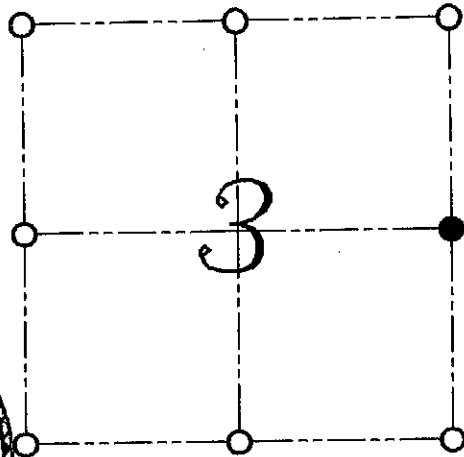
CORNER NUMBER 18

CERTIFICATE:

I, LARRY L. AUSTIN, DO HEREBY CERTIFY THAT ON 25th DAY OF OCTOBER, 1999, I FOUND EVIDENCE OF THE EAST 1/4 CORNER OF SECTION 3, TOWN 7 NORTH, RANGE 1 WEST, OF THE FOURTH PRINCIPAL MERIDIAN, AND I RE-ESTABLISHED SAID CORNER ACCORDING TO THE WISCONSIN STATUTES AS SHOWN AND DESCRIBED HEREON.

DATED THIS 2nd DAY OF NOVEMBER, 1999

Larry L. Austin
LARRY L. AUSTIN S-1903



● = CORNER LOCATION

EAST 1/4 CORNER OF SECTION 3, T 7 N R 1 W TOWN OF CASTLE ROCK

HISTORY OF ORIGINAL CORNER ESTABLISHMENT:

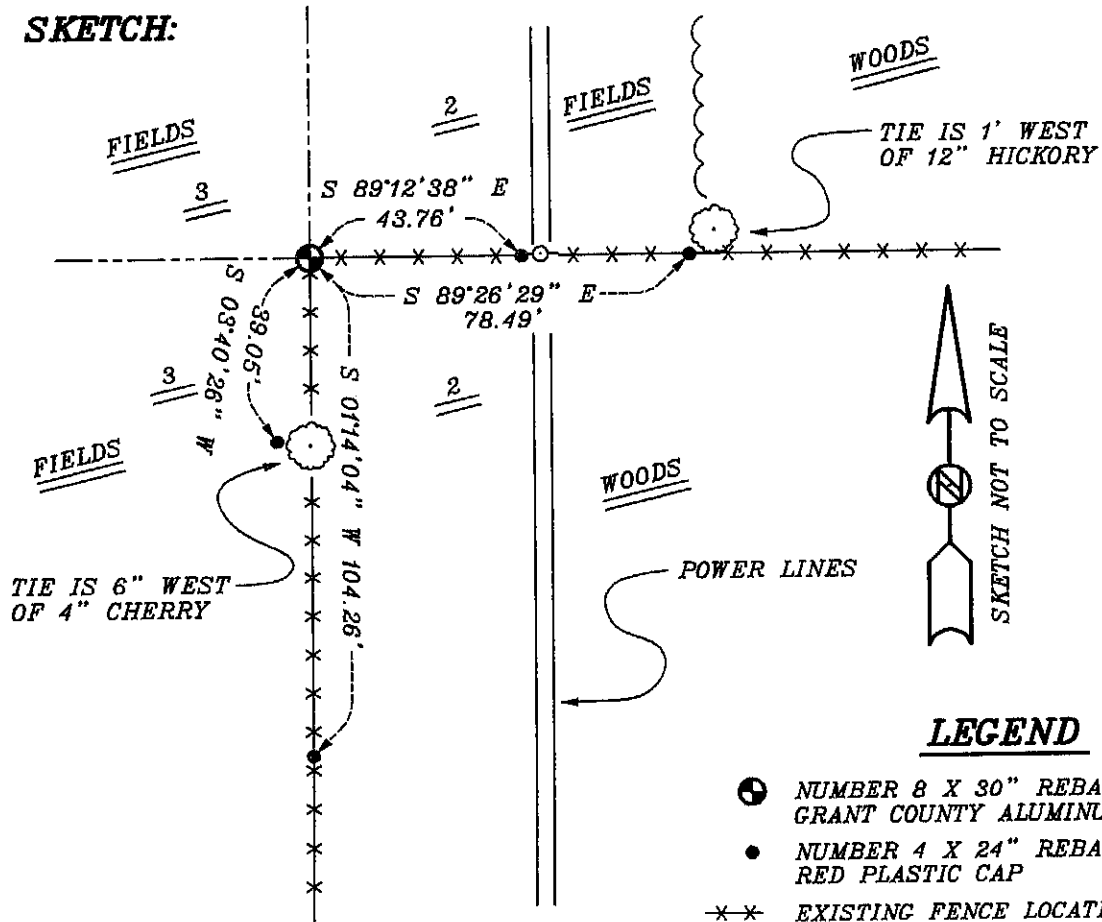
CORNER WAS SET IN 1833 BY SIBLEY.
IN 1880 JOEL BARBER ESTABLISHED NEW BEARING TREES.

DESCRIPTION OF CORNER EVIDENCE FOUND:

I DID NOT FIND THE BEARING TREES DO TO CULTIVATED AREA. I FOUND AND ACCEPTED AN OCCUPIED FENCE CORNER. VERIFIED THIS LOCATION USING E.D.M. AND G.P.S. METHODS.

DESCRIPTION OF CORNER AND WITNESS MONUMENTS, REFERENCES AND ACCESSORIES USED TO PERPETUATE THE ORIGINAL OR RE-ESTABLISHED LOCATION OF THIS CORNER:
WITNESS TO THE CORNER LOCATION: BOBBY SEDGWICK ; SHELBY BLINDERT

SKETCH:



LEGEND

- ⊕ NUMBER 8 X 30" REBAR SET WITH GRANT COUNTY ALUMINUM CAP
- NUMBER 4 X 24" REBAR SET WITH RED PLASTIC CAP
- *-* EXISTING FENCE LOCATION
- ⊙ UTILITY POLE