

# GRANT COUNTY CERTIFIED LAND CORNER

**CERTIFICATE:**

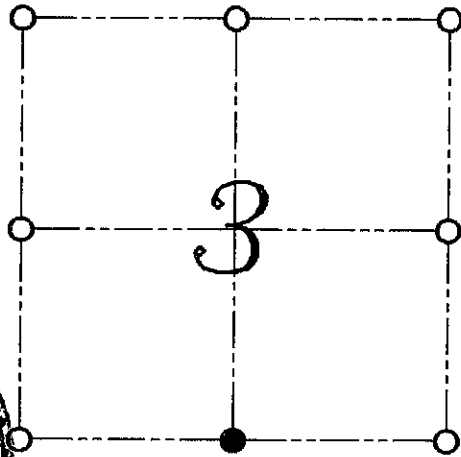
I, LARRY L. AUSTIN, DO HEREBY CERTIFY THAT ON 25th DAY OF OCTOBER, 1999, I FOUND NO EVIDENCE OF THE SOUTH 1/4 CORNER OF SECTION 3, TOWN 7 NORTH, RANGE 1 WEST, OF THE FOURTH PRINCIPAL MERIDIAN, AND I RE-ESTABLISHED SAID CORNER ACCORDING TO THE WISCONSIN STATUTES AS SHOWN AND DESCRIBED HEREON.

DATED THIS 2nd DAY OF NOVEMBER, 1999

*Larry L. Austin*  
LARRY L. AUSTIN S-1903



CORNER NUMBER 26



● = CORNER LOCATION

SOUTH 1/4 CORNER OF SECTION 3, T 7 N R 1 W TOWN OF CASTLE ROCK

**HISTORY OF ORIGINAL CORNER ESTABLISHMENT:**

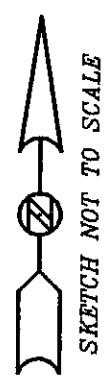
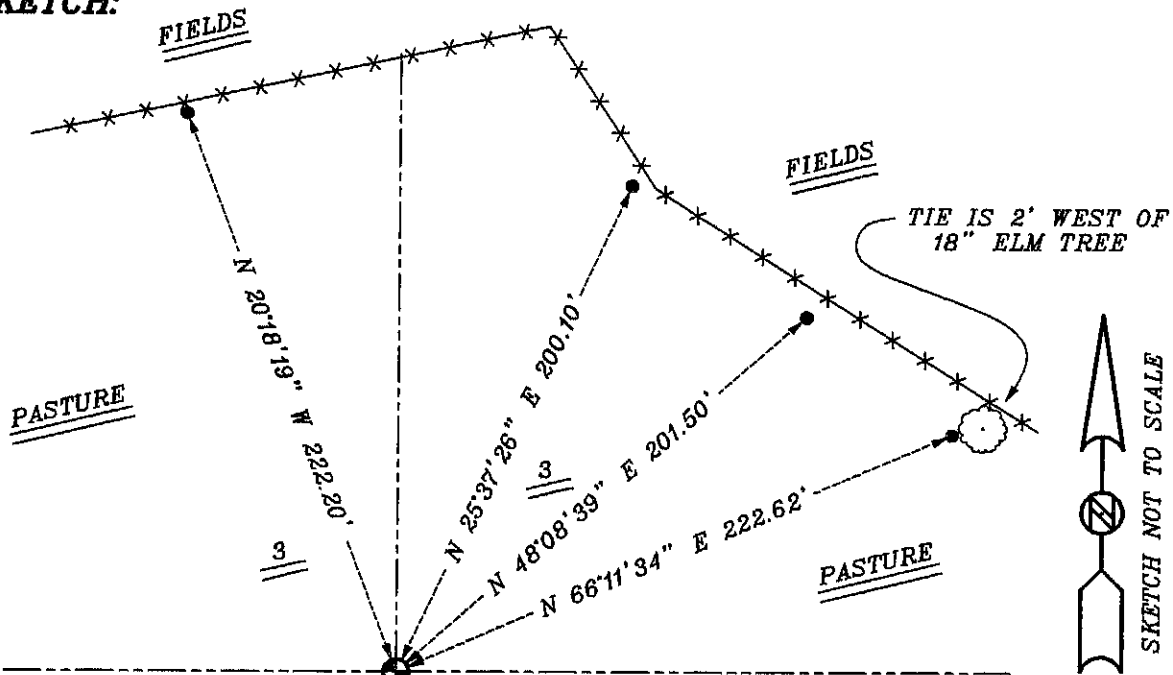
CORNER WAS SET IN 1833 BY SIBLEY.  
IN 1880 JOEL BARBER SET NEW BEARING TREES.

**DESCRIPTION OF CORNER EVIDENCE FOUND:**

I WAS UNABLE TO LOCATE THE NEW BEARING TREES. I RESET THE CORNER BASED ON PROPORTIONATE METHODS. VERIFIED THIS LOCATION USING E.D.M. AND G.P.S. METHODS.

DESCRIPTION OF CORNER AND WITNESS MONUMENTS, REFERENCES AND ACCESSORIES USED TO PERPETUATE THE ORIGINAL OR RE-ESTABLISHED LOCATION OF THIS CORNER:  
WITNESS TO THE CORNER LOCATION: BOBBY SEDGWICK ; SHELBY BLINDERT

**SKETCH:**



SKETCH NOT TO SCALE

**LEGEND**

- ⊕ NUMBER 8 X 30" REBAR SET WITH GRANT COUNTY ALUMINUM CAP
- NUMBER 4 X 24" REBAR SET WITH RED PLASTIC CAP
- \*\*-\*\* EXISTING FENCE LOCATION