

E 1/4 Corner of 1, T7N, R1W
 Castle Rock TWP., Grant Co.

U.S. PUBLIC LAND SURVEY MONUMENT RECORD

(As Required By s. A-E 7.08, WI Adm. Code)

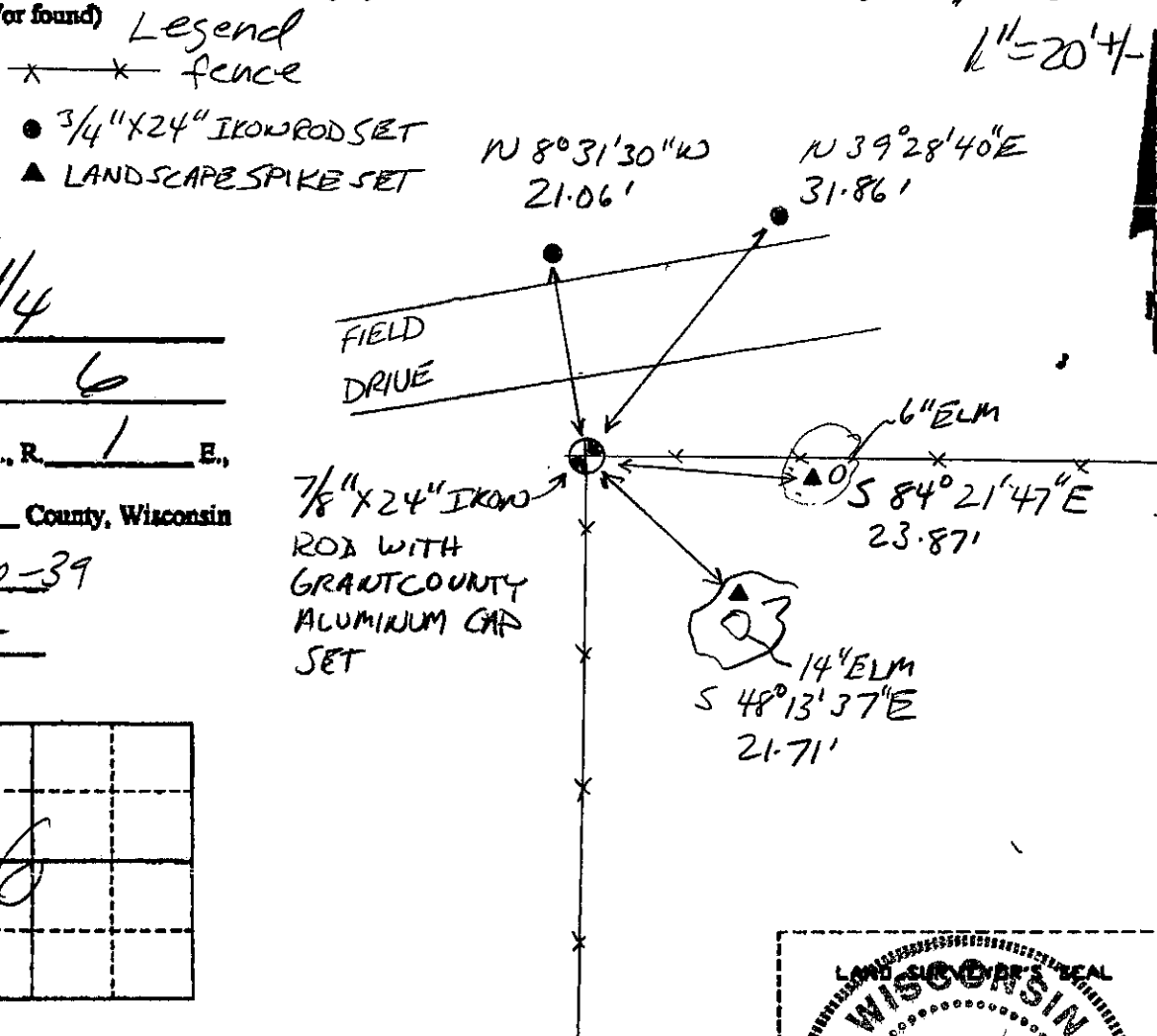
History of original corner establishment and subsequent restorations and description of any record, monument, occupational, testimonial or other evidence considered:

Corner was noted in original government survey notes dated Jan. 9th 1833. I found no other official records. John Halverson visited the corner during a 1979 survey in section 31, T8N, R1E. The occupied location of fences east and south was accepted and monumented after it fit well with corners north and south.

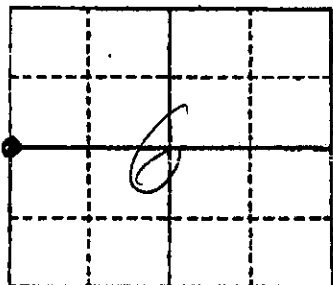
Corner was: (Check All That Apply)

- Restored through acceptance of an obliterated evidence location
- Restored through acceptance of a found perpetuated location
- Considered a lost corner and reestablished through lost corner proportionate methods (include a plan view drawing showing distances and directions to other Public Land Survey Corners used for proportioning and determining the corner location)
- Restored or reestablished in a location that differs from a previous restoration or reestablishment (include a plan view drawing and indicate what was set and /or found)

Describe the monument and accessories used to perpetuate the location of this corner. (Include a plan view drawing and indicate what was set and/or found)



The W 1/4
 corner of Section 6
 T. 7 N., R. 1 E.,
IOWA County, Wisconsin
 Job ID: 2000-39
 Book # 2



● = Location of Corner

Michael R. LaRosa

I, Michael R. LaRosa certify that the corner location shown on this record was determined by me or under my direction and control and that this U.S. Public Land Survey Monument Record is correct and complete to the best of my knowledge and belief.

Michael R. LaRosa 8/4/2000

Signature

Date



Index No. 20