

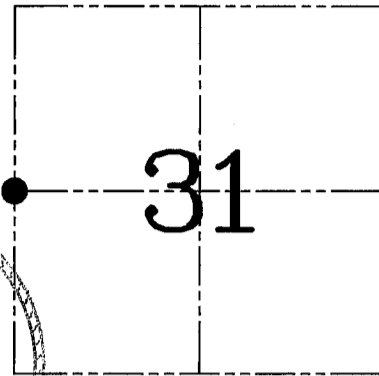
U.S. PUBLIC LAND SURVEY MONUMENT RECORD – GRANT COUNTY, WI

Section 31, Town 6 North Range 5 West, Town of Patch Grove

CERTIFICATE

I, Larry L. Austin, do hereby certify that the corner location on this record was determined by me and/or under my direct supervision and that this U.S. public land survey monument record is correct and complete to the best of my knowledge and belief.

Larry L. Austin 2.23.07
 Larry L. Austin, S-1903 date



● = CORNER LOCATION

HISTORY OF CORNER ESTABLISHMENT

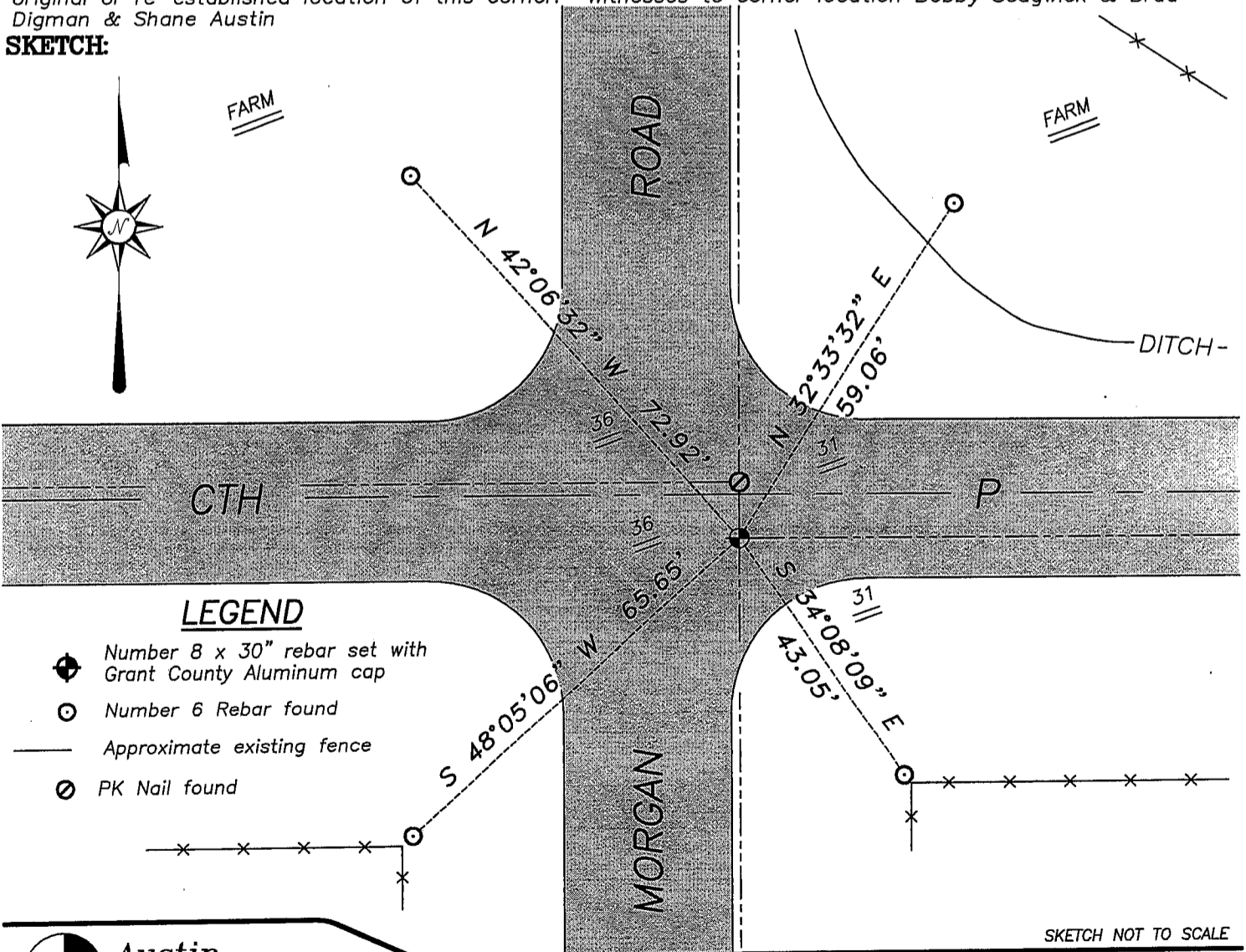
Corner was never originally set. In 1875 Barber tied to the corner with no mention of monument. No other record of the corner was found.

DESCRIPTION OF CORNER EVIDENCE FOUND

I reset the corner at the proportioned offset from the existing East 1/4 of Section 36, T6N R6W. Verified this location using EDM & GPS methods.

DESCRIPTION OF CORNER AND WITNESS MONUMENTS, references and accessories used to perpetuate the original or re-established location of this corner. Witnesses to corner location Bobby Sedgwick & Brad Digman & Shane Austin

SKETCH:



LEGEND

- ⊕ Number 8 x 30" rebar set with Grant County Aluminum cap
- Number 6 Rebar found
- Approximate existing fence
- ⊙ PK Nail found

SKETCH NOT TO SCALE



Austin Engineering LLC

4211 HWY 81 E, LANCASTER, WI 53813
 PHONE 608-723-6363 FAX 608-723-6702

JOB NUMBER 06S159
 FIELDBOOK: TDSR, 2603
 G:\T5NR6W\01
 H:\TIE\T6NR5W\114

DRAWN BY: SW AUSTIN
 APPROVED: LL AUSTIN

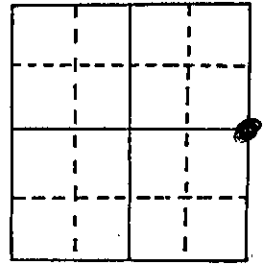
MAR 1 1996

U.S. PUBLIC LAND SURVEY MONUMENT RECORD

Note: This form is intended and designed to fulfill all requirements of Wisconsin Administrative Code, Chapter A-E 5.02, U.S. Public Land Survey Monument Record (3) (a) (b) (c) (d) (e) (f) (g) (h) (i). An additional sheet may be added if necessary to conform with said requirements.

(a) Corner location: Township 6 North
Range 6 East/West

Town/City/Village Wyalusing
County Frank



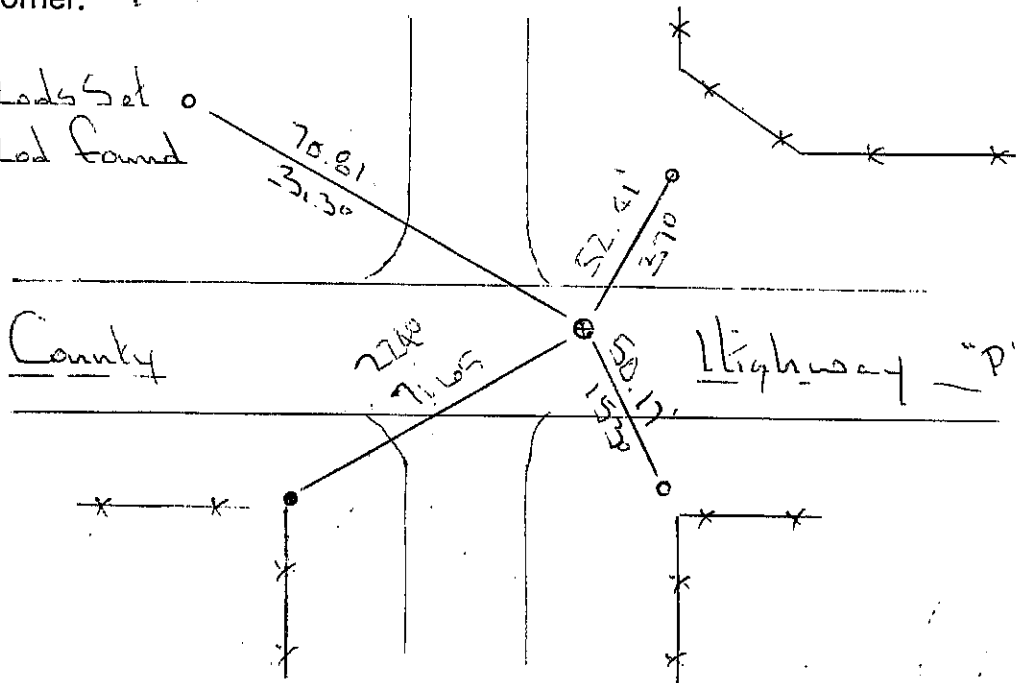
Section 36

(b) (f) (g) (h) Description of monument found at this corner and if it was accepted, state all evidence (material, testimonial, occupational, plats, records, other monuments) used as a basis for accepting. If not accepted or if nothing was found, state evidence used as basis for establishing location. If reestablished through lost corner proportionate methods, indicate all monuments, distances and directions used to establish.

I set this corner to fit existing occupied forty lines West and South P.k. Mail set at corner.

(c) (d) (e) Plan view of corner with ties to at least 4 witness monuments. If in disagreement with previously established corner, show the distances between the two corners and also indicate the ties to the disputed corner.

- 3/4" Iron Rods Set
- 3/4" Iron Rod found



I, Richard Shanks
(type or print name) certify that the corner location on this record was determined by me or under my direction and control and that this U.S. Public Land Survey Monument Record is correct and complete to the best of my knowledge and belief.

Affix seal here

[Signature]
Signature Date 2/28/96