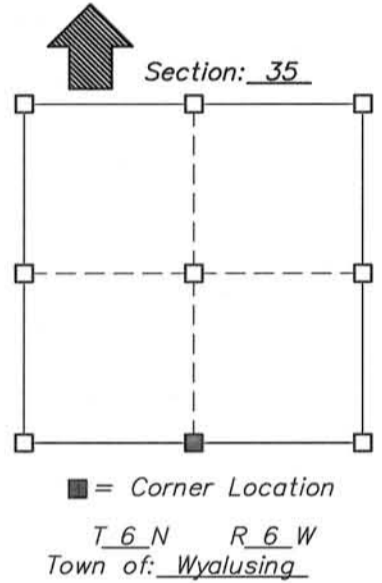


U.S. PUBLIC LAND SURVEY MONUMENT RECORD - GRANT COUNTY, WI

I William R. Bulawa, do hereby certify that on the 7th day of February, 2012, found no evidence of the South Quarter Corner of Section 35, T6N, R6W, Fourth Principal Meridian, and I re-established said corner according to the Wisconsin Statutes as shown and described hereon. The U.S. public land survey monument record is correct and complete to the best of my knowledge and belief.

Dated this 7th day of February, 2012

William R. Bulawa
 William R. Bulawa, R.L.S. No. S-2167



Seal

History of original corner establishment:

Original corner set by Robert Clark in 1832. .

Description of corner evidence found:

Did not find any evidence of original corner. Corner falls in large cultivated field. Set corner by proportional measurements between the SE corner of Section 36, and the SW corner of Section 35. as shown on Sheet 2 of 2.

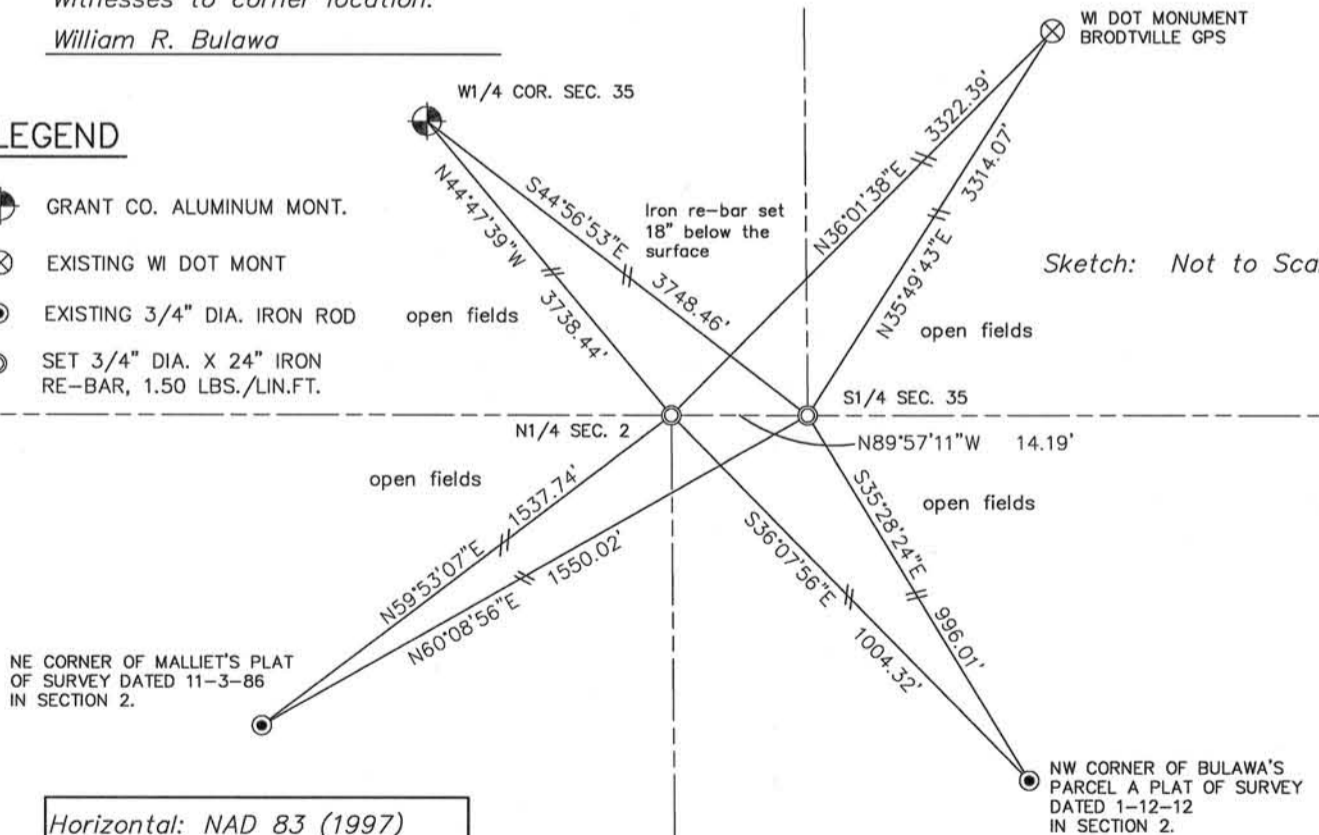
Description of corner and witness monuments, references and accessories used to perpetrate the original or re-established location of this corner:

Witnesses to corner location:

William R. Bulawa

LEGEND

- ⊙ GRANT CO. ALUMINUM MONT.
- ⊗ EXISTING WI DOT MONT
- EXISTING 3/4" DIA. IRON ROD
- ⊙ SET 3/4" DIA. X 24" IRON RE-BAR, 1.50 LBS./LIN.FT.



Horizontal: NAD 83 (1997)

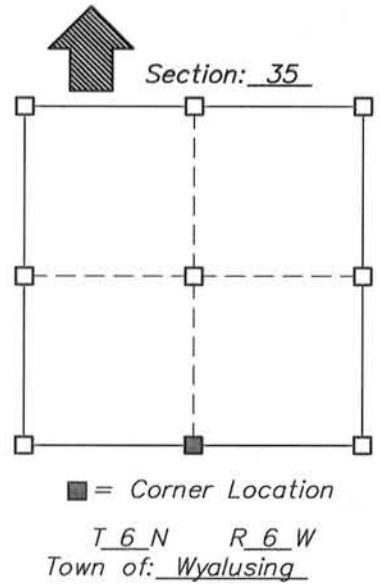
Corner	North (Y)	East (X)	Elevation (Z)	Zone
Grant Co. Coord.				

U.S. PUBLIC LAND SURVEY MONUMENT RECORD - GRANT COUNTY, WI

I William R. Bulawa, do hereby certify that on the 7th day of February, 2012, found no evidence of the South Quarter Corner of Section 35, T6N, R6W, Fourth Principal Meridian, and I re-established said corner according to the Wisconsin Statutes as shown and described hereon. The U.S. public land survey monument record is correct and complete to the best of my knowledge and belief.

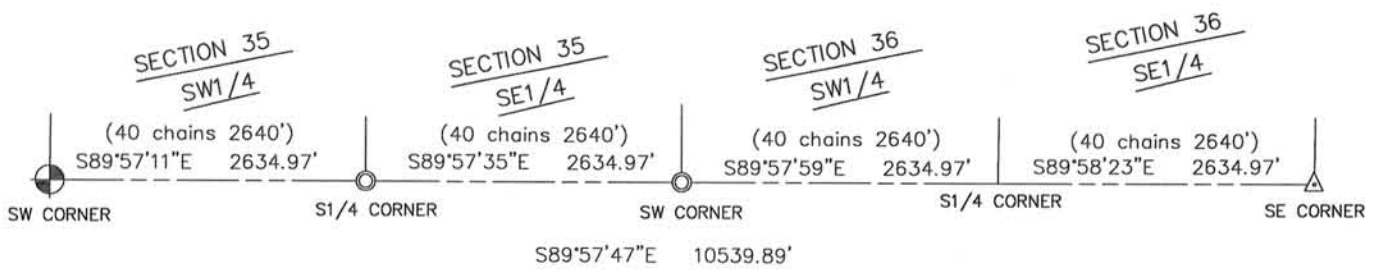
Dated this 7th day of February, 2012

William R. Bulawa
 William R. Bulawa, R.L.S. No. S-2167



Seal

Convergence of range lines at approx 42°50' N latitude is 0°04'50"
 So deflection of standard parallel is 0°0'24" per 1/2 mile.
 Deflected line between SW 35 and SE 36



LEGEND

- ⊙ SET 3/4" DIA. X 24" IRON RE-BAR, 1.50 LBS./LIN.FT.
- ⊗ GRANT CO. ALUMINUM MONT.
- △ COMPUTED FROM OLD TIES SEE GRANT CO. TIE SHEET.

Horizontal: NAD 83 (1997)

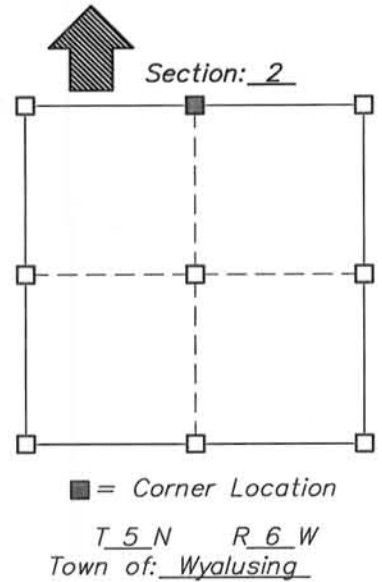
Corner	North (Y)	East (X)	Elevation (Z)	Zone
Grant Co. Coord.				

U.S. PUBLIC LAND SURVEY MONUMENT RECORD - GRANT COUNTY, WI

I William R. Bulawa, do hereby certify that on the 7th day of February, 2012, found no evidence of the North Quarter Corner of Section 2, T5N, R6W, Fourth Principal Meridian, and I re-established said corner according to the Wisconsin Statutes as shown and described hereon. The U.S. public land survey monument record is correct and complete to the best of my knowledge and belief.

Dated this 7th day of February, 2012

William R. Bulawa
 William R. Bulawa, R.L.S. No. S-2167



Seal

History of original corner establishment:

Original corner set by Robert Clark in 1832. .

Description of corner evidence found:

Did not find any evidence of corner. Corner falls in large cultivated field. Set corner at record closing distance from the S1/4 corner of Section 35 as shown on Sheet 2 of 2..

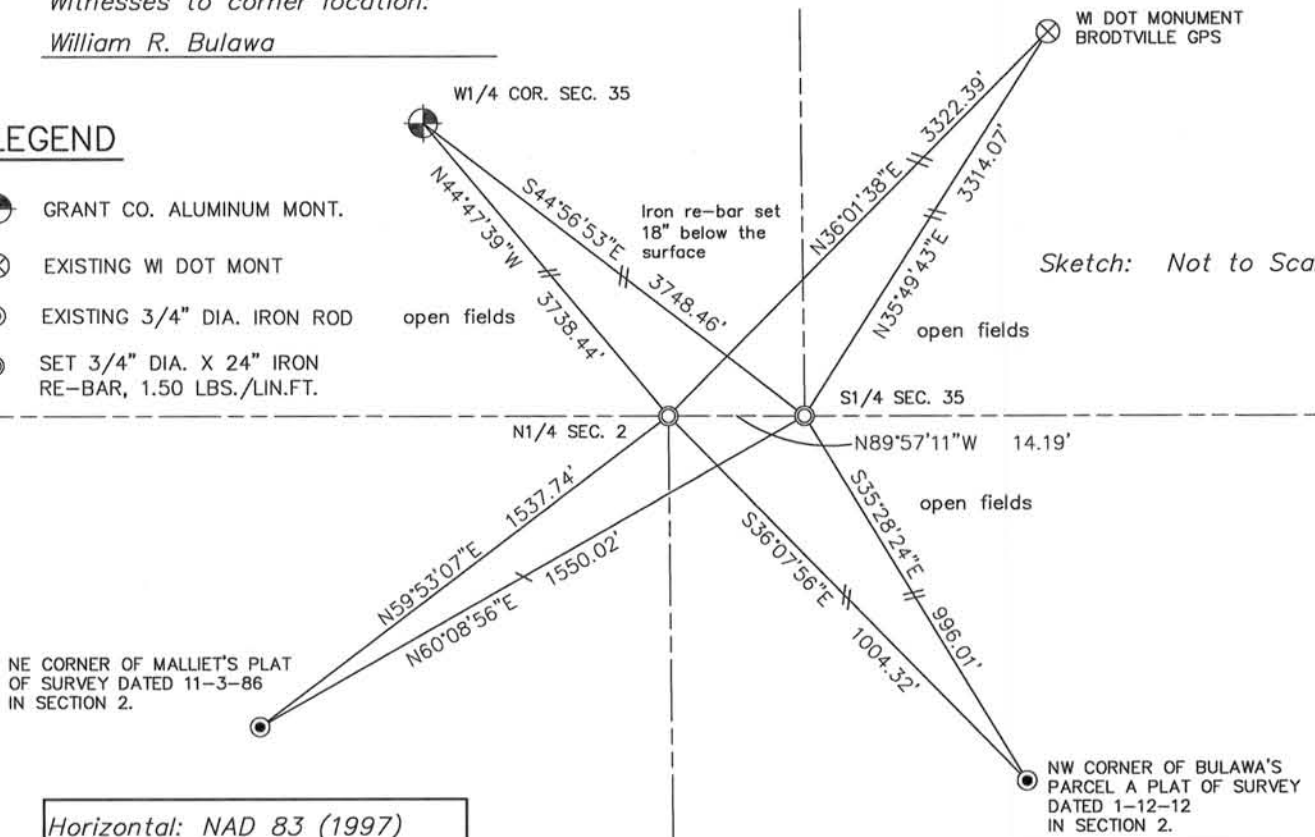
Description of corner and witness monuments, references and accessories used to perpetrate the original or re-established location of this corner:

Witnesses to corner location:

William R. Bulawa

LEGEND

- ⊙ GRANT CO. ALUMINUM MONT.
- ⊗ EXISTING WI DOT MONT
- EXISTING 3/4" DIA. IRON ROD
- ⊙ SET 3/4" DIA. X 24" IRON RE-BAR, 1.50 LBS./LIN.FT.



Horizontal: NAD 83 (1997)

Corner	North (Y)	East (X)	Elevation (Z)	Zone
Grant Co. Coord.				

FEB 9 6 2012

U.S. PUBLIC LAND SURVEY MONUMENT RECORD - GRANT COUNTY, WI

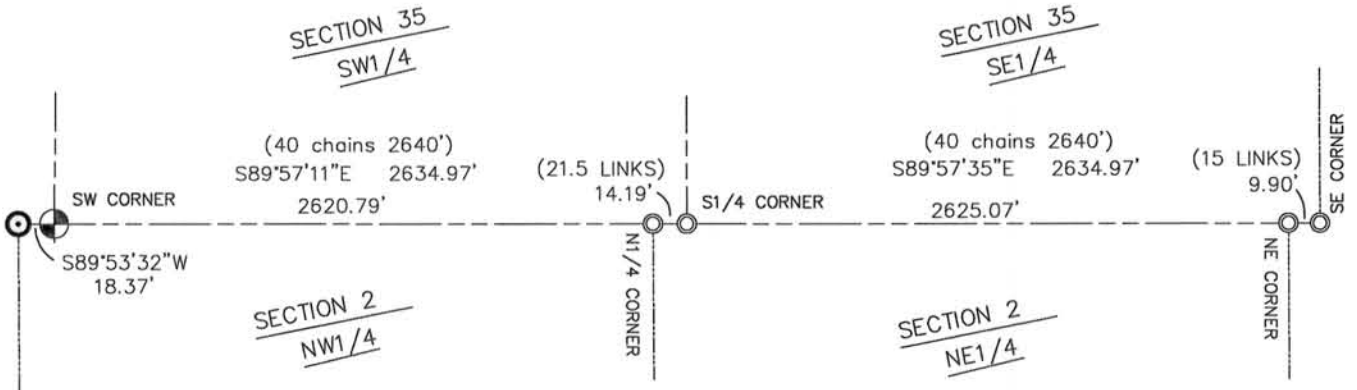
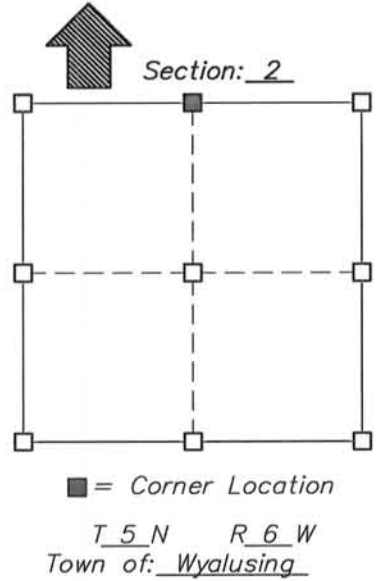
I William R. Bulawa, do hereby certify that on the 7th day of February, 2012, found no evidence of the North Quarter Corner of Section 2, T5N, R6W, Fourth Principal Meridian, and I re-established said corner according to the Wisconsin Statutes as shown and described hereon. The U.S. public land survey monument record is correct and complete to the best of my knowledge and belief.

Dated this 7th day of February, 2012

William R. Bulawa
 William R. Bulawa, R.L.S. No. S-2167



Seal



LEGEND

- ⊙ SET 3/4" DIA. X 24" IRON RE-BAR, 1.50 LBS./LIN.FT.
- ⊕ GRANT CO. ALUMINUM MONT.
- ⊙ EXISTING 2" DIA. IRON PIPE

Horizontal: NAD 83 (1997)

Corner	North (Y)	East (X)	Elevation (Z)	Zone
Grant Co. Coord.				