

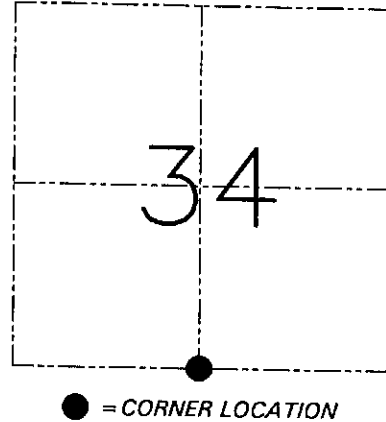
**U.S. PUBLIC LAND SURVEY MONUMENT RECORD - GRANT COUNTY, WI**  
 Section 34, Town 6 North Range 6 West, Town of Wyalusing

**CERTIFICATE**

I, Larry L. Austin, do hereby certify that the corner location on this record was determined by me and/or under my direct supervision and that this U.S. public land survey monument record is correct and complete to the best of my knowledge and belief.

Dated this 18th day of September, 2001

*Larry L. Austin*  
 Larry L. Austin S-1903



**HISTORY OF CORNER ESTABLISHMENT**

Corner was originally set in 1832 by Sibley.  
 No other record of the corner was found.

**DESCRIPTION OF CORNER EVIDENCE FOUND**

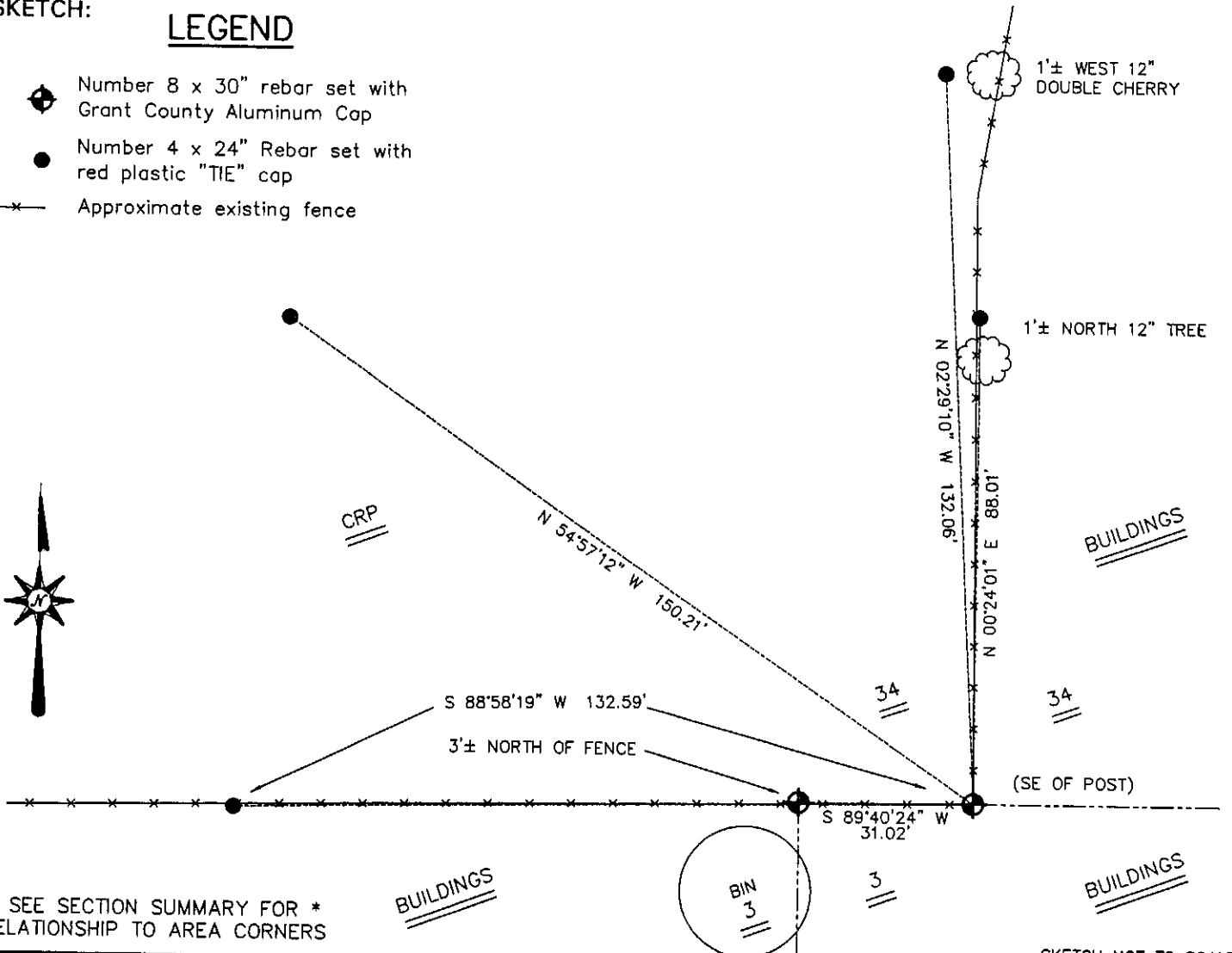
I reset the corner at an occupied location.  
 I verified this location using EDM & GPS methods.

**DESCRIPTION OF CORNER AND WITNESS MONUMENTS, references and accessories used to perpetuate the original or re-established location of this corner. Witnesses to the corner location Bobby Sedgwick & Shane Austin & Tim Fauver**

SKETCH:

**LEGEND**

- ◆ Number 8 x 30" rebar set with Grant County Aluminum Cap
- Number 4 x 24" Rebar set with red plastic "TIE" cap
- x— Approximate existing fence



\* SEE SECTION SUMMARY FOR \*  
 RELATIONSHIP TO AREA CORNERS

SKETCH NOT TO SCALE

**AUSTIN ENGINEERING, LLC**  
 4211 HWY 81 EAST, LANCASTER, WI 53813  
 PHONE 608-723-6363 FAX 608-723-6702

FIELDBOOK: SDR33, 2042  
 G: \T6NR6W\33A  
 C: \SWA\TIE\T5NR6W\03  
 CREW: BS-SB-SA-TF

DRAWN BY: SW AUSTIN  
 APPROVED: LL AUSTIN

**CORNER NUMBER 126**

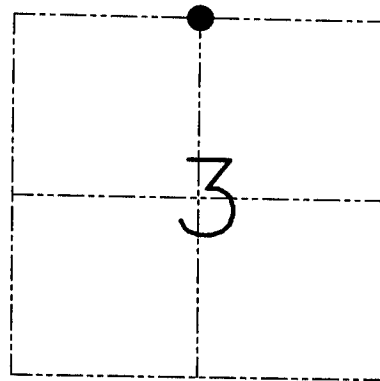
**U.S. PUBLIC LAND SURVEY MONUMENT RECORD - GRANT COUNTY, WI**  
 Section 3, Town 5 North Range 6 West, Town of Wyalusing

**CERTIFICATE**

I, Larry L. Austin, do hereby certify that the corner location on this record was determined by me and/or under my direct supervision and that this U.S. public land survey monument record is correct and complete to the best of my knowledge and belief.

Dated this 18th day of September 2006

*Larry L. Austin*  
 Larry L. Austin S-1903



● = CORNER LOCATION

**HISTORY OF CORNER ESTABLISHMENT**

Corner was never originally set.

**DESCRIPTION OF CORNER EVIDENCE FOUND**

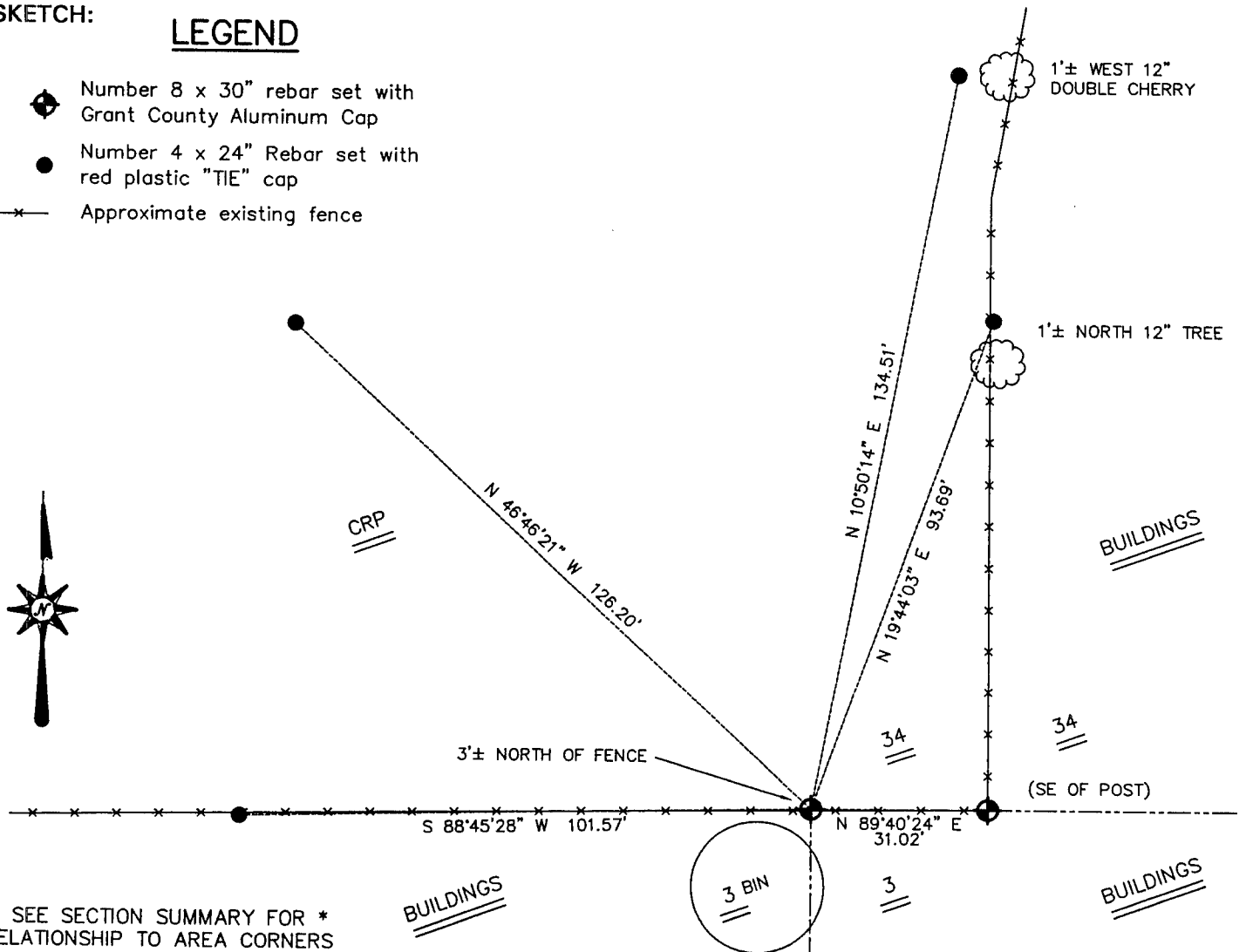
I reset the corner at the proportioned offset from the South 1/4 of Section 34. Verified this location using EDM & GPS methods.

**DESCRIPTION OF CORNER AND WITNESS MONUMENTS, references and accessories used to perpetuate the original or re-established location of this corner.** Witnesses to the corner location Bobby Sedgwick & Shane Austin & Tim Fauver

SKETCH:

**LEGEND**

- ◆ Number 8 x 30" rebar set with Grant County Aluminum Cap
- Number 4 x 24" Rebar set with red plastic "TIE" cap
- \*— Approximate existing fence



\* SEE SECTION SUMMARY FOR \*  
 RELATIONSHIP TO AREA CORNERS

SKETCH NOT TO SCALE

**AUSTIN ENGINEERING, LLC**

4211 HWY 81 EAST, LANCASTER, WI 53813  
 PHONE 608-723-6363 FAX 608-723-6702

FIELDBOOK: SDR33, 2042  
 G: \T6NR6W\33A  
 C: \SWA\TIE\T5NR6W\03  
 CREW: BS-SB-SA-TF

DRAWN BY: SW AUSTIN  
 APPROVED: LL AUSTIN

**CORNER NUMBER 06**