

**U.S. PUBLIC LAND SURVEY MONUMENT RECORD - GRANT COUNTY, WI**

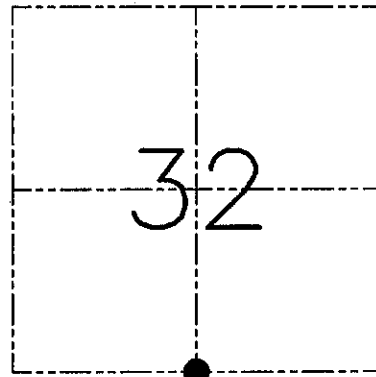
Section 32, Town 6 North Range 6 West, Town of Wyalusing

**CERTIFICATE**

I, Larry L. Austin, do hereby certify that the corner location on this record was determined by me and/or under my direct supervision and that this U.S. public land survey monument record is correct and complete to the best of my knowledge and belief.

Dated this 3rd day of May, 2001

*Larry L. Austin*  
Larry L. Austin S-1903



● = CORNER LOCATION

**HISTORY OF CORNER ESTABLISHMENT**

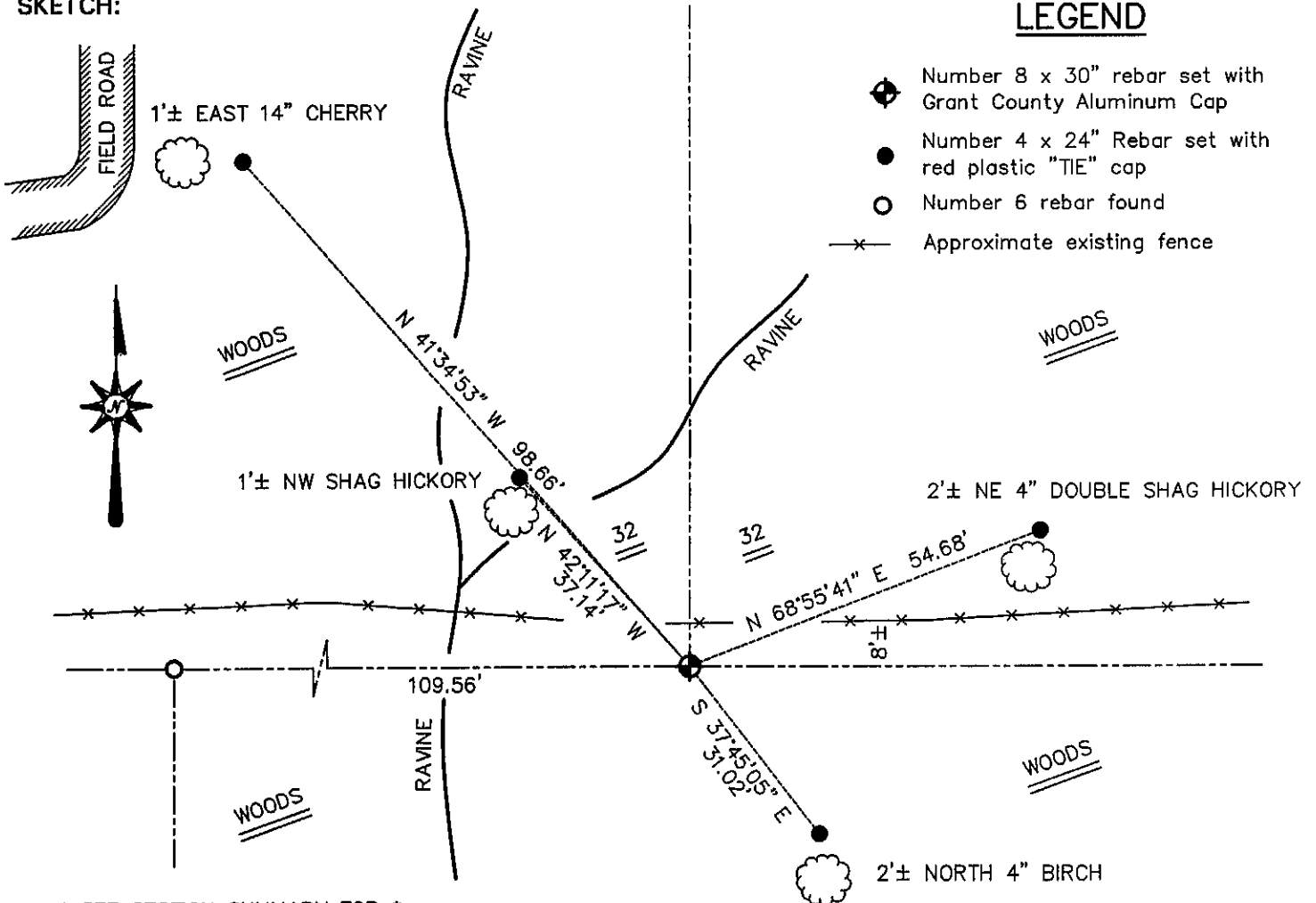
Corner was originally set in 1832 by Sibley.  
In 1991 Richard Marks set the North 1/4 of Section 5.

**DESCRIPTION OF CORNER EVIDENCE FOUND**

I found the North 1/4 of Section 5 and set the South 1/4 of Section 32 at the proportioned offset. Verified this location using EDM & GPS methods.

**DESCRIPTION OF CORNER AND WITNESS MONUMENTS, references and accessories used to perpetuate the original or re-established location of this corner. Witnesses to the corner location Bobby Sedgwick & Shane Austin & Tim Fauver.**

**SKETCH:**



**LEGEND**

- ◆ Number 8 x 30" rebar set with Grant County Aluminum Cap
- Number 4 x 24" Rebar set with red plastic "TIE" cap
- Number 6 rebar found
- x- Approximate existing fence

\* SEE SECTION SUMMARY FOR \*  
RELATIONSHIP TO AREA CORNERS

SKETCH NOT TO SCALE

**AUSTIN ENGINEERING, LLC**

4211 HWY 81 EAST, LANCASTER, WI 53813  
PHONE 608-723-6363 FAX 608-723-6702

FIELDBOOK: SDR33, 2042  
G:\T6NR6W\33  
G:\SWA\TIE\T6NR6W\130  
CREW: BS-SB-SA-TF

DRAWN BY: SW AUSTIN  
APPROVED: LL AUSTIN

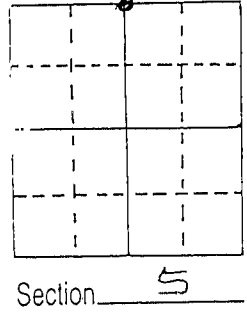
**CORNER NUMBER 130**

# U.S. PUBLIC LAND SURVEY MONUMENT RECORD

JUL 22 1991

Note: This form is intended and designed to fulfill all requirements of Wisconsin Administrative Code, Chapter A-E 5.02, U.S. Public Land Survey Monument Record (3) (a) (b) (c) (d) (e) (f) (g) (h) (i). An additional sheet may be added if necessary to conform with said requirements.

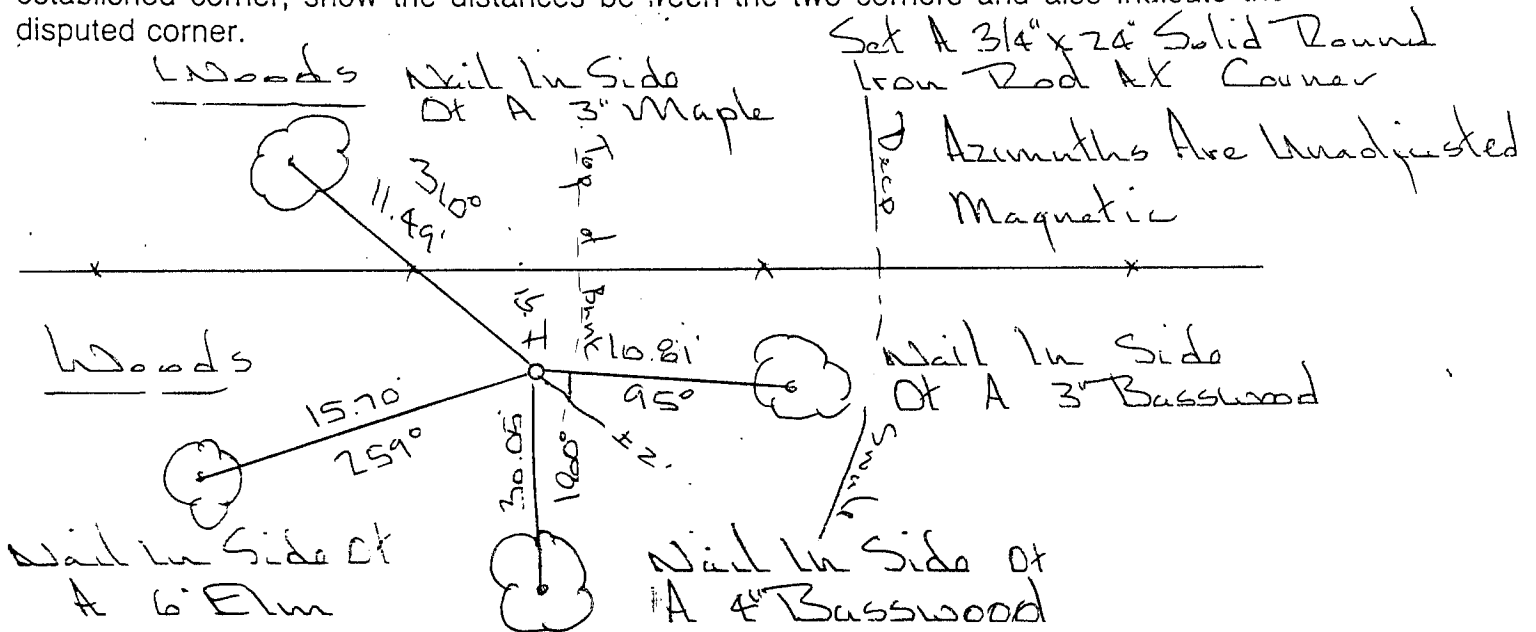
(a) Corner location: Township 5 North  
 Range 6 East/West  
 Town/City/Village Wyalusing  
 County Grant



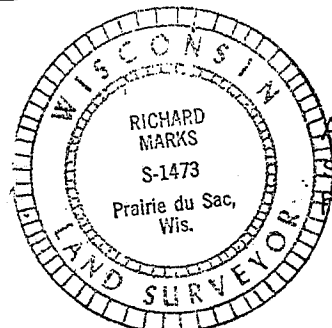
(b) (f) (g) (h) Description of monument found at this corner and if it was accepted, state all evidence (material, testimonial, occupational, plats, records, other monuments) used as a basis for accepting. If not accepted or if nothing was found, state evidence used as basis for establishing location. If reestablished through lost corner proportionate methods, indicate all monuments, distances and directions used to establish.

*Corner was never set. I set this corner by proportionate measurement between the northeast and northwest corners of section 5.*

(c) (d) (e) Plan view of corner with ties to at least 4 witness monuments. If in disagreement with previously established corner, show the distances between the two corners and also indicate the ties to the disputed corner.



(i) I, Richard Marks  
 (type or print name) certify that the corner location on this record was determined by me or under my direction and control and that this U.S. Public Land Survey Monument Record is correct and complete to the best of my knowledge and belief.



Affix seal here

Signature

Date

7/18/1991

*P10*