

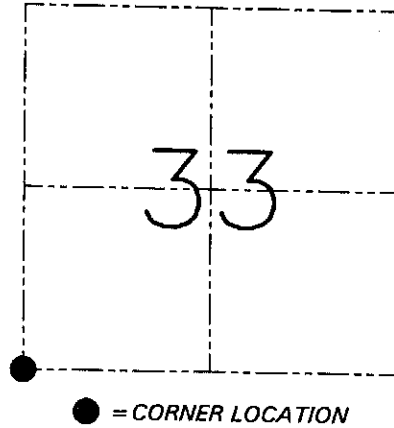
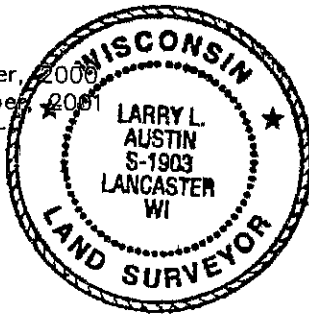
U.S. PUBLIC LAND SURVEY MONUMENT RECORD - GRANT COUNTY, WI
 Section 33, Town 6 North Range 6 West, Town of Wyalusing

CERTIFICATE

I, Larry L. Austin, do hereby certify that the corner location on this record was determined by me and/or under my direct supervision and that this U.S. public land survey monument record is correct and complete to the best of my knowledge and belief.

Dated this 8th day of September, 2008
 Revised this 7th day of November, 2009

Larry L. Austin
 Larry L. Austin S-1903



HISTORY OF CORNER ESTABLISHMENT

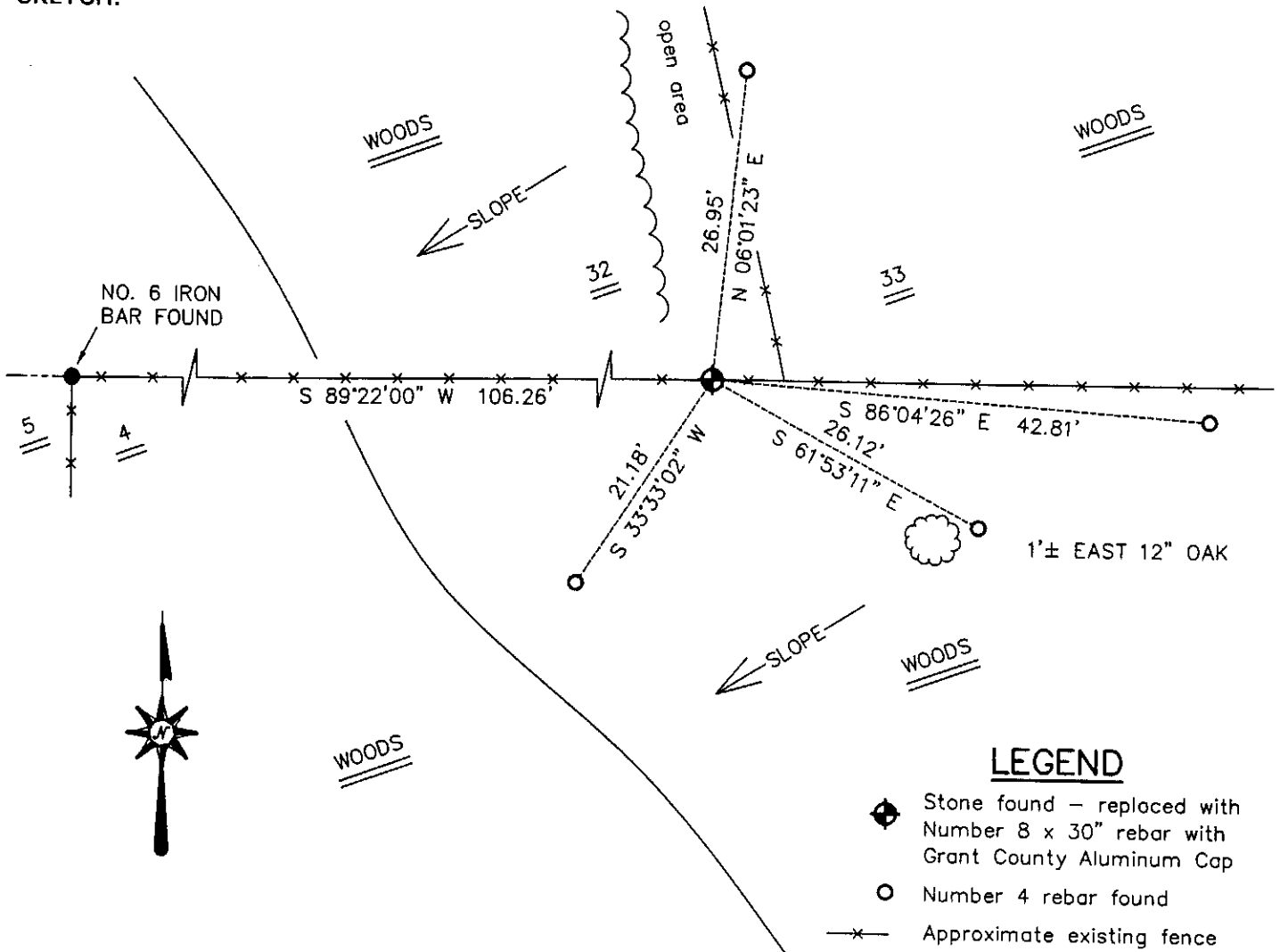
Corner was originally set in 1832 by Sibley.
 In 1991 Richard Marks found an existing stone.

DESCRIPTION OF CORNER EVIDENCE FOUND

I found the existing Stone and replaced it with a No 8 iron bar with cap. Verified this location using EDM & GPS methods.

DESCRIPTION OF CORNER AND WITNESS MONUMENTS, references and accessories used to perpetuate the original or re-established location of this corner. Witnesses to the corner location Bobby Sedgwick & Shelby Blindert

SKETCH:



LEGEND

- Stone found - replaced with Number 8 x 30" rebar with Grant County Aluminum Cap
- Number 4 rebar found
- x— Approximate existing fence

SKETCH NOT TO SCALE

AUSTIN ENGINEERING, LLC

4211 HWY 81 EAST, LANCASTER, WI 53813
 PHONE 608-723-6363 FAX 608-723-6702

FIELDBOOK: SDR33, 20-42
 G: \T6NR6W\33
 C: \SWA\TIE\T6NR6W\129
 CREW: BS-SB-SA-TF

DRAWN BY: SW AUSTIN
 APPROVED: LL AUSTIN

CORNER NUMBER 129

GRANT COUNTY CERTIFIED LAND CORNER

CORNER NUMBER 129

CERTIFICATE:

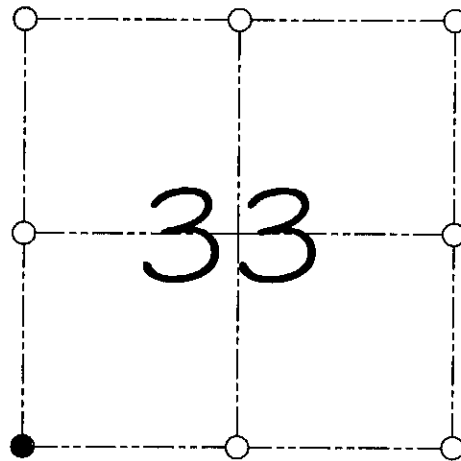
I, Larry L. Austin, do hereby certify that on the 5th day of September, 2000, I found evidence of the Southwest corner of Section 33, Town 6 North, Range 6 West, of the 4th Principal Meridian, and I re-established said corner according to the Wisconsin statutes as shown and described hereon.

Dated this 8th day of September, 2000

Larry L. Austin
Larry L. Austin S-1903



SEAL



● = CORNER LOCATION

SOUTHWEST CORNER OF
SECTION 33, T 6 N R 6 W
TOWN OF WYALUSING

HISTORY OF ORIGINAL CORNER ESTABLISHMENT:

Corner was originally set in 1832 by Sibley.
In 1991 Richard Marks found an existing stone.

DESCRIPTION OF CORNER EVIDENCE FOUND:

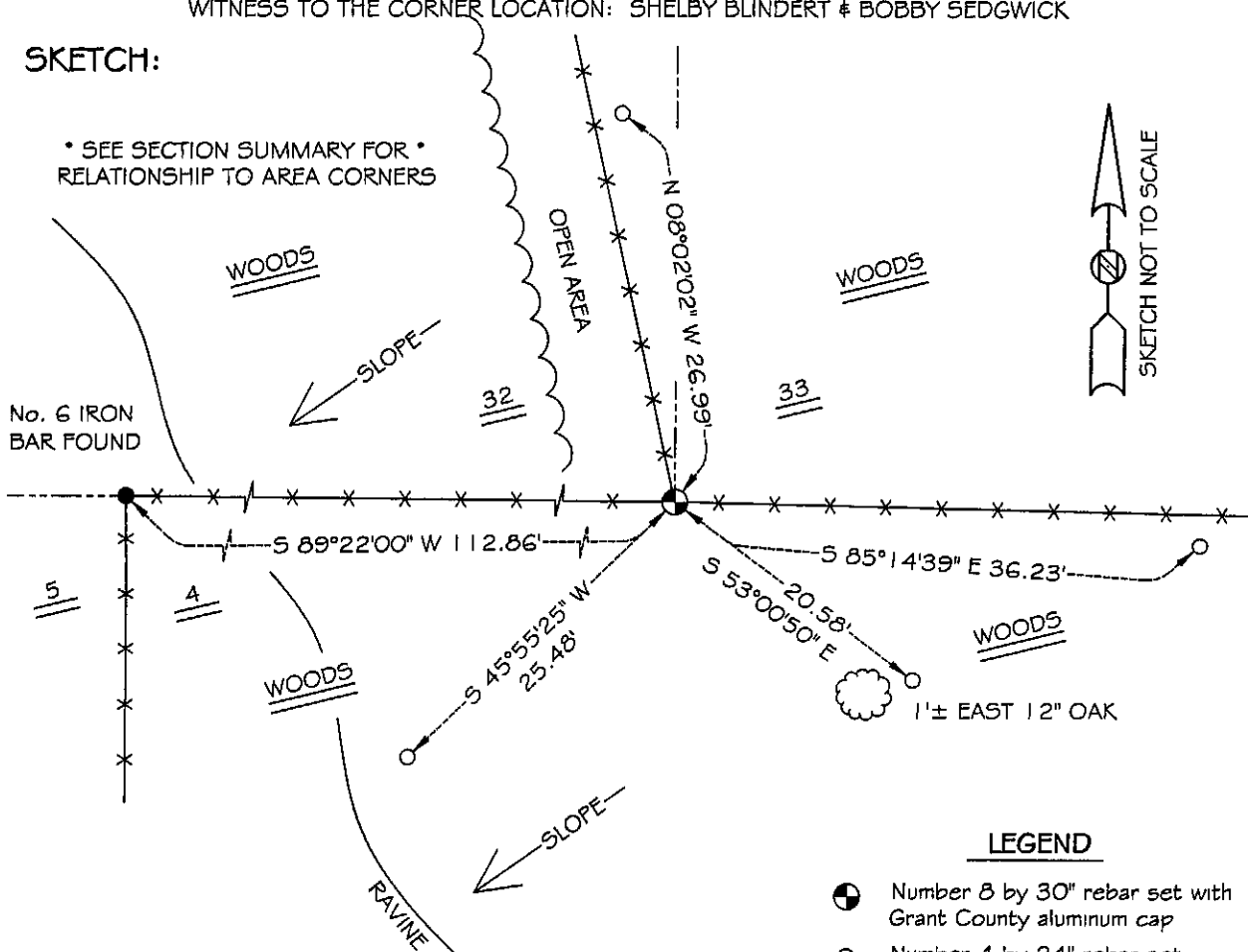
I accepted Mark's location and set a 1" x 30" iron bar with aluminum cap at this location. Verified this location using E.D.M. & G.P.S. methods.

DESCRIPTION OF CORNER AND WITNESS MONUMENTS, references and accessories used to perpetuate the original or re-established location of this corner

WITNESS TO THE CORNER LOCATION: SHELBY BLINDERT & BOBBY SEDGWICK

SKETCH:

* SEE SECTION SUMMARY FOR *
RELATIONSHIP TO AREA CORNERS



LEGEND

- Number 8 by 30" rebar set with Grant County aluminum cap
- Number 4 by 24" rebar set with red plastic cap
- X- Existing fence location

JUL 22 1991

U.S. PUBLIC LAND SURVEY MONUMENT RECORD

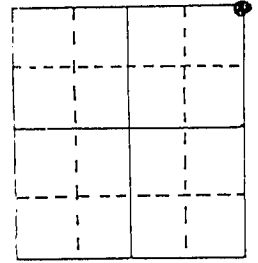
Note: This form is intended and designed to fulfill all requirements of Wisconsin Administrative Code, Chapter A-E 5.02, U.S. Public Land Survey Monument Record (3) (a) (b) (c) (d) (e) (f) (g) (h) (i). An additional sheet may be added if necessary to conform with said requirements.

(a) Corner location: Township S North

Range 6 East/We 1

Town/City/Village Wyalusing

County Grant

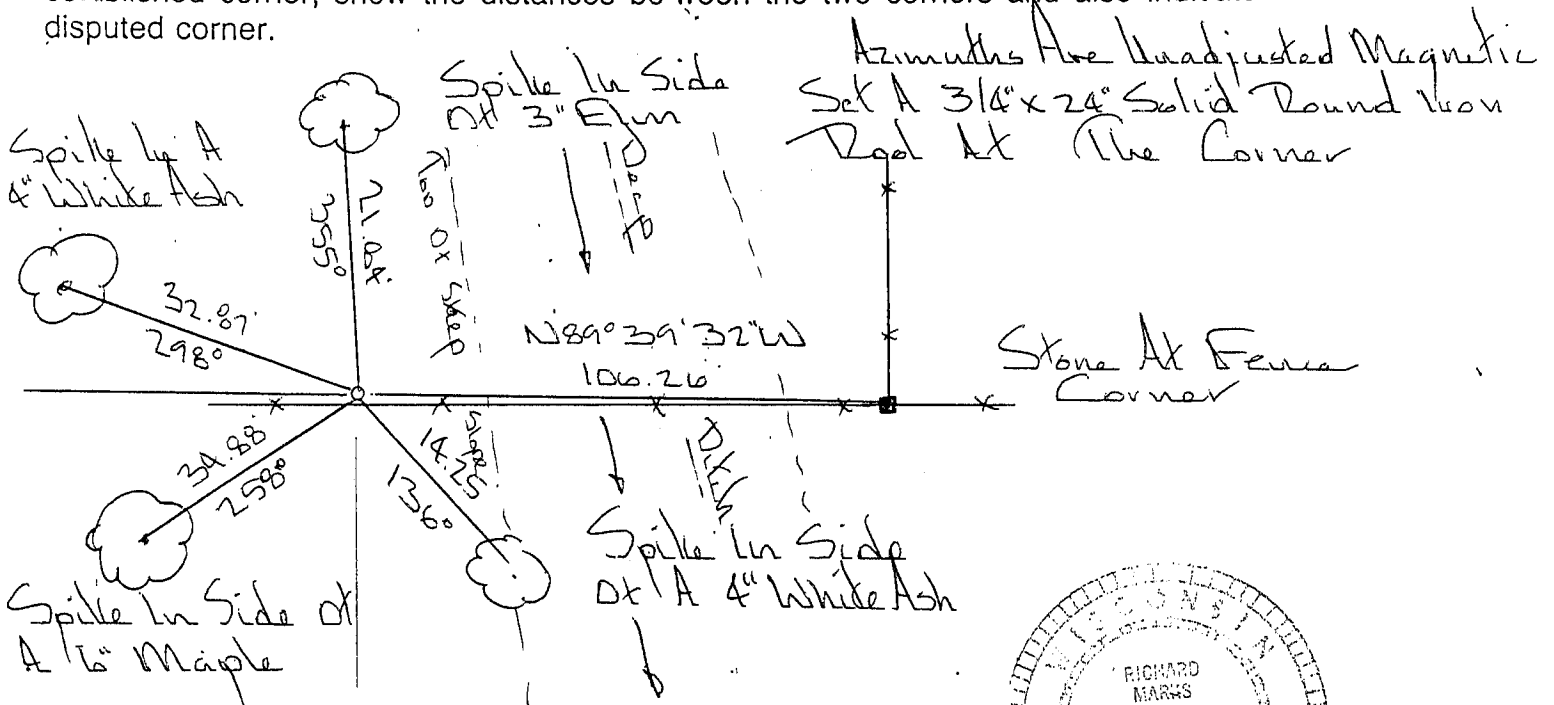


Section 5

(b) (f) (g) (h) Description of monument found at this corner and if it was accepted state all evidence (material, testimonial, occupational, plats, records, other monuments) used as a basis for accepting. If not accepted or if nothing was found, state evidence used as basis for establishing location. If reestablished through lost corner proportionate methods, indicate all monuments, distances and directions used to establish.

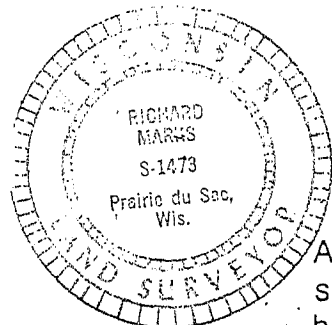
Set Corner Original Record. Distance West of the Southeast Corner of Section 32. T6N. R6W.

(c) (d) (e) Plan view of corner with ties to at least 4 witness monuments. If in disagreement with previously established corner, show the distances between the two corners and also indicate the ties to the disputed corner.



(i) I, Richard Marks

(type or print name) certify that the corner location on this record was determined by me or under my direction and control and that this U.S. Public Land Survey Monument Record is correct and complete to the best of my knowledge and belief.



Affix seal here

Richard Marks
Signature

7/18/1991
Date