

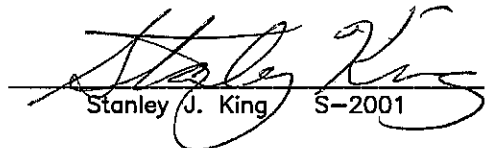
# CERTIFIED LAND CORNER

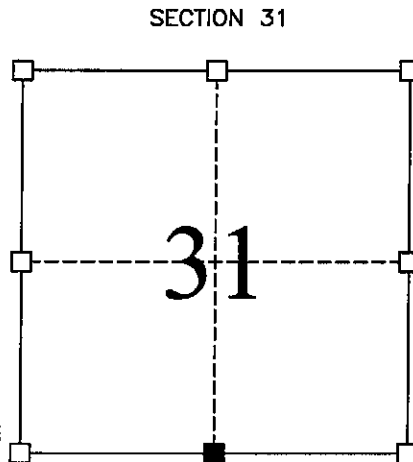
## STATE OF WISCONSIN COUNTY OF GRANT

### CERTIFICATE

I, Stanley J. King, do hereby certify that the corner location of this record was determined by me and/or under my direct supervision and that this U.S. public land survey monument record is correct and complete to the best of my knowledge and belief.

Dated this 3rd day of March, 2002

  
Stanley J. King S-2001



■ = Corner Location  
T6N R6W  
Town of: WYALUSING

Seal:

#### History of original corner establishment:

Original corner was set in 1832  
In 1993 Richard Marks set the Northwest corner and the North One-Quarter of section 6.

#### Description of corner evidence found:

I found the Northwest corner, the North One-Quarter, and the Northeast corner of Section 6 and set the South One-Quarter of Section 31 at the propoportistante offset. This was verified using EDM methods.

#### Description of corner and witness monuments, references, and accessories used to perpetuate the original or re-established location of this corner:

Witnesses to corner location:

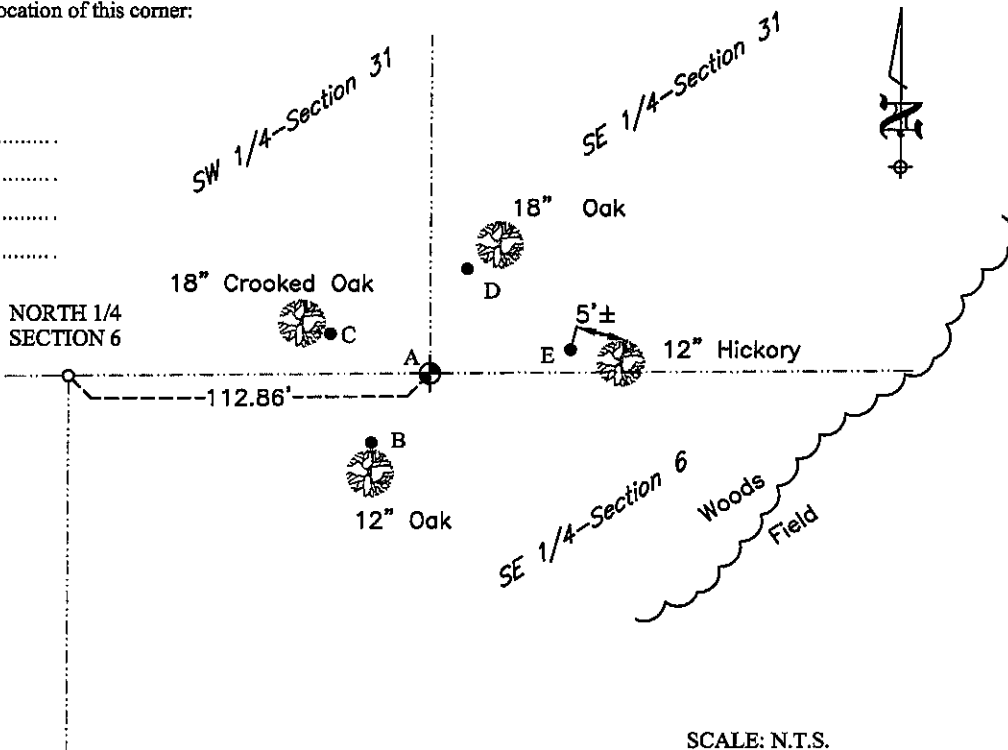
Daniel J. Dreesens

Kathie A. Kobbervig

#### LEGEND

- ⊕ = SECTION CORNER (GRANT COUNTY ALUM. MONUMENT)
- = TIE BAR
- = 3/4" BAR FOUND

- (A-B) = S 39°58'28" W 28.26'
- (A-C) = N 68°21'39" W 33.46'
- (A-D) = N 19°21'32" E 34.70'
- (A-E) = N 80°15'54" E 44.25'



SCALE: N.T.S.



**BLACKHAWK**  
ENGINEERING, Ltd.

Civil & Municipal Engineers and Building Design  
2 INSIGHT DRIVE OFFICE PHONE: (608) 348-4433  
PLATTEVILLE, WISCONSIN FAX: (608) 348-4449

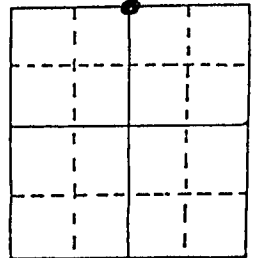
SURVEY CREW: DJD, KAK  
DRAWN BY: DJD  
DATE: MARCH 3, 2002  
FILE: F:\ACAD12\2001\01-123\TIESHEET\WYALUSING(SOUTH31).DWG

# U.S. PUBLIC LAND SURVEY MONUMENT RECORD

Note: This form is intended and designed to fulfill all requirements of Wisconsin Administrative Code, Chapter A-E 5.02, U.S. Public Land Survey Monument Record (3) (a) (b) (c) (d) (e) (f) (g) (h) (i). An additional sheet may be added if necessary to conform with said requirements.

(a) Corner location: Township 5 North  
 Range 6 East/West

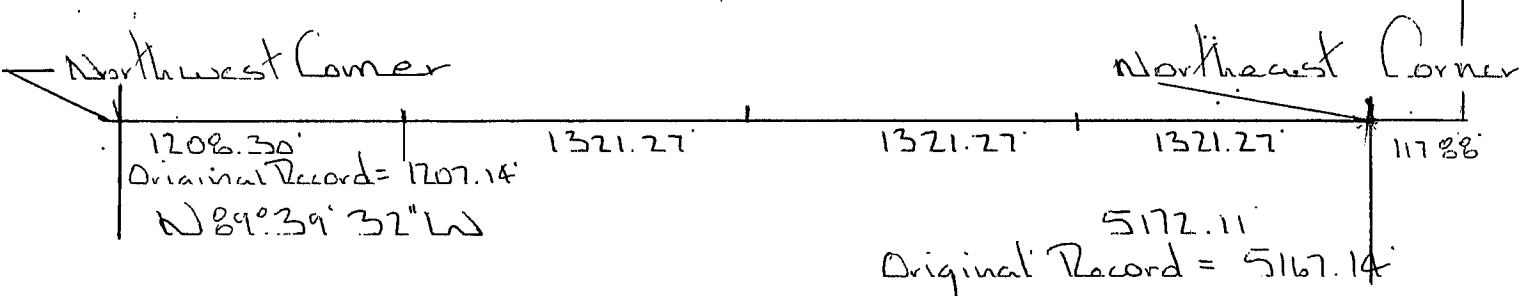
Town/City/Village Wyalusing  
 County Grant



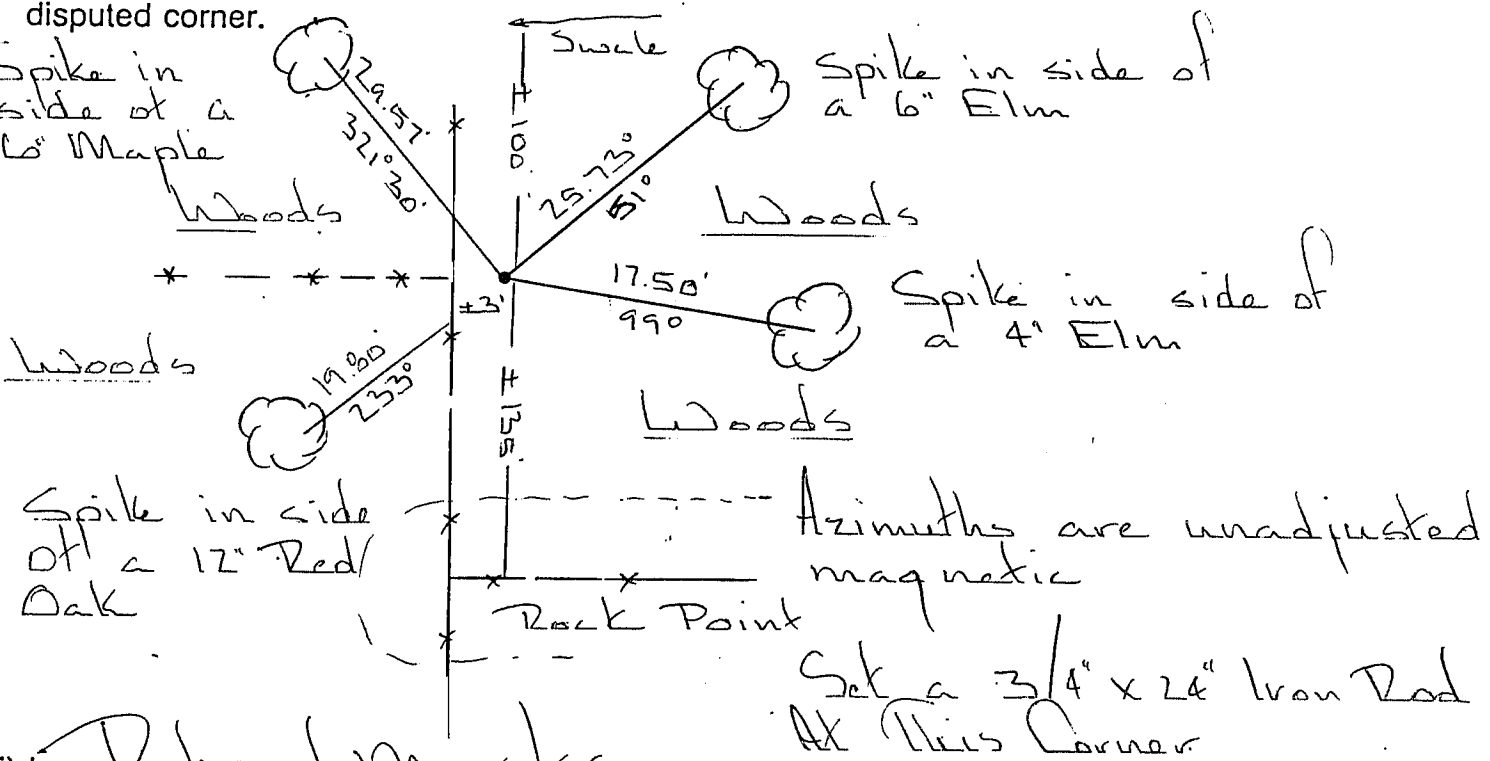
Section 6

b) (f) (g) (h) Description of monument found at this corner and if it was accepted, state all evidence (material, testimonial, occupational, plats, records, other monuments) used as a basis for accepting. If not accepted or if nothing was found, state evidence used as basis for establishing location. If reestablished through lost corner proportionate methods, indicate all monuments, distances and directions used to establish.

*I set this corner by single proportionate measurement between the Northeast and Northwest Corners of Section 6*



c) (d) (e) Plan view of corner with ties to at least 4 witness monuments. If in disagreement with previously established corner, show the distances between the two corners and also indicate the ties to the disputed corner.



*Set a 3/4" x 24" Iron Rod At This Corner*

I, Richard Marks  
 (type or print name) certify that the corner location on this record was determined by me or under my direction and control and that this U.S. Public Land Survey Monument Record is correct and complete to the best of my knowledge and belief.

Richard Marks Signature  
4/23/93 Date

