

**U.S. PUBLIC LAND SURVEY MONUMENT RECORD - GRANT COUNTY, WI**

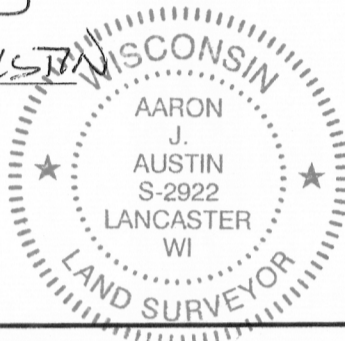
Section 31, Town 6 North Range 6 West, Town of Wyalusing

**CERTIFICATE:**

I, Aaron J. Austin, do hereby certify that the corner location on this record was determined by me and/or under my direct supervision and that this U.S. Public Land Survey Monument Record is correct and complete to the best of my knowledge and belief.

Dated this 30th day of May, 2013.

Aaron J. Austin  
Aaron J. Austin, S-2922



● = CORNER LOCATION

**HISTORY OF CORNER ESTABLISHMENT:**

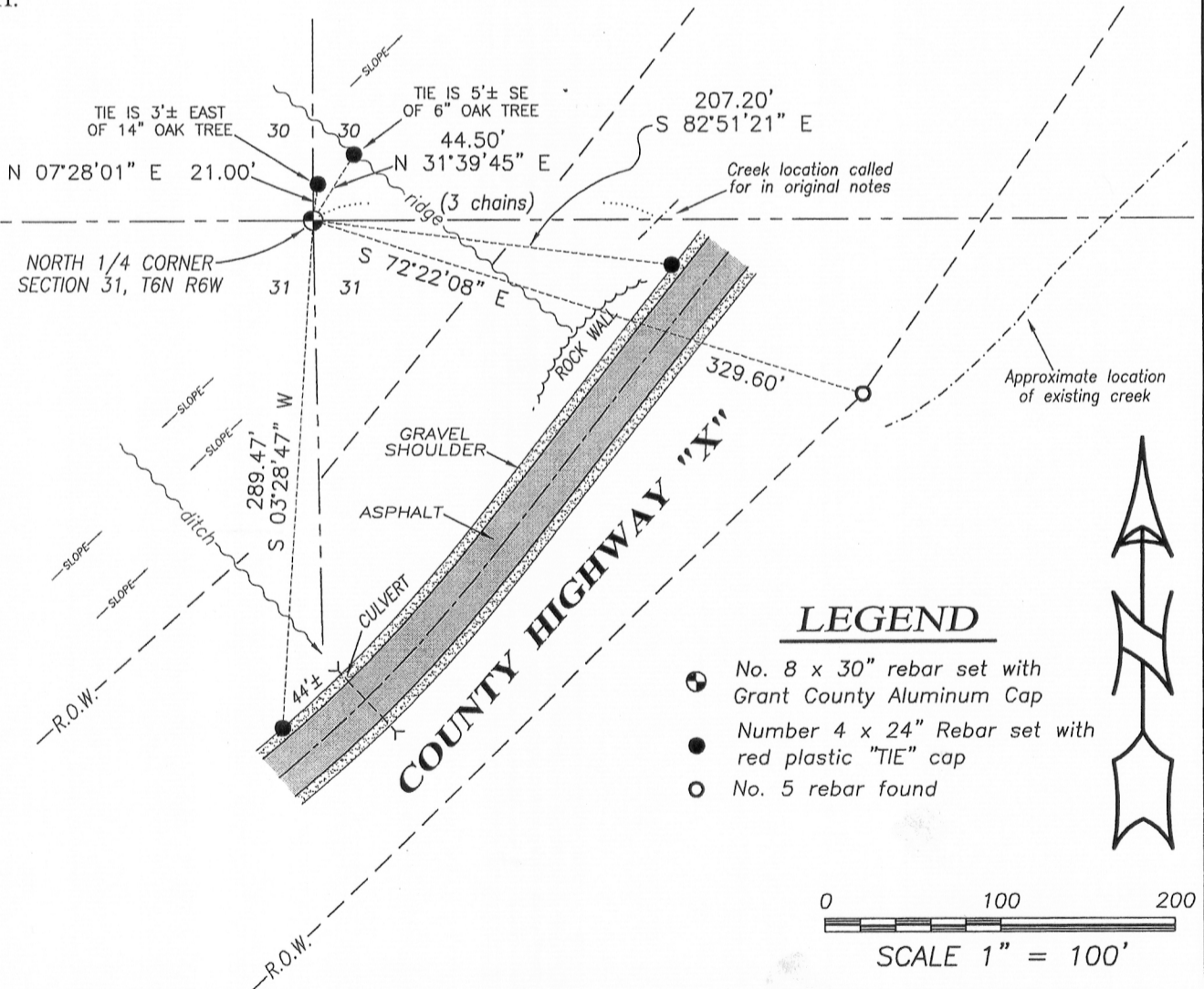
Corner originally set in 1832 by Robert Clark. In 1854 Goodrich retraced the Section corner by a survey filed in Book C, Page 106. I did not find any record for this corner shown on Right of Way Plans or FW-Tracts. No other record was found for this corner.

**DESCRIPTION OF CORNER EVIDENCE FOUND:**

No occupational or physical evidence was found. I reset the corner at the Projection of the North line of the NW 1/4 of Section 32 at the recorded dimension of 2640'. The call to the brook in the original notes do not check well with the retraced corner. I believe this is due to the construction of County Highway "X".

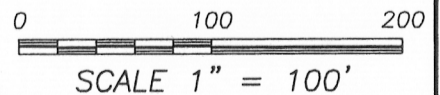
**DESCRIPTION OF CORNER AND WITNESS MONUMENTS, references and accessories used to perpetuate the original or re-established location of this corner. Witnesses to corner location Shane Austin.**

**SKETCH:**



**LEGEND**

- ⊙ No. 8 x 30" rebar set with Grant County Aluminum Cap
- Number 4 x 24" Rebar set with red plastic "TIE" cap
- No. 5 rebar found



4211 HWY 81 E, LANCASTER, WI 53813  
PHONE: 608-723-6363 FAX: 608-723-6702

JOB NO: 12s214  
G:\HMP\T6NR6W\31  
H:\TIE\T6NR6W\112

FIELDBOOK: TDSR  
DRAWN BY: AJ AUSTIN  
CREW: SW AUSTIN