

# GRANT COUNTY CERTIFIED LAND CORNER

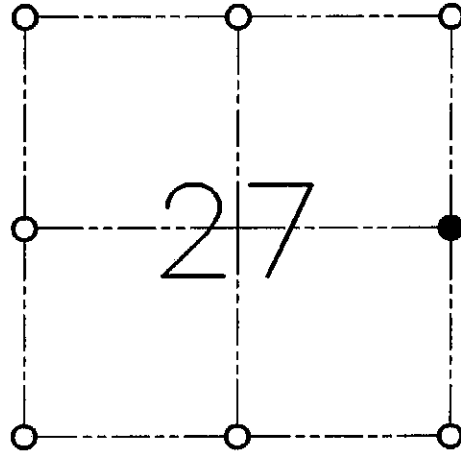
CORNER NO. 98

**CERTIFICATE:**

I, LARRY L. AUSTIN, DO HEREBY CERTIFY THAT ON EIGHTH DAY OF JULY, 1998 I FOUND NO EVIDENCE OF THE EAST 1/4 CORNER OF SECTION 27, TOWN 6 NORTH, RANGE 6 WEST, OF THE FOURTH PRINCIPAL MERIDIAN, AND I RE-ESTABLISHED SAID CORNER ACCORDING TO THE WISCONSIN STATUTES AS SHOWN AND DESCRIBED HEREON.

DATED THIS TENTH DAY OF AUGUST, 1998

*Larry L. Austin*  
LARRY L. AUSTIN S-1903



● = CORNER LOCATION

**EAST 1/4 CORNER OF  
SECTION 27, T 6 N R 6 W  
TOWN OF WYALUSING**

**HISTORY OF ORIGINAL CORNER ESTABLISHMENT:**

CORNER WAS SET IN 1832 BY ROBERT CLARK.

**DESCRIPTION OF CORNER EVIDENCE FOUND:**

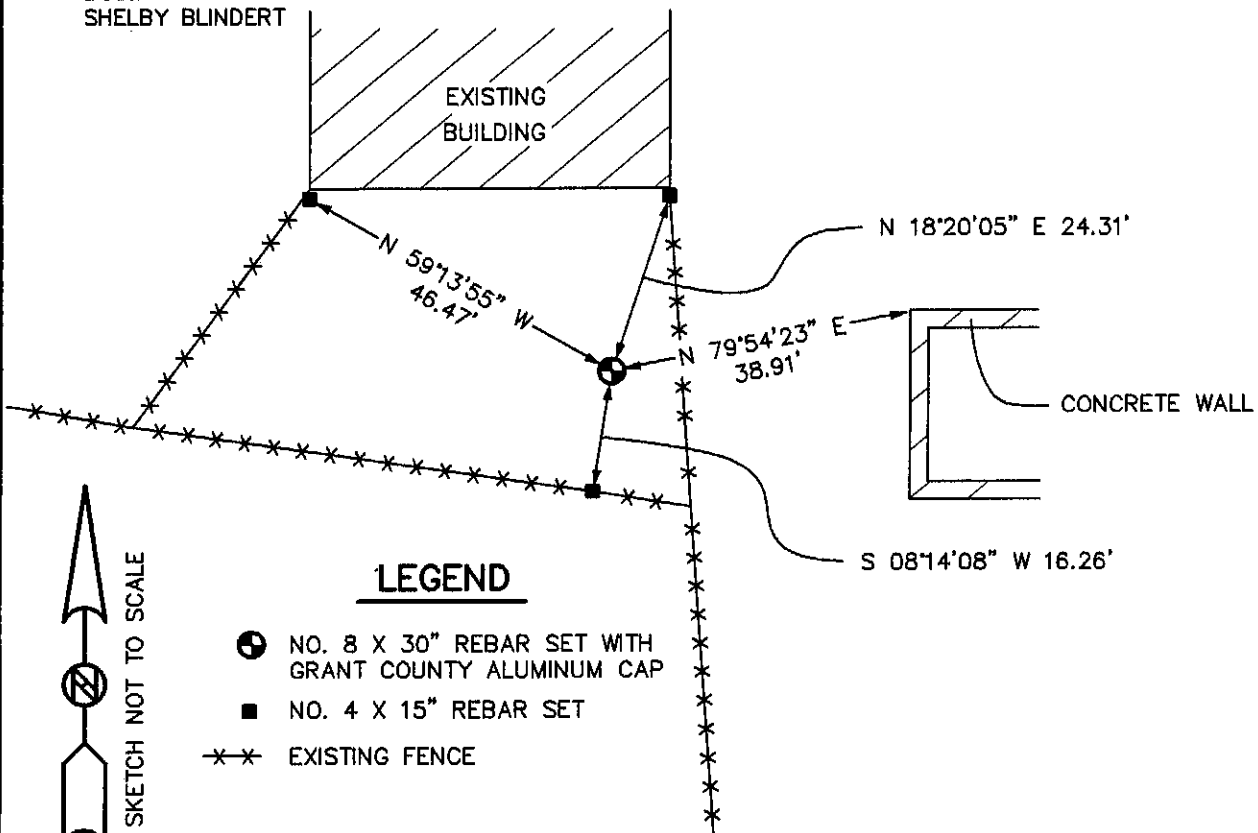
I FOUND NO EVIDENCE OF THE CORNER LOCATION. I SET THE CORNER BY SINGLE PROPORTION ALONG THE EAST LINE OF THE SOUTHEAST 1/4. VERIFIED THIS LOCATION USING E.D.M. AND G.P.S. METHODS.

**DESCRIPTION OF CORNER AND WITNESS MONUMENTS, REFERENCES AND ACCESSORIES USED TO PERPETUATE THE ORIGINAL OR RE-ESTABLISHED LOCATION OF THIS CORNER:**

**WITNESS TO THE CORNER LOCATION:**

BOBBY SEDGWICK  
SHELBY BLINDERT

**SKETCH:**



**LEGEND**

- NO. 8 X 30" REBAR SET WITH GRANT COUNTY ALUMINUM CAP
- NO. 4 X 15" REBAR SET
- \*-\* EXISTING FENCE