

GRANT COUNTY CERTIFIED LAND CORNER

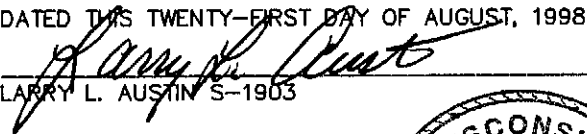
CORNER NO. 86

CERTIFICATE:

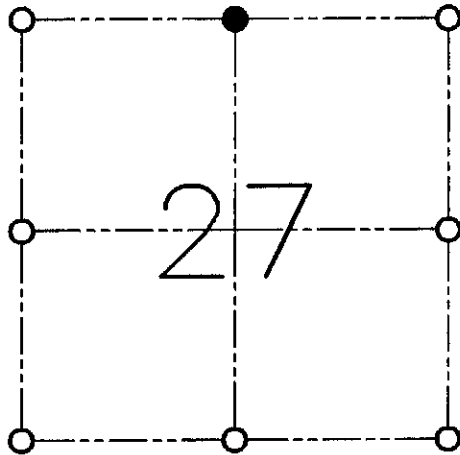
I, LARRY L. AUSTIN, DO HEREBY CERTIFY THAT ON EIGHTH DAY OF JULY, 1998, I FOUND OCCUPATIONAL EVIDENCE OF THE NORTH 1/4 OF SECTION 27, TOWN 6 NORTH, RANGE 6 WEST, OF THE FOURTH PRINCIPAL MERIDIAN, AND I RE-ESTABLISHED SAID CORNER ACCORDING TO THE WISCONSIN STATUTES AS SHOWN AND DESCRIBED HEREON.

DATED THIS TWENTY-FIRST DAY OF AUGUST, 1998

LARRY L. AUSTIN S-1903




SEAL



● = CORNER LOCATION

**NORTH 1/4 OF SECTION 27
T 6 N R 6 W
TOWN OF WYALUSING**

HISTORY OF ORIGINAL CORNER ESTABLISHMENT:

CORNER WAS SET IN 1832 BY ROBERT CLARK.

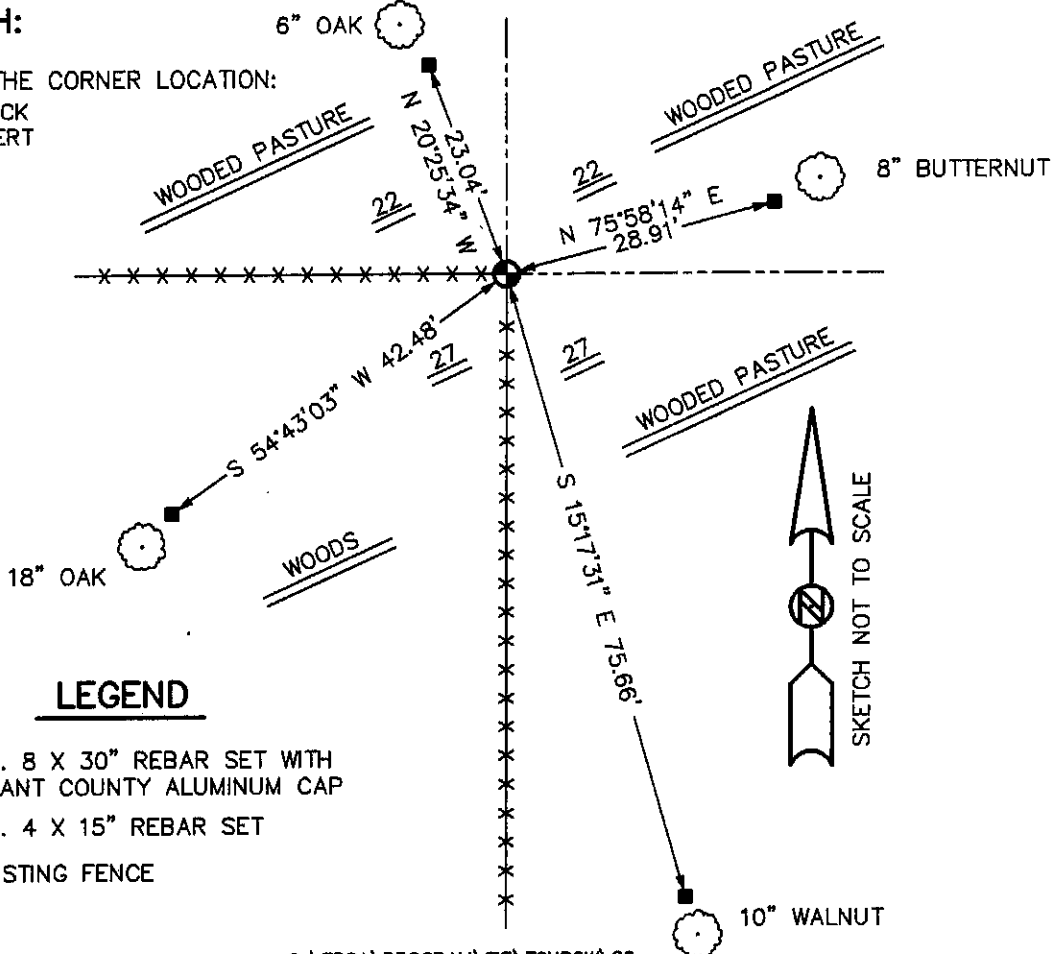
DESCRIPTION OF CORNER EVIDENCE FOUND:

I FOUND AN OCCUPIED FENCE CORNER. I ACCEPTED THIS LOCATION AFTER AND E.D.M. AND G.P.S. TRAVERSE OF THE AREA CORNERS.

DESCRIPTION OF CORNER AND WITNESS MONUMENTS, REFERENCES AND ACCESSORIES USED TO PERPETUATE THE ORIGINAL OR RE-ESTABLISHED LOCATION OF THIS CORNER:

SKETCH:

WITNESS TO THE CORNER LOCATION:
BOBBY SEDGWICK
SHELBY BLINDERT



LEGEND

- NO. 8 X 30" REBAR SET WITH GRANT COUNTY ALUMINUM CAP
- NO. 4 X 15" REBAR SET
- x—x— EXISTING FENCE

