

U.S. PUBLIC LAND SURVEY MONUMENT RECORD - GRANT COUNTY, WI

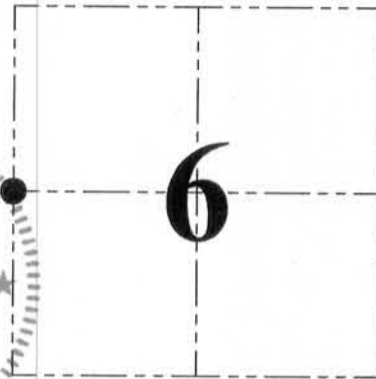
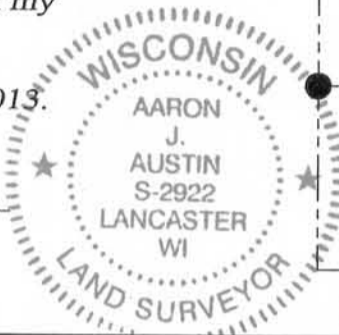
Section 6, Town 5 North Range 6 West, Town of Wyalusing

CERTIFICATE:

I, Aaron J. Austin, do hereby certify that the corner location on this record was determined by me and/or under my direct supervision and that this U.S. Public Land Survey Monument Record is correct and complete to the best of my knowledge and belief.

Dated this 25th day of November, 2013.

Aaron J. Austin
 Aaron J. Austin, S-2922



● = CORNER LOCATION

HISTORY OF CORNER ESTABLISHMENT:

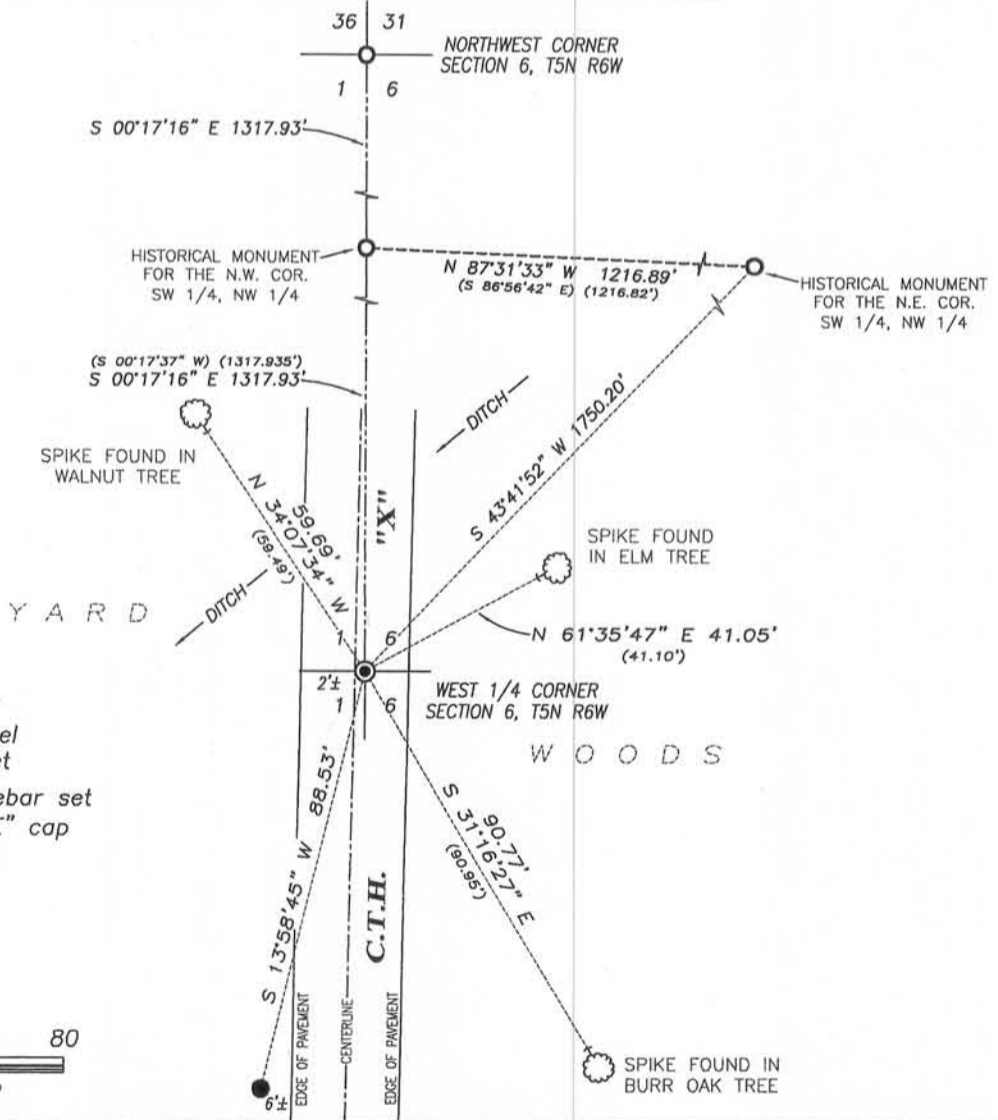
A P.K. Nail was set for the corner by Homer Ralph Jr. for this corner on a survey dated 12-20-1974. Paul Brashaw tied to this corner on a survey dated 2-8-1983 and on a survey dated 3-21-1983. Richard Marks tied to this corner on a survey dated 4-23-1993 and a survey dated 1-17-1997. Larry Austin also tied to this corner on a survey dated 5-14-1998. Richard Marks prepared a U.S. Public Land Survey Monument record for this corner.

DESCRIPTION OF CORNER EVIDENCE FOUND:

I could not find the P.K. Nail set by Homer Ralph Jr. I did find three of the four ties set by Richard Marks. Due to the ties being nails in trees, I re-established the corner utilizing rebars found at the Northwest corner of Section 6 and the Northwest corner of the SW 1/4 of the NW 1/4. I felt that this was a more accurate retracement and it did match the existing ties relatively close. (See sketch below) I also set one additional tie for this corner.

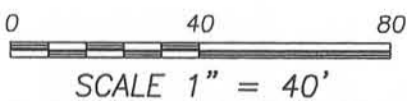
DESCRIPTION OF CORNER AND WITNESS MONUMENTS, references and accessories used to perpetuate the original or re-established location of this corner. Witnesses to corner location Shane Austin.

SKETCH:



LEGEND

- 1/2" x 4 3/4" Steel Cotton Gin Spike set
- Number 4 x 24" Rebar set with red plastic "TIE" cap
- No. 6 rebar found
- ⊙ Spike found in tree (as designated)
- () Recorded as



4211 HWY 81 E, LANCASTER, WI 53813
 PHONE: 608-723-6363 FAX: 608-723-6702

JOB NO: 13s176
 G:\13s176
 H:\TIE\T5NR6W\14

FIELDBOOK: TDSR
 DRAWN BY: AJ AUSTIN
 CREW: SW AUSTIN