

U.S. PUBLIC LAND SURVEY MONUMENT RECORD - GRANT COUNTY, WI

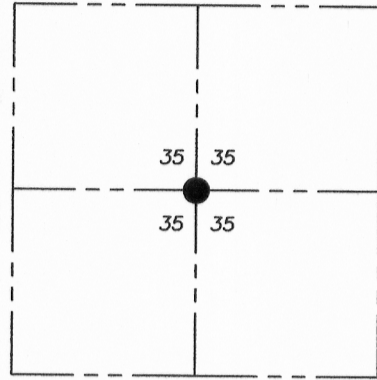
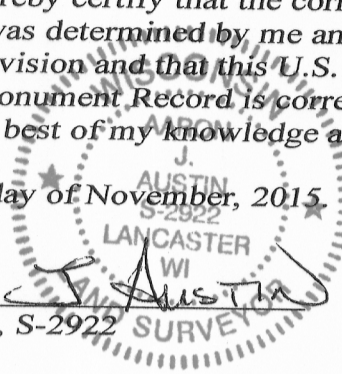
Section 35, Town 6 North Range 5 West, Town of Patch Grove

CERTIFICATE:

I, Aaron J. Austin, Wisconsin Professional Land Surveyor, do hereby certify that the corner location on this record was determined by me and/or under my direct supervision and that this U.S. Public Land Survey Monument Record is correct and complete to the best of my knowledge and belief.

Dated this 3rd day of November, 2015.

Aaron J. Austin
 Aaron J. Austin, S-2922 SURVEYOR



● = CORNER LOCATION

HISTORY OF CORNER ESTABLISHMENT:

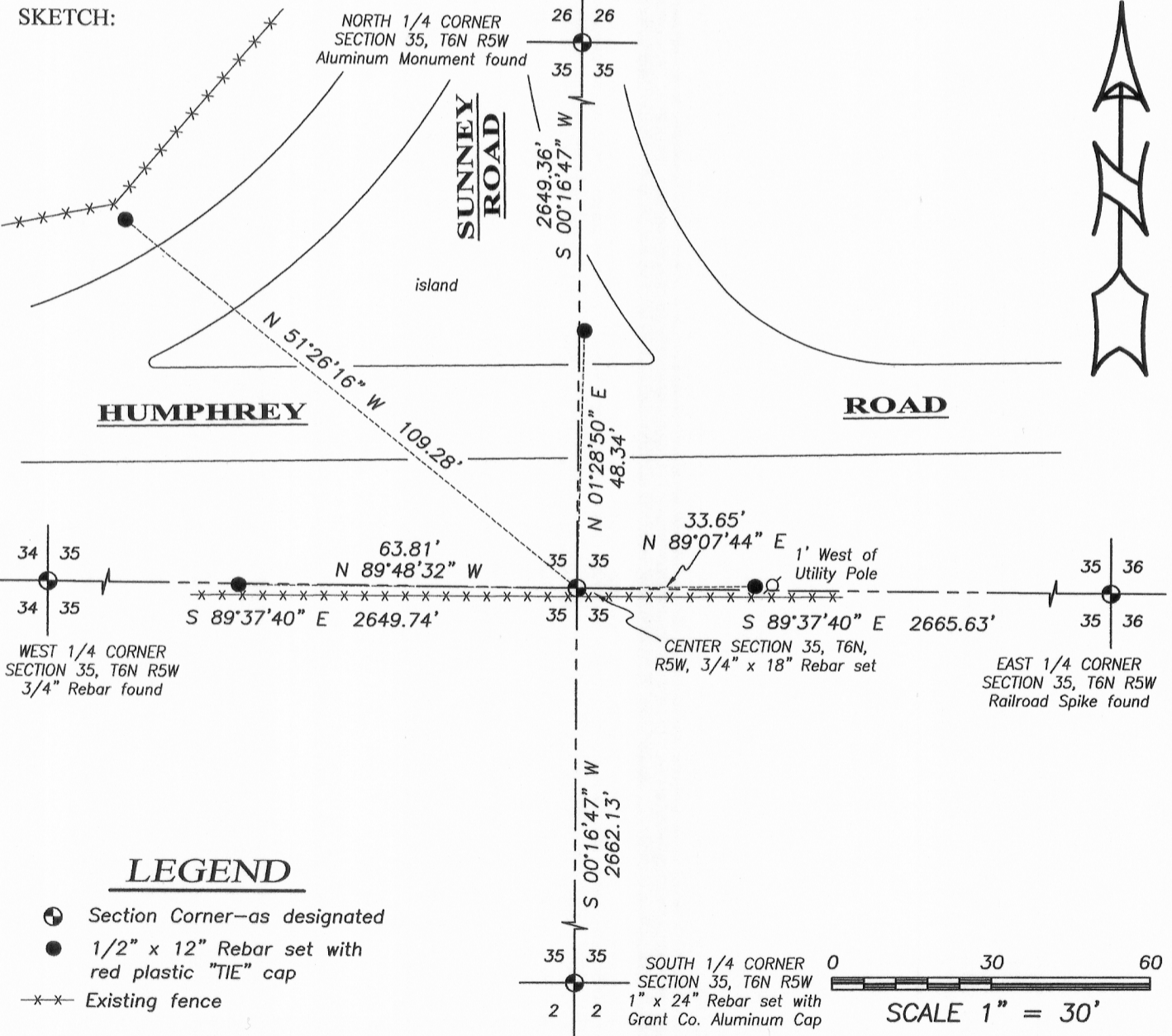
Corner was not set with original survey.

DESCRIPTION OF CORNER EVIDENCE FOUND:

I set a 3/4" rebar at the intersection of the North-South and East-West 1/4 lines. I set 4 witness corners and verified this location with E.D.M. and G.P.S. methods.

DESCRIPTION OF CORNER AND WITNESS MONUMENTS, references and accessories used to perpetuate the original or re-established location of this corner. Witnesses to corner location Shane Austin.

SKETCH:



4211 HWY 81 E, LANCASTER, WI 53813
 PHONE: 608-723-6363 FAX: 608-723-6702

JOB NO: 15s217
 H:CRD\15s217
 H:\TIE\T6NR5W\118.5

FIELDBOOK: TDSR
 DRAWN BY: AJ AUSTIN
 CREW: SW AUSTIN

118.5

NOV 16 2015