

U.S. PUBLIC LAND SURVEY MONUMENT RECORD - GRANT COUNTY, WI

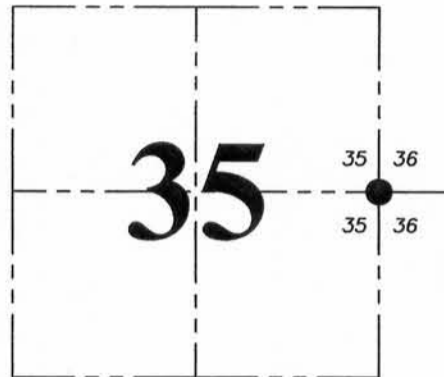
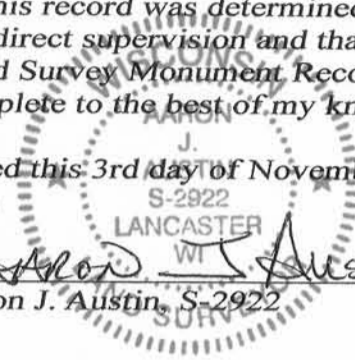
Section 35, Town 6 North Range 5 West, Town of Patch Grove

CERTIFICATE:

I, Aaron J. Austin, Wisconsin Professional Land Surveyor, do hereby certify that the corner location on this record was determined by me and/or under my direct supervision and that this U.S. Public Land Survey Monument Record is correct and complete to the best of my knowledge and belief.

Dated this 3rd day of November, 2015.

Aaron J. Austin
 Aaron J. Austin, S-2922



● = CORNER LOCATION

HISTORY OF CORNER ESTABLISHMENT:

1833-Parke set original corner.

1985-Douglas Malliet set a Railroad Spike at the corner on a Survey filed in Book, Page 102.

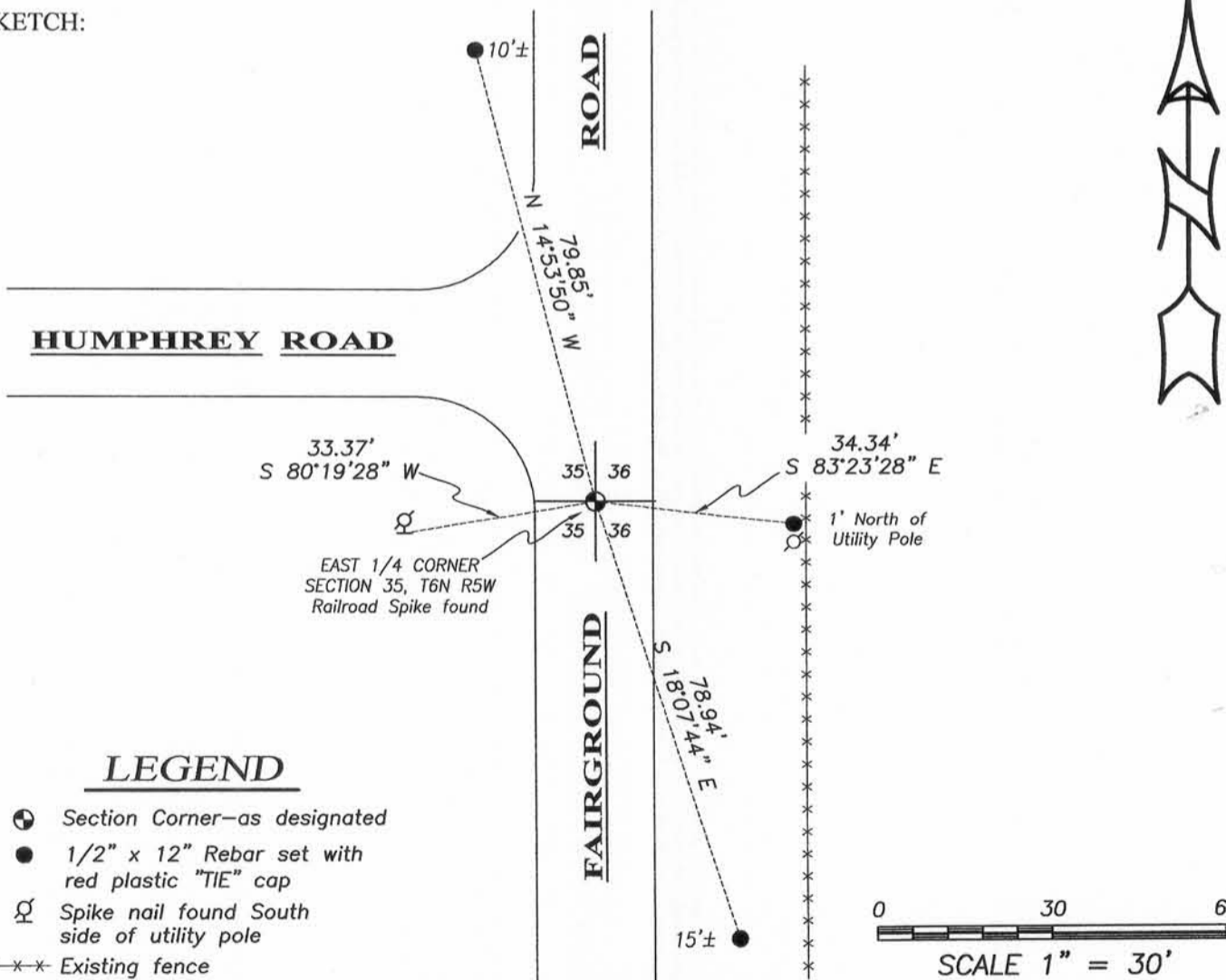
1987-Ronald Hayden found the Railroad Spike and set 4 ties for the corner and prepared a Certified Land Corner Record.

DESCRIPTION OF CORNER EVIDENCE FOUND:

I found the Railroad Spike set by Malliet and 1 witness corner as set by Hayden. I set a 3 additional witness corners and verified this location with E.D.M. and G.P.S. methods.

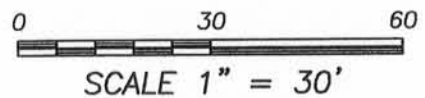
DESCRIPTION OF CORNER AND WITNESS MONUMENTS, references and accessories used to perpetuate the original or re-established location of this corner. Witnesses to corner location Shane Austin.

SKETCH:



LEGEND

- ⊕ Section Corner—as designated
- 1/2" x 12" Rebar set with red plastic "TIE" cap
- ⊗ Spike nail found South side of utility pole
- *** Existing fence



4211 HWY 81 E, LANCASTER, WI 53813
 PHONE: 608-723-6363 FAX: 608-723-6702

JOB NO: 15s217
 H:CRD\15s217
 H:\TIE\T6NR5W\119

FIELDBOOK: TDSR
 DRAWN BY: AJ AUSTIN
 CREW: SW AUSTIN

CERTIFIED LAND CORNER

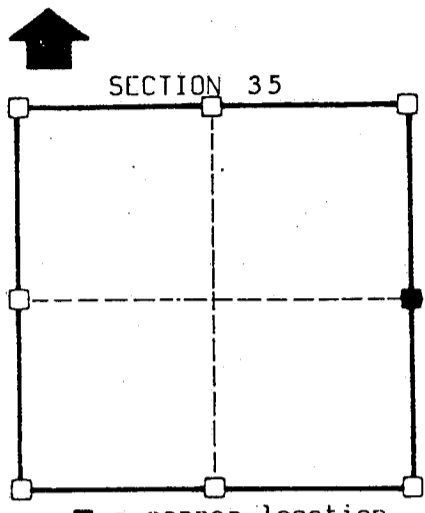
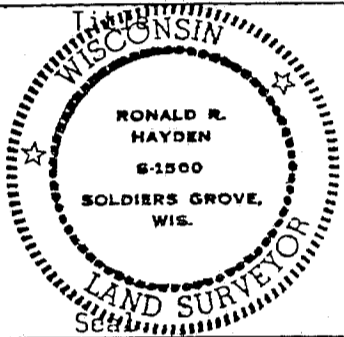
STATE OF WISCONSIN)
 COUNTY OF GRANT) S.S.

CERTIFICATE

I, Ronald R. Hayden, do hereby certify that on the 8th day of December 1987, I found (evidence) (~~no evidence~~) of the E 1/2 corner of Section 35, T 6 N, R 5 W, Fourth Principal Meridian, and I re-established said corner according to the Wisconsin Statutes as shown and described hereon.

Dated this 21 day of December 1987

Ronald R. Hayden



■ = corner location
 T 6 N R 5 W
 Town of: Patch Grove

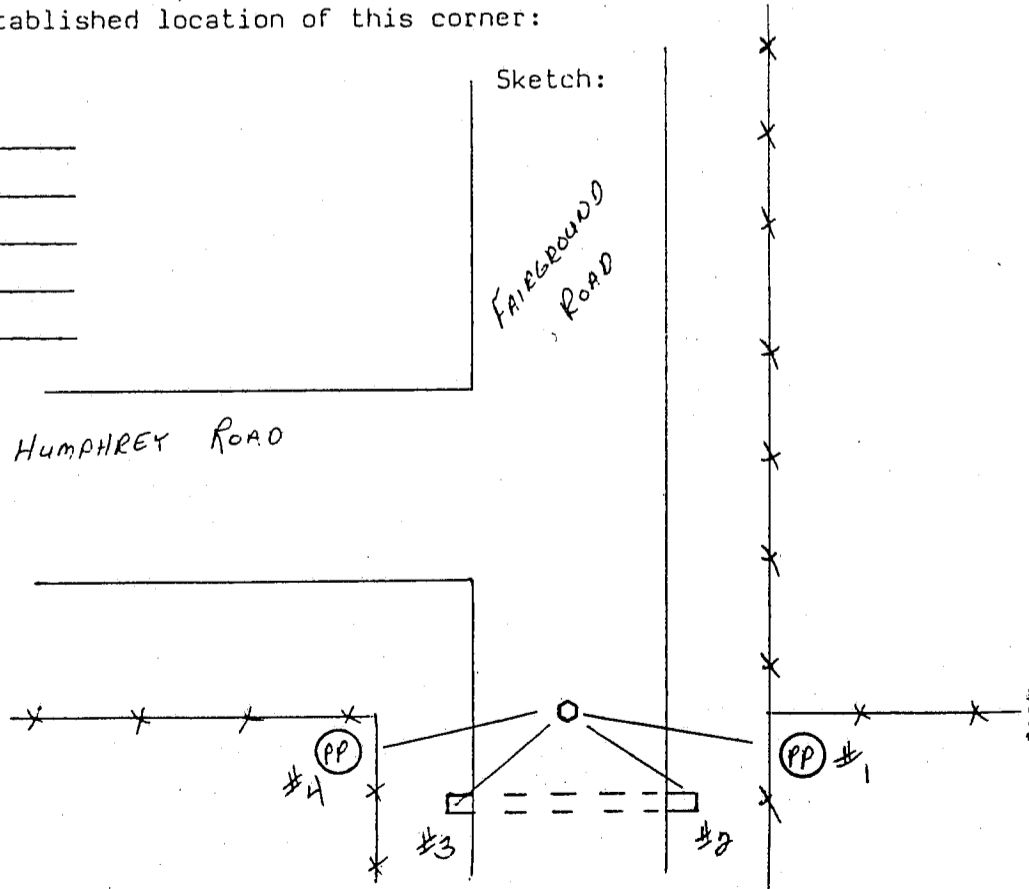
History of original corner establishment:
 Town lines established by Lucious Lyon.
 Subdivision by Harvey Parke in 1833.

Description of corner evidence found: Found railroad spike set by Burbach Engineering.

Description of corner and witness monuments, references and accessories used to perpetuate the original or re-established location of this corner:

Witnesses to corner location:
Ronald R. Hayden
Carol S. Hayden

Sketch:



See back for witness descriptions.

HUMPHREY ROAD

FAIRGROUND ROAD

Survey Control Order
 horizontal
 vertical

WISCONSIN COORDINATE SYSTEM

Corner	East(X)	North(Y)	Elevation(Z)	Zone
Control Sta. Name				

WITNESS DESCRIPTIONS

- 1) Found a spike nail driven in the Southwest side of a power pole which bears: S 83° E 33.99'.
- 2) Top of a culvert in Fairground Road which bears: S 72° E 18.85'.
- 3) Top of a culvert in Fairground Road which bears: S 74° W 22.05'.
- 4) Found a spike nail driven into the South side of a power pole which bears: S 79° W 33.37'.