

U.S. PUBLIC LAND SURVEY MONUMENT RECORD - GRANT COUNTY, WI

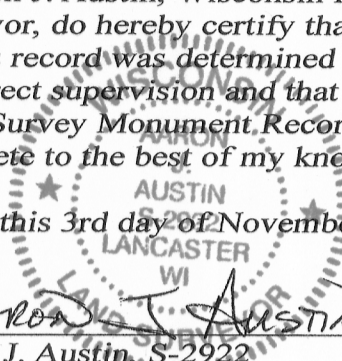
Section 35, Town 6 North Range 5 West, Town of Patch Grove

CERTIFICATE:

I, Aaron J. Austin, Wisconsin Professional Land Surveyor, do hereby certify that the corner location on this record was determined by me and/or under my direct supervision and that this U.S. Public Land Survey Monument Record is correct and complete to the best of my knowledge and belief.

Dated this 3rd day of November, 2015.

Aaron J. Austin
 Aaron J. Austin, S-2922



HISTORY OF CORNER ESTABLISHMENT:

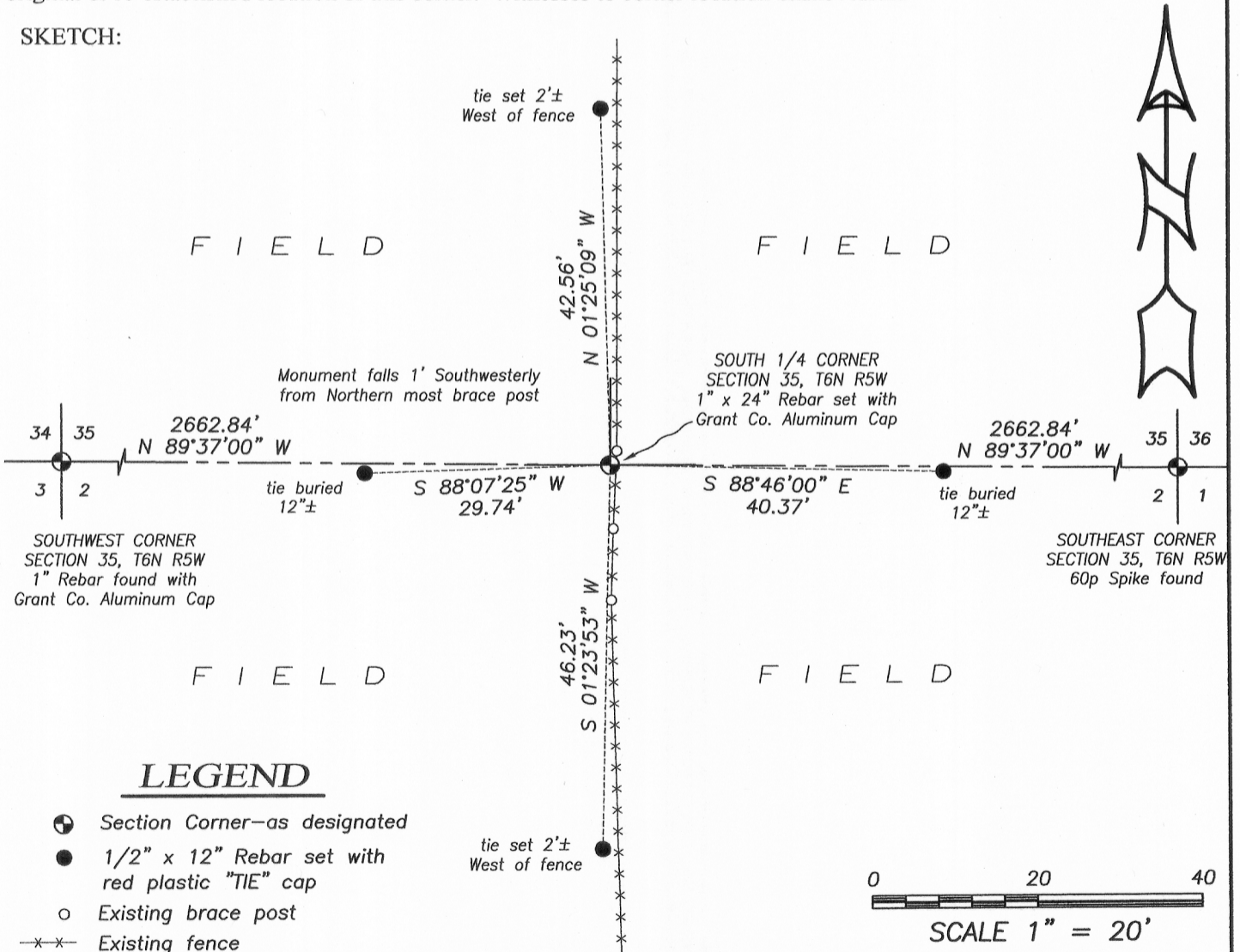
1832-Sibley set original corner.
 1850 Stuntz tied to the corner on a Survey filed in Book B, Page 244.
 No other record was found for this corner.

DESCRIPTION OF CORNER EVIDENCE FOUND:

I reset the corner online and midway between the Southwest corner and the Southeast corner of Section 35. This matched a North-South fence extremely well for Easting and fell just South of an existing brace post. I set a 4 witness corners and verified this location with E.D.M. and G.P.S. methods.

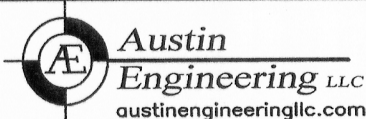
DESCRIPTION OF CORNER AND WITNESS MONUMENTS, references and accessories used to perpetuate the original or re-established location of this corner. Witnesses to corner location Shane Austin.

SKETCH:



LEGEND

- Section Corner—as designated
- 1/2" x 12" Rebar set with red plastic "TIE" cap
- Existing brace post
- x-x- Existing fence



4211 HWY 81 E, LANCASTER, WI 53813
 PHONE: 608-723-6363 FAX: 608-723-6702

JOB NO: 15s217
 H:\CRD\15s217
 H:\TIE\T6NR5W\124

FIELDBOOK: TDSR
 DRAWN BY: AJ AUSTIN
 CREW: SW AUSTIN