

U.S. PUBLIC LAND SURVEY MONUMENT RECORD - GRANT COUNTY, WI

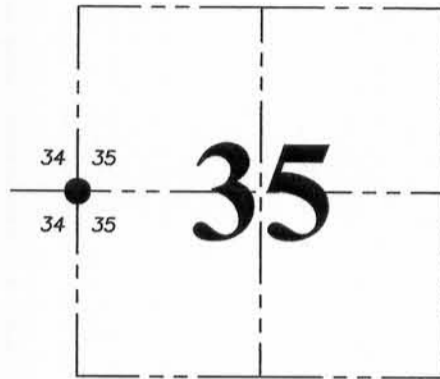
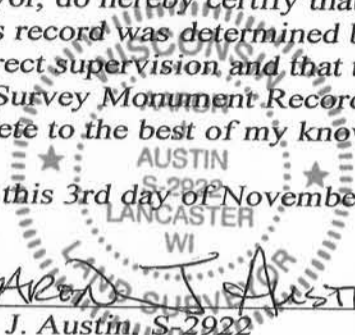
Section 35, Town 6 North Range 5 West, Town of Patch Grove

CERTIFICATE:

I, Aaron J. Austin, Wisconsin Professional Land Surveyor, do hereby certify that the corner location on this record was determined by me and/or under my direct supervision and that this U.S. Public Land Survey Monument Record is correct and complete to the best of my knowledge and belief.

Dated this 3rd day of November, 2015.

Aaron J. Austin
 Aaron J. Austin, S-2922



● = CORNER LOCATION

HISTORY OF CORNER ESTABLISHMENT:

1833-Parke set original corner.

1985-Douglas Malliet set a 3/4" Rebar at the corner on a Survey filed in Book O, Page 102.

1987-Ronald Hayden found the 3/4" Rebar and set 3 ties for the corner and prepared a Certified Land Corner record.

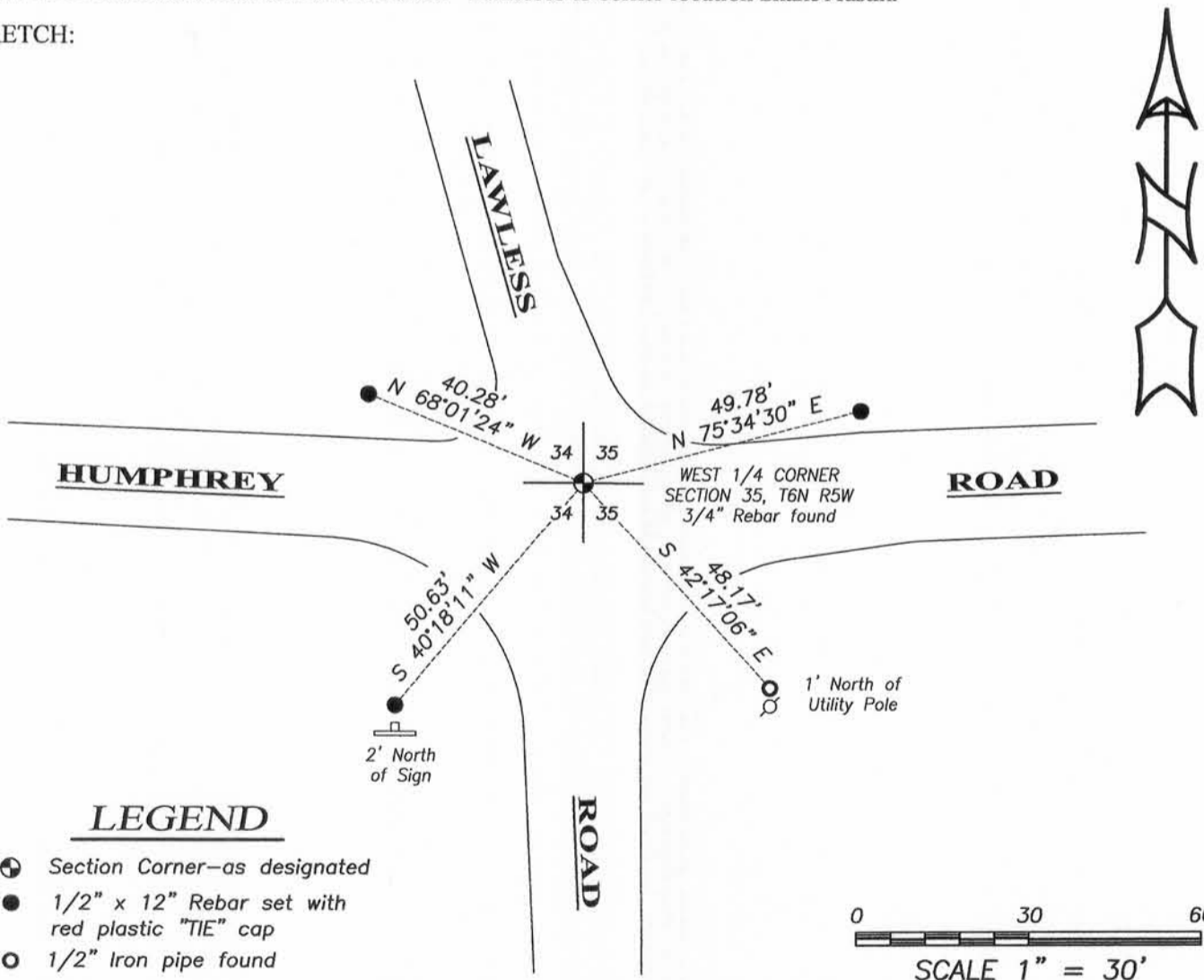
1997-Michael LaRosa found the 3/4" Rebar and set 3 new ties and filed a Survey Monument Record for the corner.

DESCRIPTION OF CORNER EVIDENCE FOUND:

I found the 3/4" Rebar set by Malliet and 1 witness corner as established by Micheal LaRosa. I set a 3 additional witness corners and verified this location with E.D.M. and G.P.S. methods.

DESCRIPTION OF CORNER AND WITNESS MONUMENTS, references and accessories used to perpetuate the original or re-established location of this corner. Witnesses to corner location Shane Austin.

SKETCH:



LEGEND

- ⊕ Section Corner—as designated
- 1/2" x 12" Rebar set with red plastic "TIE" cap
- 1/2" Iron pipe found

Austin Engineering LLC
 austinengineeringllc.com
 4211 HWY 81 E, LANCASTER, WI 53813
 PHONE: 608-723-6363 FAX: 608-723-6702

JOB NO: 15s217
 H:\CRD\15s217
 H:\TIE\T6NR5W\118

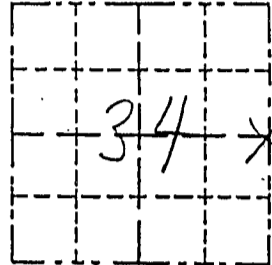
FIELDBOOK: TDSR
 DRAWN BY: AJ AUSTIN
 CREW: SW AUSTIN

REC'D SEP 5 1997

Survey Monument Record

TYPE OF MONUMENT FOUND 3/4" REBAR
STATE PLANE COORDINATES: N _____
E _____
ELEVATION — M.S.L. DATUM: _____
THETA ANGLE: _____
FIELD BOOK: 96-11
PAGE _____

CORNER NO. _____
SECTION 34
TOWN 6N
RANGE 5W



BASIS FOR MONUMENT LOCATION

(Use reverse side if necessary)

Show info such as: History of corner, with reference to Vol. and pg., dates, surveyor; exact description of monument replaced; if location computed, by taped or EDM traverse; landowner, remarks, etc.

LOCATION
(Indicated by "X")

- FOUND PERPETUATED LOCATION
- OBLITERATED EVIDENCE LOCATION
- LOST CORNER (RESTORED BY PROPORTIONATE METHODS)

Only 1 of the 3 local ties were found for this corner from a tie sheet dated 12/24/87 by Ronald Hayden. New ties were set as shown.



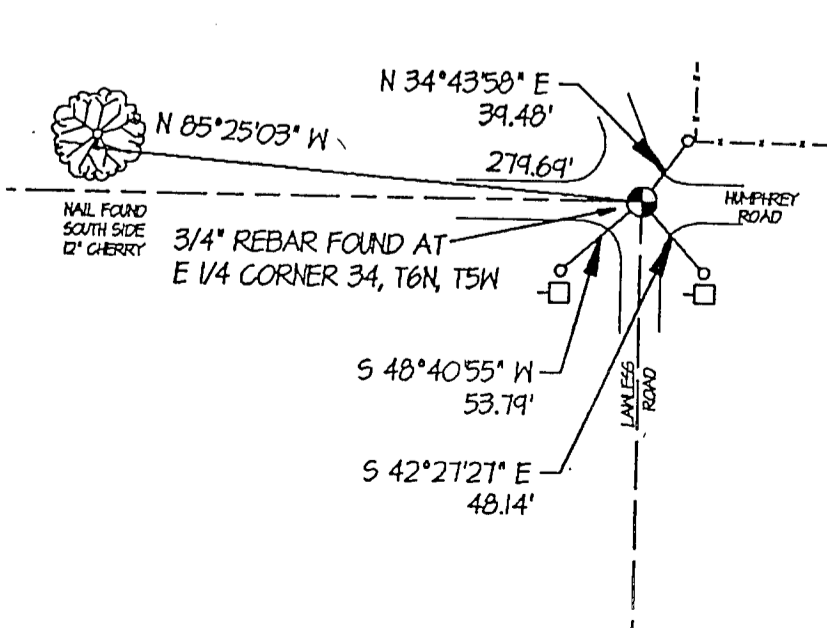
CERTIFIED CORRECT TO THE BEST OF MY KNOWLEDGE AND BELIEF

Michael R. LaRosa
Registered Land Surveyor

DATE: 8/7/1997

TIE SKETCH

Show at least (4) ties and monument



- LEGEND:
- 1"X24"X1.13 #/LF IRON PIPE SET
 - 1/2" DIA. IRON PIPE SET
 - 5/8" IRON ROD SET
 - ▲ IRON ROD FOUND
 - △ IRON PIPE FOUND
 - X- FENCE
 - () RECORDED AS NO MONUMENT PLACED
 - + NO MONUMENT PLACED
 - POWER POLE

CERTIFIED LAND CORNER

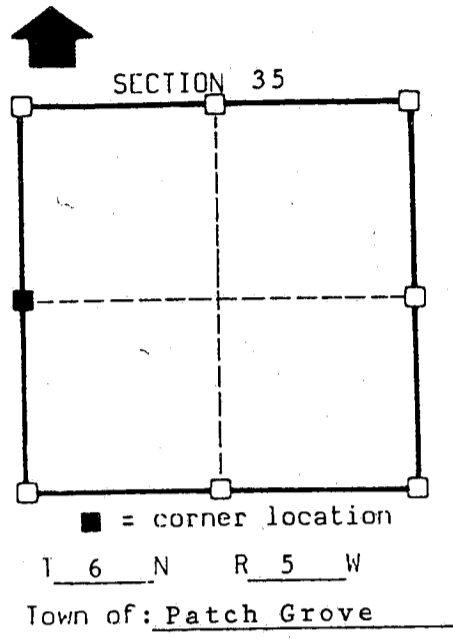
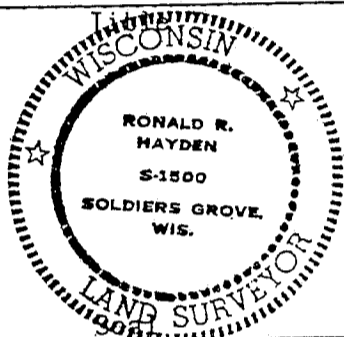
STATE OF WISCONSIN)
 COUNTY OF GRANT) S.S.

CERTIFICATE

I, Ronald R. Hayden, do hereby certify that on the 8th day of December 1987, I found (evidence) (~~no evidence~~) of the W 1/2 corner of Section 35, T 6 N, R 5 W, Fourth Principal Meridian, and I re-established said corner according to the Wisconsin Statutes as shown and described hereon.

Dated this 21 day of December 1987

Ronald R. Hayden

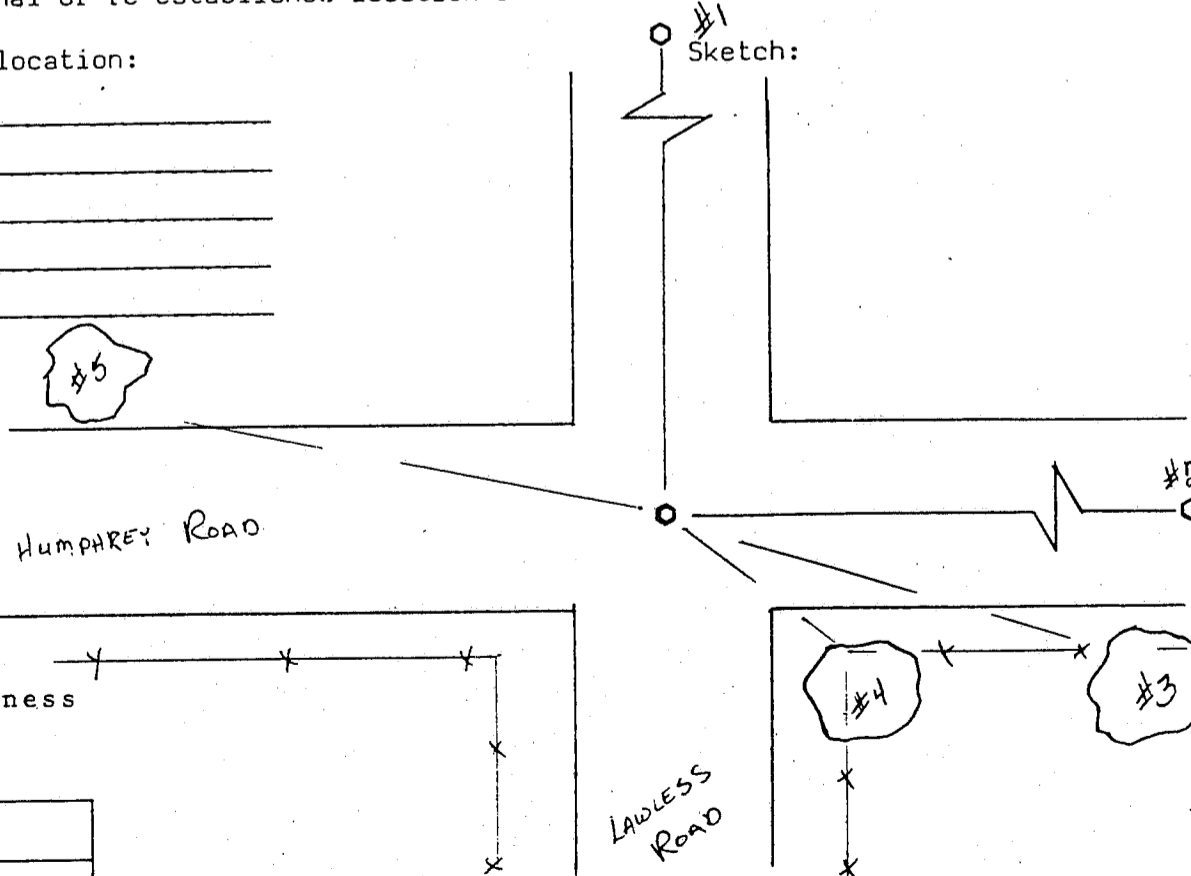


History of original corner establishment:
 Town lines established by Lucious Lyon.
 Subdivision by Harvey Parke in 1833.

Description of corner evidence found: Found a 3/4 inch iron bar set by Burbach Engineering.

Description of corner and witness monuments, references and accessories used to perpetuate the original or re-established location of this corner:

Witnesses to corner location:
Ronald R. Hayden
Carol S. Hayden



See back for witness description.

Corner	East (X)	North (Y)	Elevation (Z)	Zone
Control Sta. Name				

WITNESS DESCRIPTIONS

- 1) Northwest corner of Section 35, a 3/4" X 30" round iron bar, which bears: N 00° 48' 45" E 2661.65'.
- 2) East one quarter corner of Section 35, a railroad spike, which bears: S 88° 51' 36" E 5315.39'.
- 3) PK Nail set in North root of a 2.5' diameter white spruce pine tree which bears: S 78° E 139.02'.
- 4) PK Nail set in North root of a 2.5' diameter white spruce pine tree which bears: S 50° E 55.13'.
- 5) Spike nail set in the south side of a 1.0' diameter black cherry tree which bears: N 89° W 279.81'.