

U.S. PUBLIC LAND SURVEY MONUMENT RECORD

Section 34, Town 6 North Range 5 West, Town of Patch Grove, Grant County, Wisconsin

CERTIFICATE

I, Larry L. Austin, do hereby certify that the corner location on this record was determined by me and/or under my direct supervision and that this U.S. public land survey monument record is correct and complete to the best of my knowledge and belief.

Larry L. Austin
Larry L. Austin, S-1903



2.18.11
date



● = CORNER LOCATION

HISTORY OF CORNER

Corner was originally set in 1832 by Harvey Parke. No other record of the corner was found.

CORNER EVIDENCE FOUND

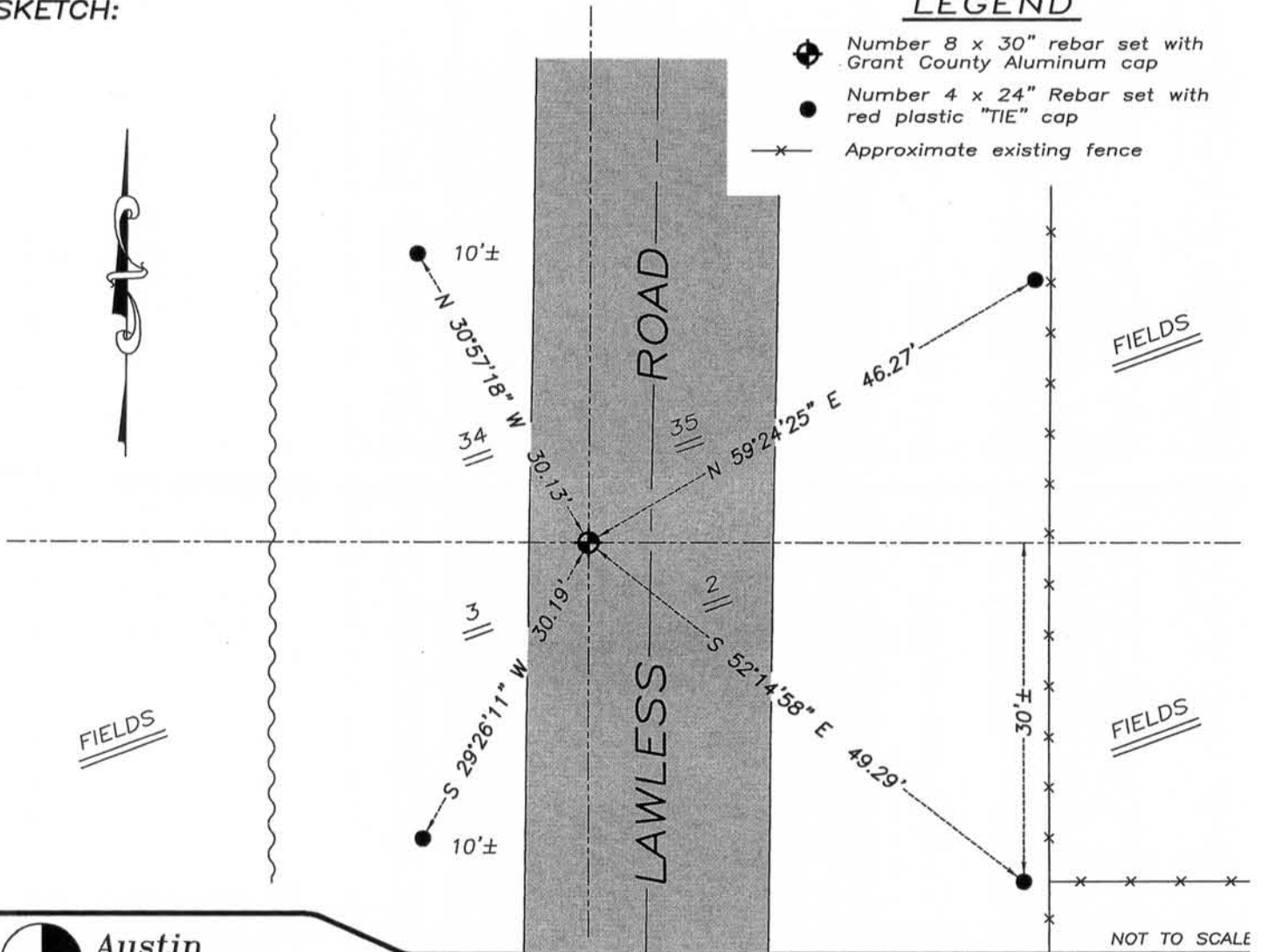
I set the corner by doubling over occupation East along the South line of the Southeast Quarter. Verified this location to adjoining occupied and monumented corners using EDM & GPS methods.

DESCRIPTION OF CORNER AND WITNESS MONUMENTS, references and accessories used to perpetuate the original or reestablished location of this corner. Witnesses to monument location Bobby Sedgwick & Brad Digman & Shane Austin

SKETCH:

LEGEND

- ⊕ Number 8 x 30" rebar set with Grant County Aluminum cap
- Number 4 x 24" Rebar set with red plastic "TIE" cap
- x— Approximate existing fence



Austin Engineering LLC

4211 HWY 81 E, LANCASTER, WI 53813
PHONE 608-723-6363 FAX 608-723-6702

JOB NUMBER 09S115-MORAVITS
FIELDBOOK: TDSR, 2812
G:\T6NR5W\34
H:\TIE\T6NR5W\125

DRAWN BY: SW AUSTIN
APPROVED: LL AUSTIN

125

FEB 23 2011