

**U.S. PUBLIC LAND SURVEY MONUMENT RECORD - GRANT COUNTY, WI**

Section 33, Town 6 North Range 5 West, Town of Patch Grove (a)

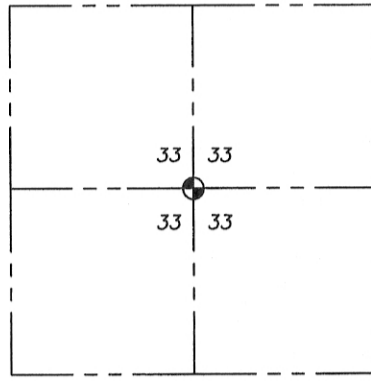
NOTE: This form is intended and designed to fulfill all requirements of the Wisconsin Administrative Code Chapter A-E 7.08, U.S. Public Land Survey Monument Record (3) (a) (b) (c) (d) (e) (f) (g) (h) (i).

**CERTIFICATE: (i)**

I, Aaron J. Austin, Wisconsin Professional Land Surveyor, do hereby certify that the corner location on this record was determined by me and/or under my direct supervision and that this U.S. Public Land Survey Monument Record is correct and complete to the best of my knowledge and belief.

Dated this 10th day of August, 2016.

*Aaron J. Austin*  
 Aaron J. Austin



● = CORNER LOCATION

Grant County Coordinates:  
 NAD 83 (2011) WISCORS  
 Northing: 561,866.24  
 Easting: 748,806.46

**HISTORY OF CORNER ESTABLISHMENT:**

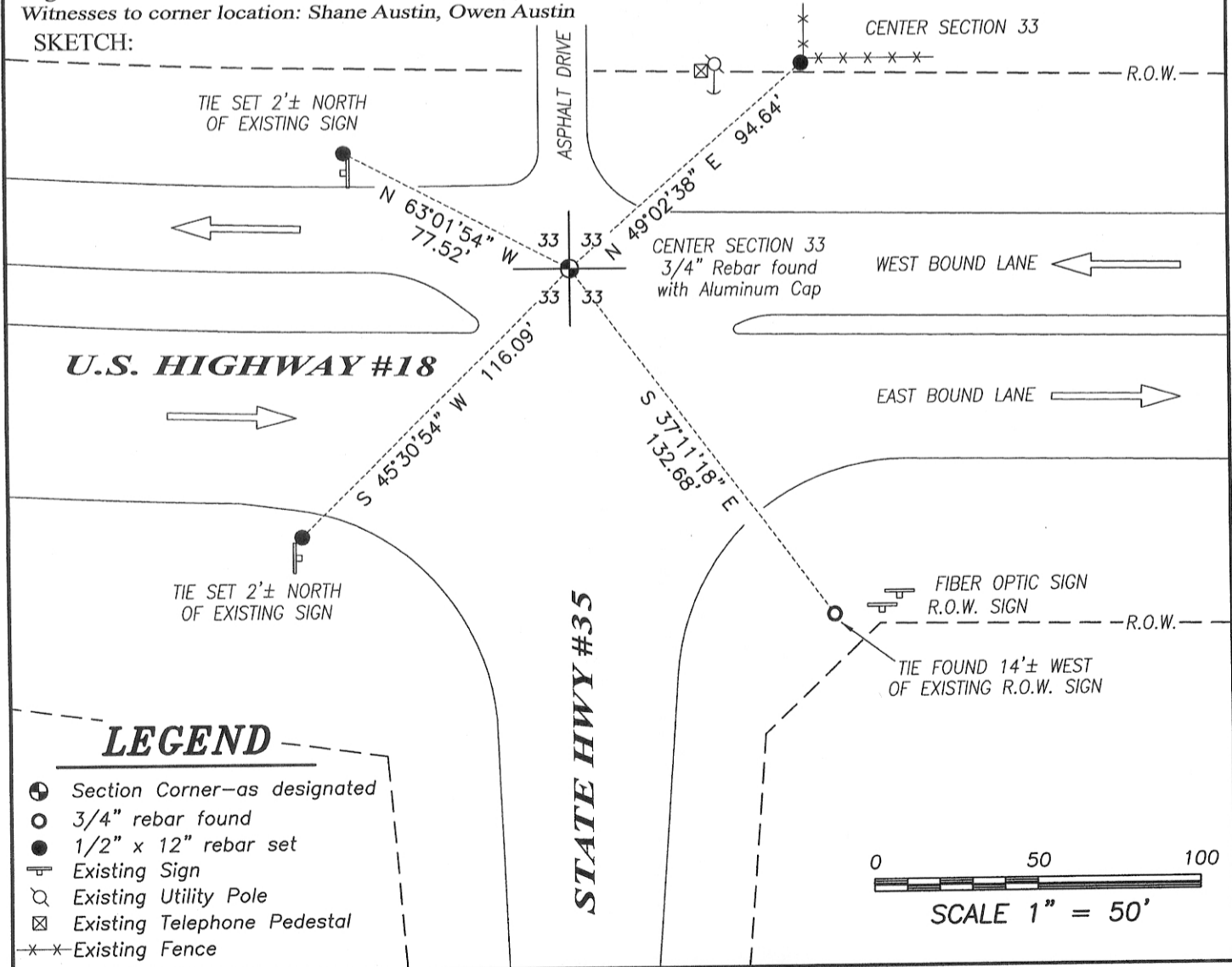
- Corner was not set with Original Government Survey.
- 1959-John Strand tied to the corner on a Survey filed as GCA 431.
- 1974-Homer Ralph Jr. tied to the corner on a Survey filed in Book F, Page 276.
- 1987-Timothy Moore reset the corner and prepared a U.S. Public Land Survey Monument Record.
- 1993-Larry Austin tied to the corner on a Survey filed in Book S, Page 69.
- 1997-Larry Austin tied to the corner on a Survey filed in Book Z, Page 37.
- 1999-Stan King tied to the corner on a Survey filed in Book 5, Page 15.
- 2002-Larry Austin tied to the corner on a Survey filed in Book 11, Page 7.
- 2003-Larry Austin tied to the corner on a Survey filed in Book 12, Page 58.
- 2003-Larry Austin tied to the corner on a Survey filed in Book 14, Page 27.
- 2004-Larry Austin tied to the corner on Certified Survey Map No. 1067.
- 2005-Larry Austin tied to the corner on a Survey filed in Book 18, Page 69.

**DESCRIPTION OF CORNER EVIDENCE FOUND: (b) (f) (g) (h)**

I found the rebar with an Aluminum Cap at the corner location as established by Timothy Moore and I found one witness corner. I set three additional witness corners after I verified it's location. County Coordinates were established using G.P.S. observation NAD 83 (2011) WISCORS.

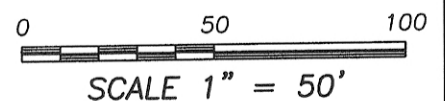
**DESCRIPTION OF CORNER AND WITNESS MONUMENTS, references and accessories used to perpetuate the original or re-established location of this corner. (c) (d) (e)**

Witnesses to corner location: Shane Austin, Owen Austin  
 SKETCH:



**LEGEND**

- Section Corner—as designated
- 3/4" rebar found
- 1/2" x 12" rebar set
- ⊥ Existing Sign
- ⊙ Existing Utility Pole
- ⊠ Existing Telephone Pedestal
- \*- Existing Fence

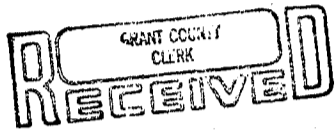


# U. S. PUBLIC LAND SURVEY MONUMENT RECORD

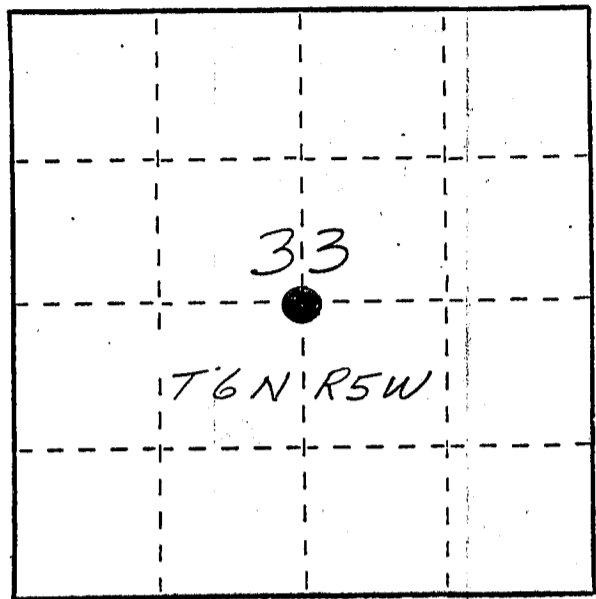
**INSTRUCTIONS:** This record shall show the location of the corner and shall include all of the following nine elements (a through i).

- (a) Identify the corner by reference to the U.S. public land survey system.
- = Corner monument restored.

C.O.S. 33 T6N R5W  
of the 4th P.M.  
Town of Patch Grove  
Grant County, Wisconsin.



MAR 2 1988

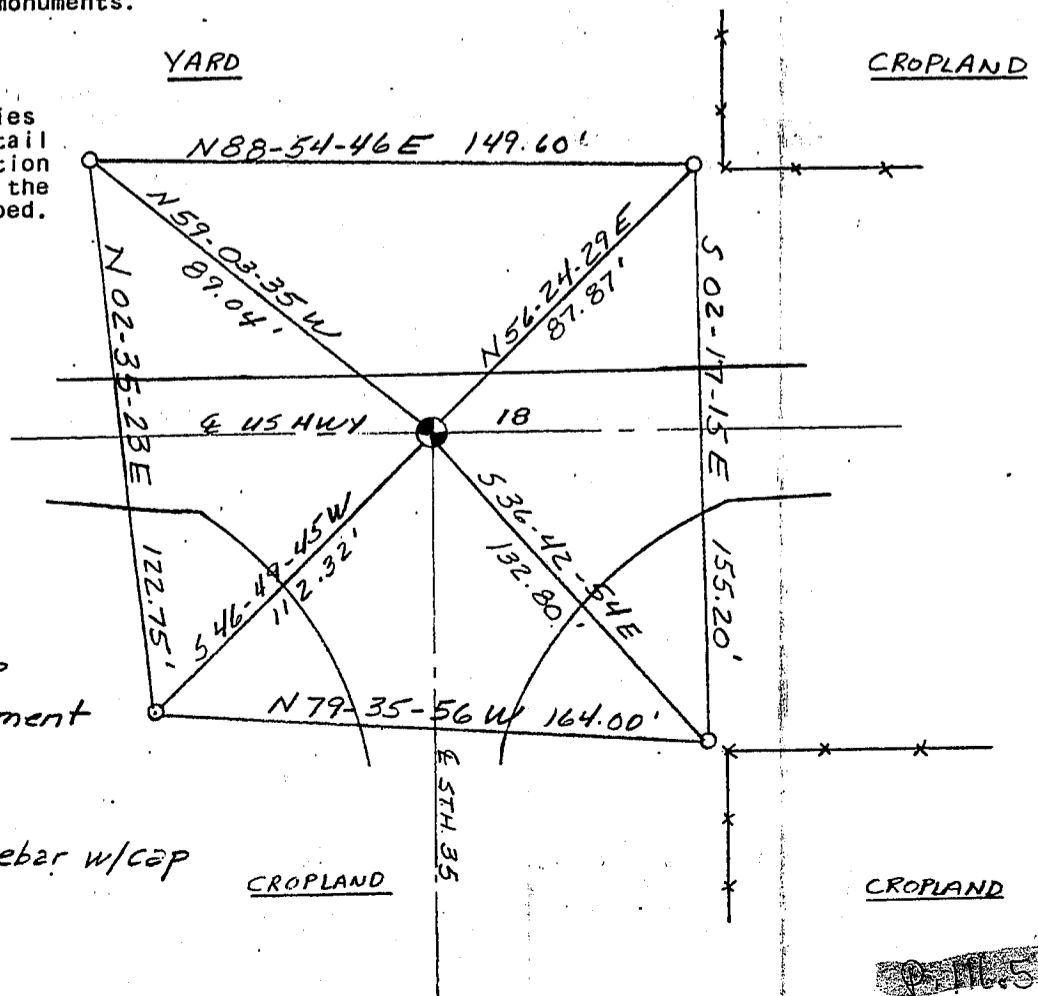


- (b) Describe any record evidence, monument evidence, occupational evidence, testimonial evidence or any other material evidence you considered, and whether the monument was found or placed.

Monument was set at a PK nail found at the centerlines of US HWY 18 and S.T.H. 35. This PK nail was referenced to in a 1974 survey done by Homer D. Ralph, Jr. for Charles Finn. This location is also in agreement with the Hwy. R.O.W plat for Division Job No. 9572-A, 1941. Research revealed that the C.O.S had never been previously set.

- (c) In the plan view drawing below, provide reference ties to at least 4 witness monuments, or, if the location is within a municipality, to at least 2 witness monuments. (Witness monuments shall be made of concrete, natural stone, iron or other equally durable material, ~~except wood.~~) Describe witness monuments.

- (d) Show a plan view drawing depicting the relevant monuments and reference ties which is sufficient in detail to enable accurate relocation of the corner monument if the corner monument is disturbed. Indicate north.



No Scale

BEARINGS - WIS GRID

- - 3/4" x 24" rebar w/cap set just below pavement
- - Ref. mons. - 3/4" x 24" rebar w/cap

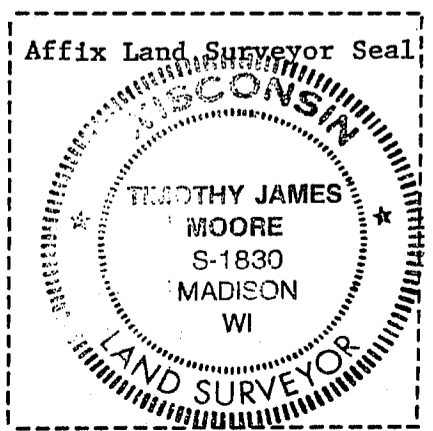
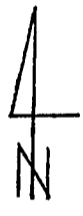
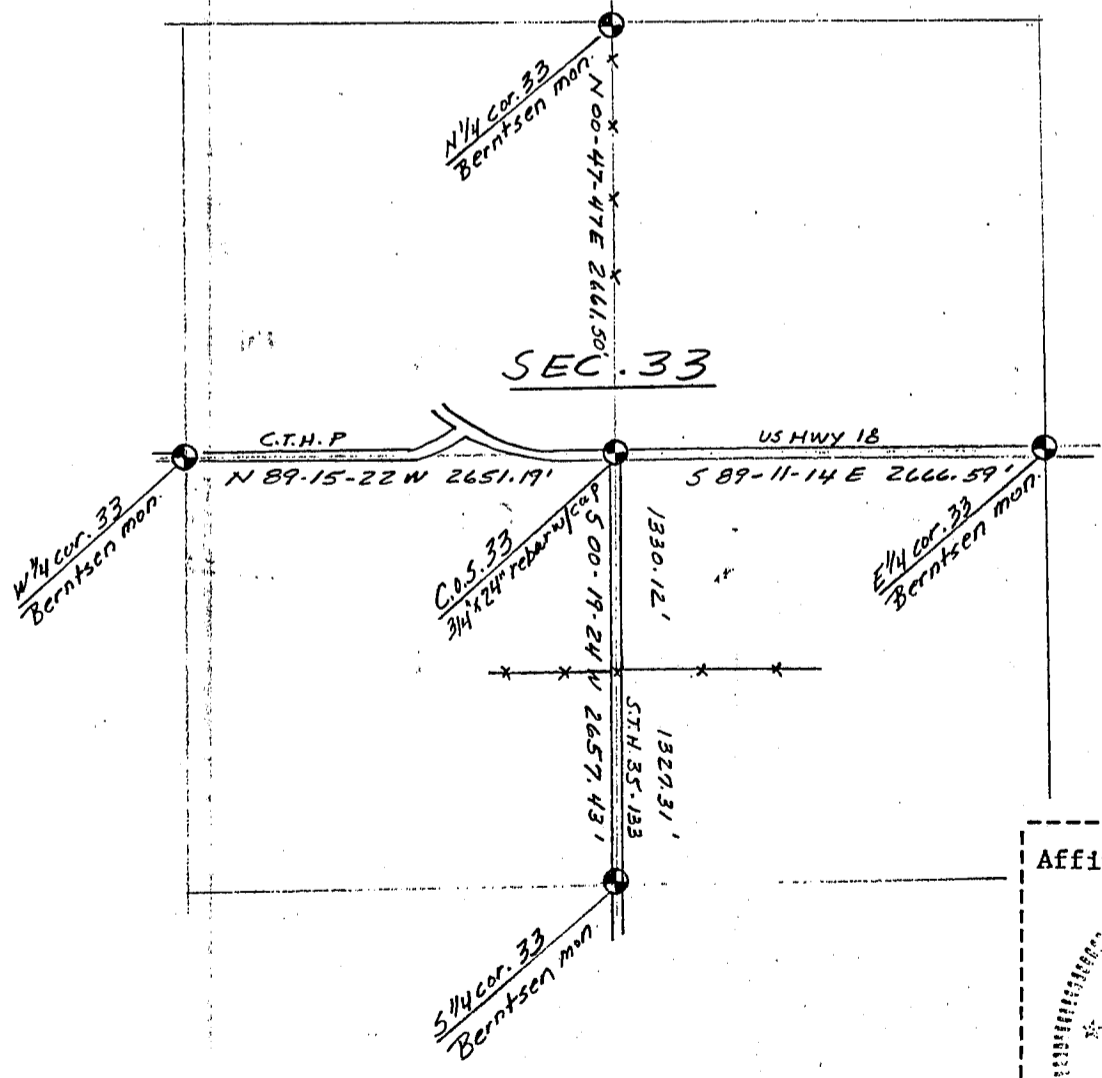
116.51

(e) Describe any material discrepancy between the location of the corner as restored or reestablished and the location of that corner as previously restored or reestablished by distance and direction. Show the discrepancy on the plan view drawing under (d), above. Show the distances between the corner as previously restored or reestablished and (1) the corner as restored or reestablished, and (2) to at least 2 of the witness monuments shown on the drawing in (d), above.

(f) Was the corner restored through acceptance of (1) an obliterated evidence location, or, (2) a found perpetuated location?

(g&h) Was the corner reestablished through lost corner proportionate methods? If so, show the method, including the directions and distances to other public land survey corners used as evidence or used for proportioning in determining the corner location?

No - The PK nail replaced appears to have been set according to occupational evidence (roads East, west, and South and fence line north). Calculations would eliminate the quarter corner, quarter corner line intersections and the equi-distant methods.



(i) I, Timothy J. Moore  
 (type or print name) certify that the corner location shown on this record was determined by me or under my direction and control and that this U.S. Public Land Survey Monument Record is correct and complete to the best of my knowledge and belief.

Timothy J. Moore Signature      10-21-87 Date