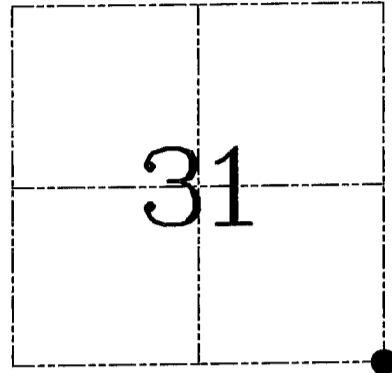
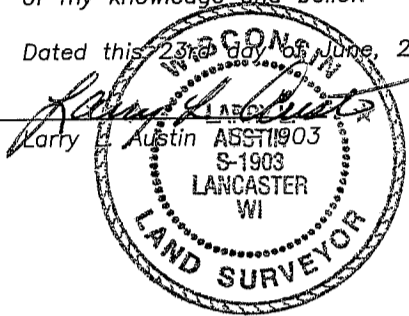


**U.S. PUBLIC LAND SURVEY MONUMENT RECORD – GRANT COUNTY, WI**  
**Section 31, Town 6 North Range 5 West, Town of Patch Grove**

CERTIFICATE

I, Larry L. Austin, do hereby certify that the corner location on this record was determined by me and/or under my direct supervision and that this U.S. public land survey monument record is correct and complete to the best of my knowledge and belief.

Dated this 23<sup>rd</sup> day of June, 2005



● = CORNER LOCATION

HISTORY OF CORNER ESTABLISHMENT

Corner was originally set in 1832 by Sibley. In 1894 Sampson measured to the corner. No other record of the corner was found.

DESCRIPTION OF CORNER EVIDENCE FOUND

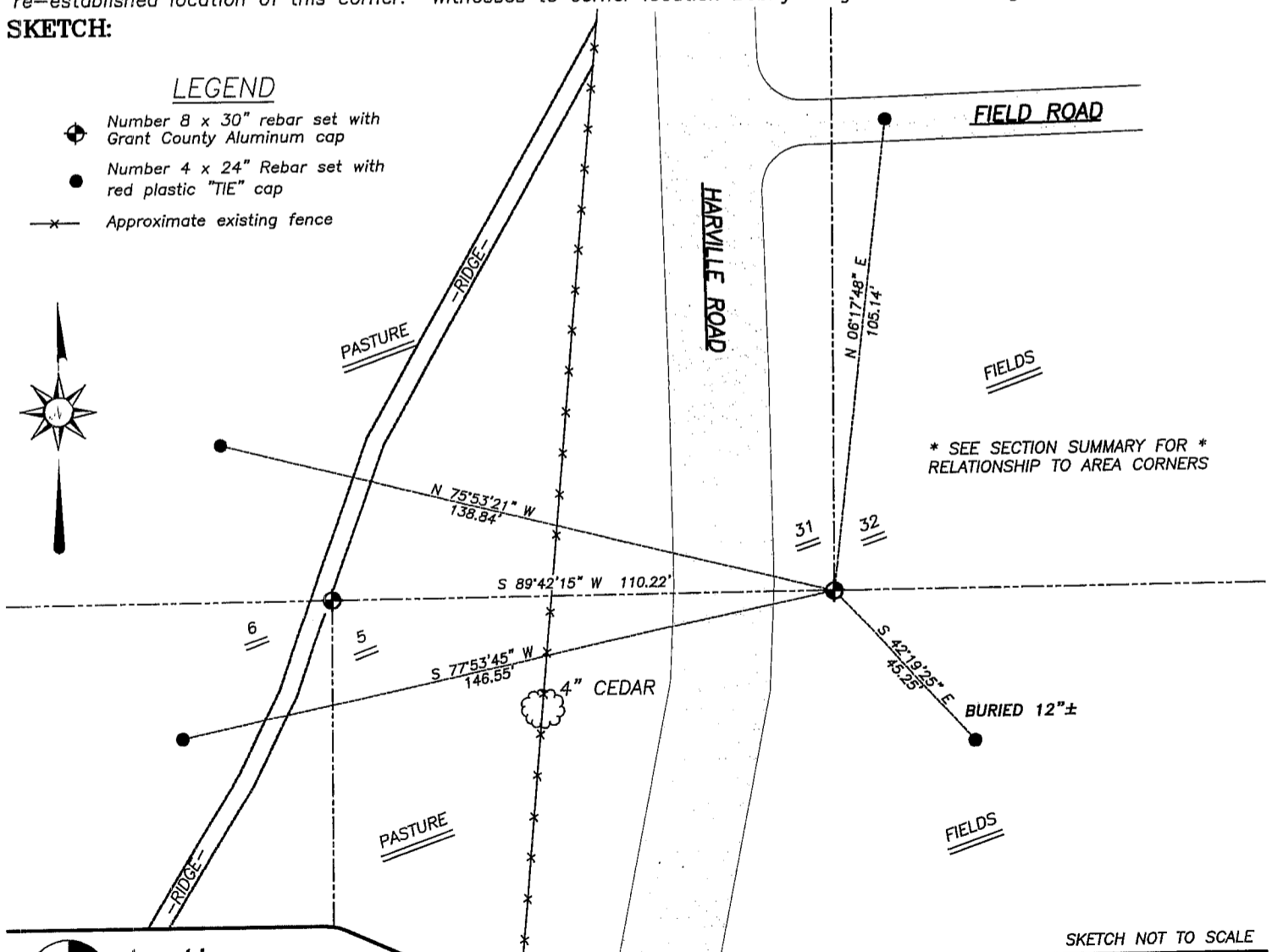
I reset the corner proportionately between the Southwest corner of Section 1 and the occupied South 1/4 of Section 32. Verified this location using EDM & GPS methods.

DESCRIPTION OF CORNER AND WITNESS MONUMENTS, references and accessories used to perpetuate the original or re-established location of this corner. Witnesses to corner location Bobby Sedgwick & Brad Digman & Shane Austin

**SKETCH:**

LEGEND

- Number 8 x 30" rebar set with Grant County Aluminum cap
- Number 4 x 24" Rebar set with red plastic "TIE" cap
- x- Approximate existing fence



SKETCH NOT TO SCALE



**Austin Engineering LLC**

4211 HWY 81 E, LANCASTER, WI 53813  
 PHONE 608-723-6363 FAX 608-723-6702

JOB NUMBER 05S168  
 FIELDBOOK: TDSR, 2516  
 G:\T5NR6W\01  
 H:\TIE\T5NR5W\131

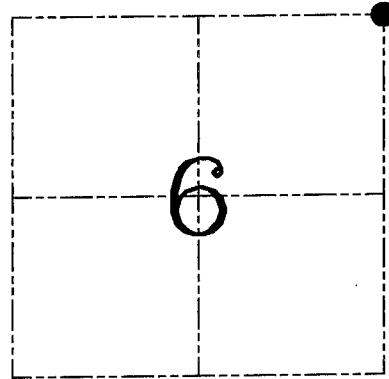
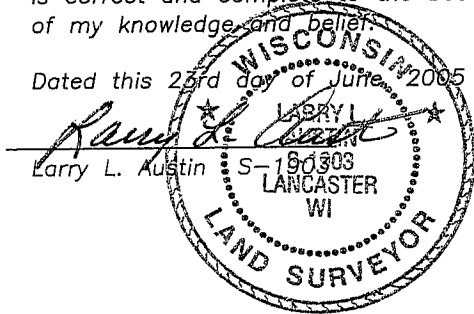
DRAWN BY: BJ HAZEN  
 APPROVED: LL AUSTIN

**U.S. PUBLIC LAND SURVEY MONUMENT RECORD – GRANT COUNTY, WI**  
**Section 6, Town 5 North Range 5 West, Town of Patch Grove**

CERTIFICATE

I, Larry L. Austin, do hereby certify that the corner location on this record was determined by me and/or under my direct supervision and that this U.S. public land survey monument record is correct and complete to the best of my knowledge and belief.

Dated this 25<sup>th</sup> day of June 2005



● = CORNER LOCATION

HISTORY OF CORNER ESTABLISHMENT

Corner was originally set in 1832 by Clark. Sampson measured to the corner in 1894 and set a rock.

DESCRIPTION OF CORNER EVIDENCE FOUND

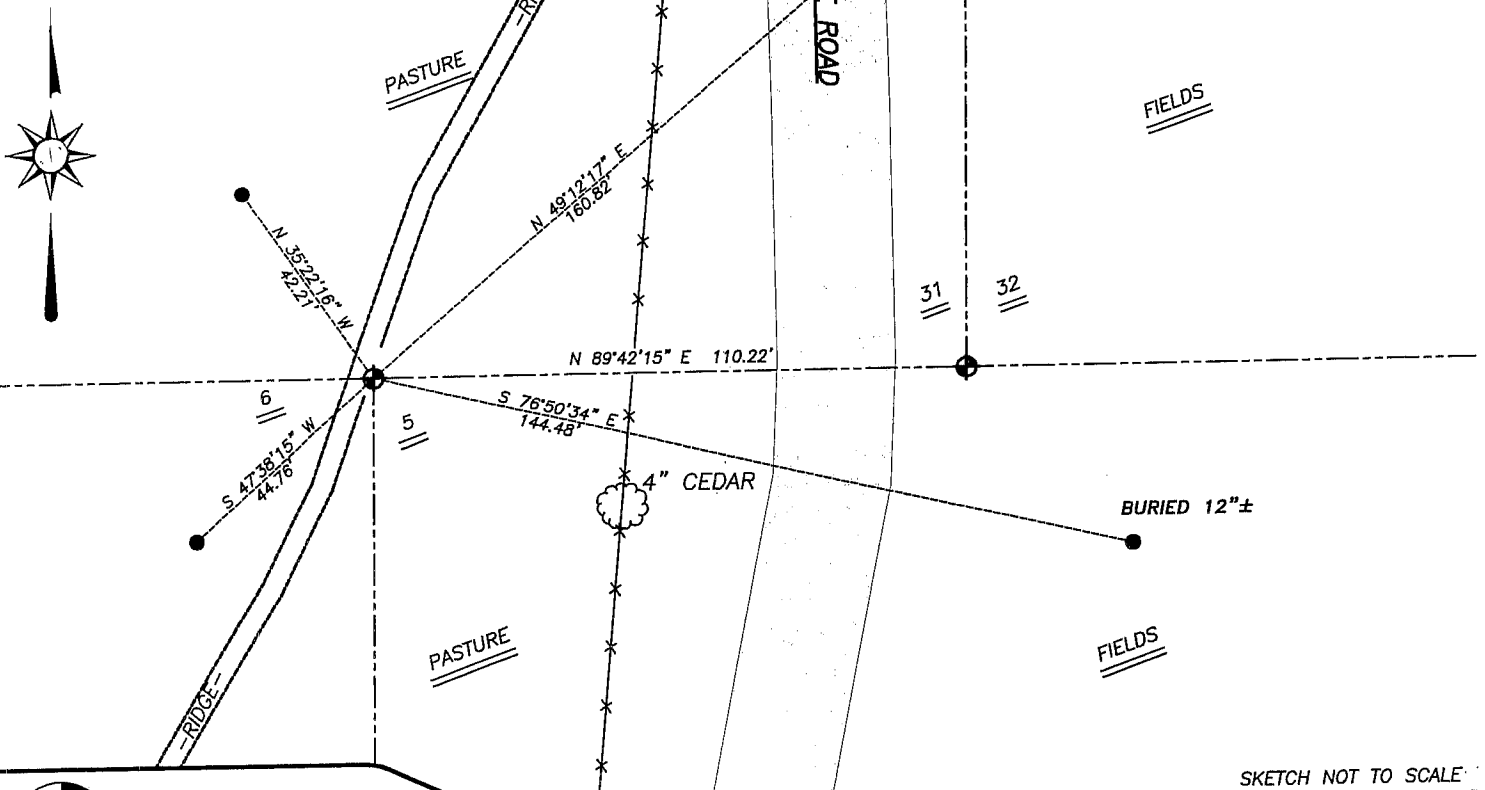
I was unable to locate the rock. I reset the corner at the recorded offset from the Southeast corner of Section 31, T6N R5W. Verified this location using EDM & GPS methods.

DESCRIPTION OF CORNER AND WITNESS MONUMENTS, references and accessories used to perpetuate the original or re-established location of this corner. Witnesses to corner location Bobby Sedgwick & Brad Digman & Shane Austin

**SKETCH:**

LEGEND

- Number 8 x 30" rebar set with Grant County Aluminum cap
- Number 4 x 24" Rebar set with red plastic "TIE" cap
- Approximate existing fence



SKETCH NOT TO SCALE



**Austin Engineering LLC**

4211 HWY 81 E, LANCASTER, WI 53813  
 PHONE 608-723-6363 FAX 608-723-6702

JOB NUMBER 05S168  
 FIELDBOOK: TDSR, 2516  
 G:\T5NR6W\01  
 H:\TIE\T5NR5W\11

DRAWN BY: BJ HAZEN  
 APPROVED: LL AUSTIN