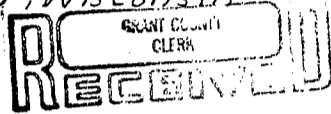


# U. S. PUBLIC LAND SURVEY MONUMENT RECORD

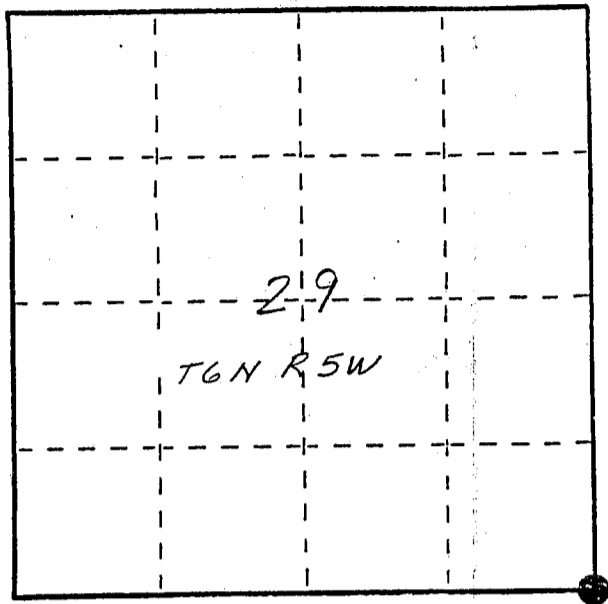
INSTRUCTIONS: This record shall show the location of the corner and shall include all of the following nine elements (a through i).

- (a) Identify the corner by reference to the U.S. public land survey system.  
 ● = Corner monument restored.

SE corner section 29 T6N R5W  
 of the 4th P.M.  
 Town of Patch Grove  
 Grant County, Wisconsin

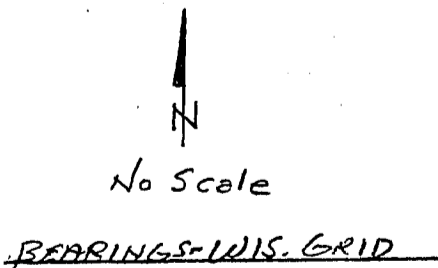


MAR 2 1988



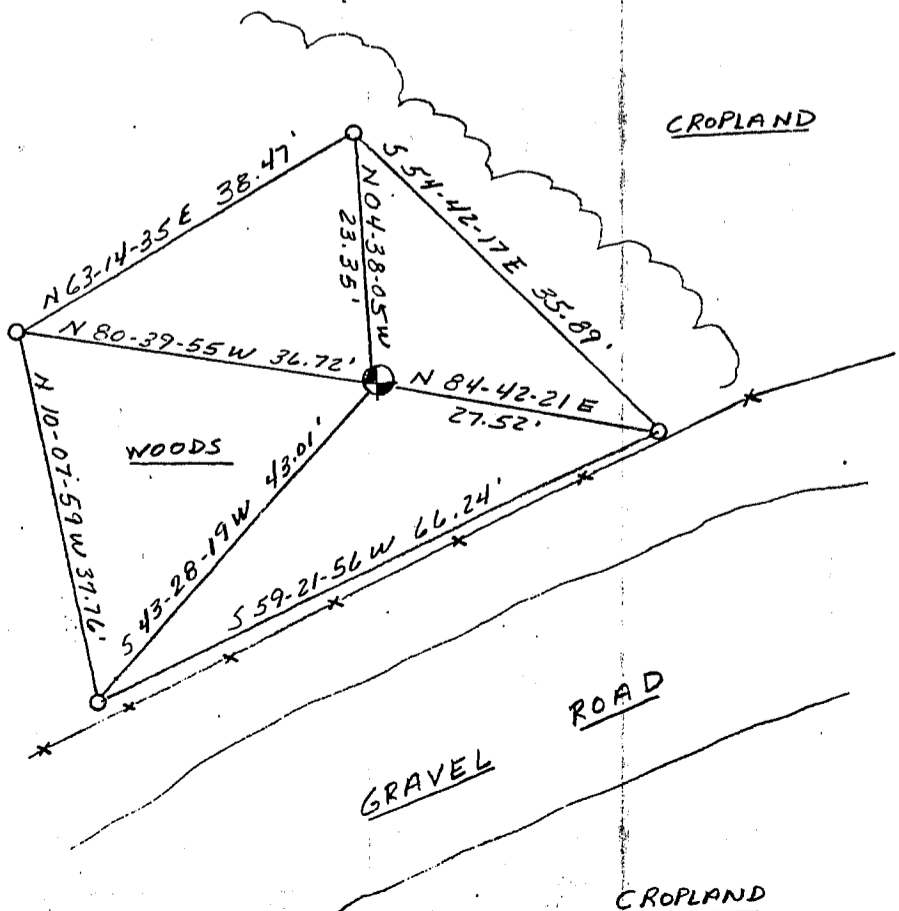
- (b) Describe any record evidence, monument evidence, occupational evidence, testimonial evidence or any other material evidence you considered, and whether the monument was found or placed.  
*Monument was set using Mr Finn's (landowner & lifelong resident) comments about surveys done in years past in the area, and a 1" I.P. found on a N-S fence line south of the corner. Mr. Finn pointed to a steel "I" beam that he said was set on the south line of said section 29. He walked the area with us and stood in the general area in which he remembered corner post to be. No bearing trees found*
- (c) In the plan view drawing below, provide reference ties to at least 4 witness monuments, or, if the location is within a municipality, to at least 2 witness monuments. (Witness monuments shall be made of concrete, natural stone, iron or other equally durable material, ~~except wood.~~) Describe witness monuments.

- (d) Show a plan view drawing depicting the relevant monuments and reference ties which is sufficient in detail to enable accurate relocation of the corner monument if the corner monument is disturbed. Indicate north.



● - Berntsen A-1 monument set 0.1' below grade

○ - Ref. mons. - 3/4" x 24' rebar w/cap

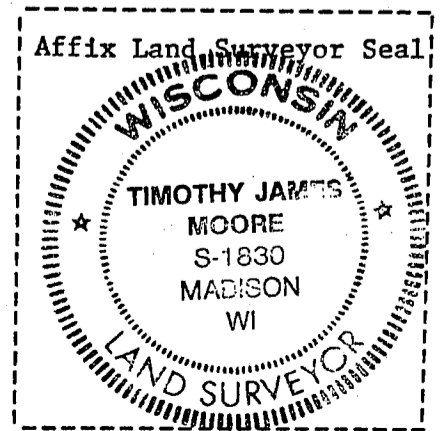
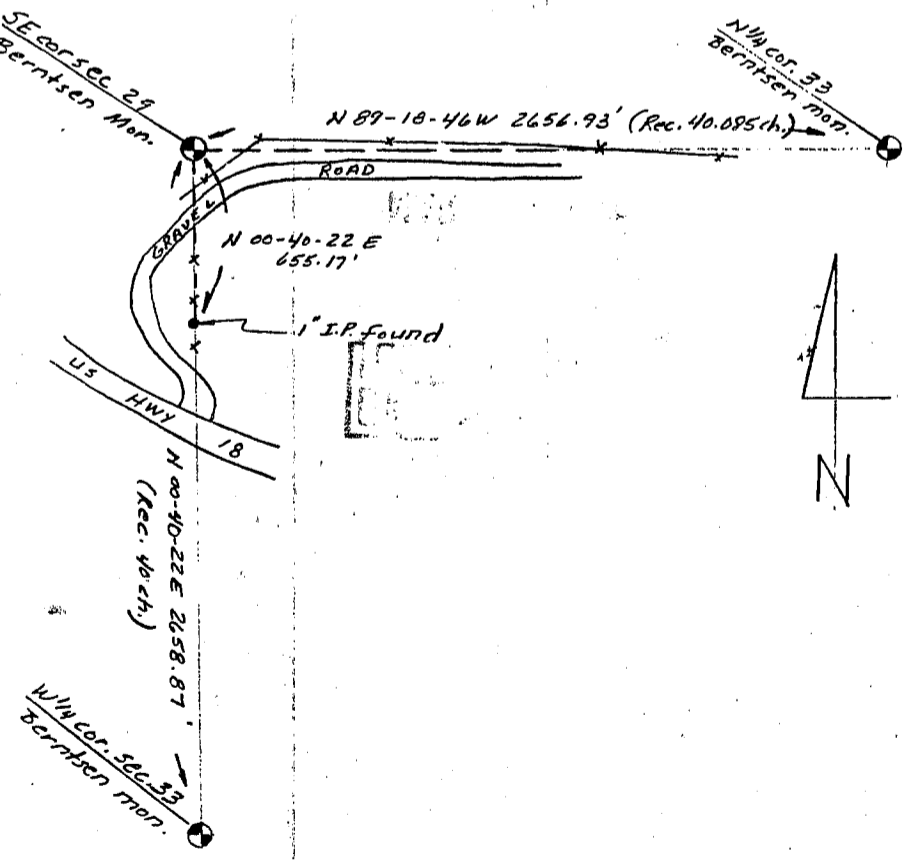


(e) Describe any material discrepancy between the location of the corner as restored or reestablished and the location of that corner as previously restored or reestablished by distance and direction. Show the discrepancy on the plan view drawing under (d), above. Show the distances between the corner as previously restored or reestablished and (1) the corner as restored or reestablished, and (2) to at least 2 of the witness monuments shown on the drawing in (d), above.

(f) Was the corner restored through acceptance of (1) an obliterated evidence location, or, (2) a found perpetuated location?

(g&h) Was the corner reestablished through lost corner proportionate methods? If so, show the method, including the directions and distances to other public land survey corners used as evidence or used for proportioning in determining the corner location?

Monument was set by extending line westerly from reestablished N<sup>1</sup>/<sub>4</sub> corner of section 33-6-5 through "I" beam pointed out to us by Mr. Finn and intersecting that line with a line extending northerly from the reestablished W<sup>1</sup>/<sub>4</sub> corner of said section 33 through a 1" IP found on a N-S fence line that Mr. Finn said was on the true line. Corner location fell in that general area pointed out by Mr. Finn.



(1) I, Timothy J. Moore  
(type or print name) certify that the corner location shown on this record was determined by me or under my direction and control and that this U.S. Public Land Survey Monument Record is correct and complete to the best of my knowledge and belief.

Signature Timothy J. Moore Date 10-20-87