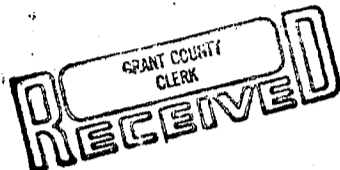


U. S. PUBLIC LAND SURVEY MONUMENT RECORD

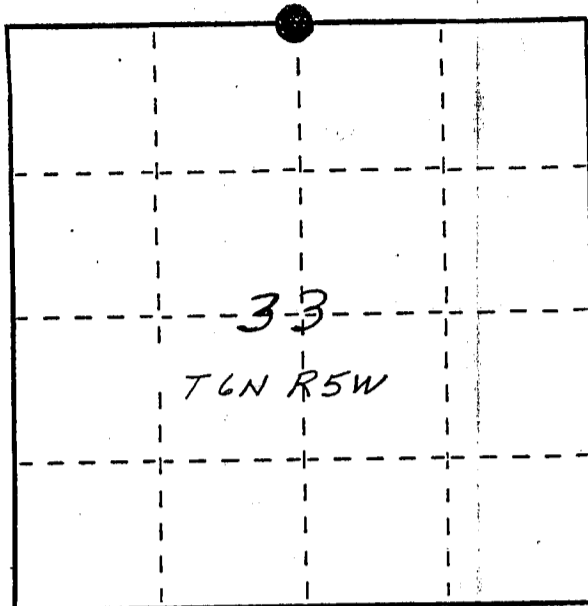
INSTRUCTIONS: This record shall show the location of the corner and shall include all of the following nine elements (a through i).

- (a) Identify the corner by reference to the U.S. public land survey system.
 ● = Corner monument restored.

*N 1/4 corner section 33 T6N R5W
 of the 4th P.M.
 Town of Patch Grove
 Grant County, Wisconsin*



MAR 2, 1988

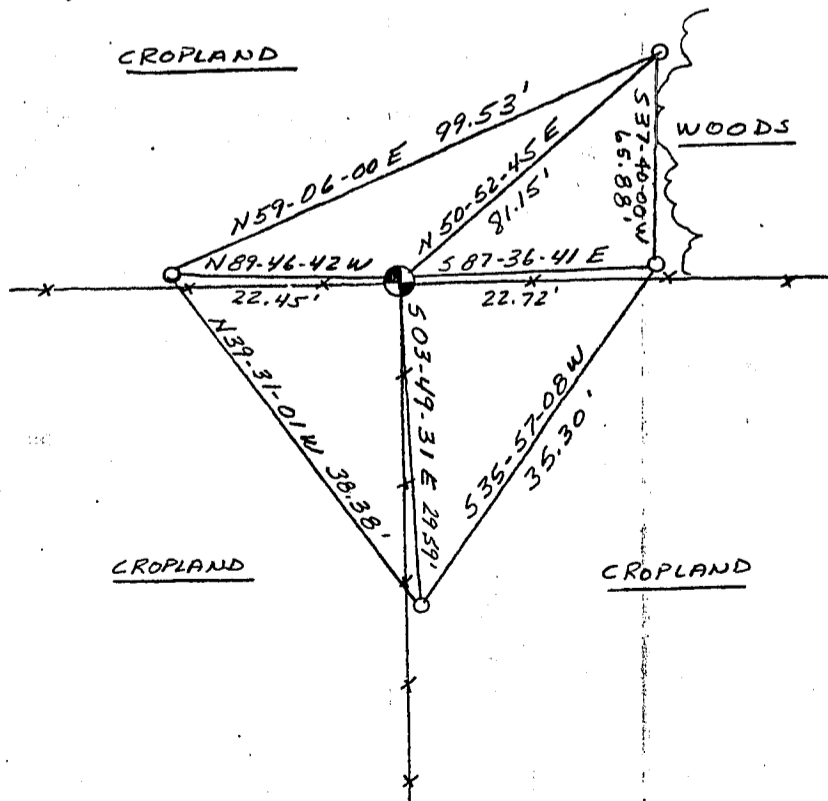


- (b) Describe any record evidence, monument evidence, occupational evidence, testimonial evidence or any other material evidence you considered, and whether the monument was found or placed.

Monument was set at existing fence corner where Mr. Finn (landowner & life long resident) said true corner was suppose to be. Distances to reestablished NE and NW corners of said section 33 are in acceptable agreement with original survey notes. No original bearing trees were found.

- (c) In the plan view drawing below, provide reference ties to at least 4 witness monuments, or, if the location is within a municipality, to at least 2 witness monuments. (Witness monuments shall be made of concrete, natural stone, iron or other equally durable material, ~~except wood.~~) Describe witness monuments.

- (d) Show a plan view drawing depicting the relevant monuments and reference ties which is sufficient in detail to enable accurate relocation of the corner monument if the corner monument is disturbed. Indicate north.



No Scale

BEARINGS - WIS. GRID

⊕ - Berntsen A-1 monument set 0.1' below grade.

○ - Ref. marks - 3/4" x 24" rebar w/caps

P. O. S. A.

