



JAN 12 1995

CERTIFIED LAND CORNER

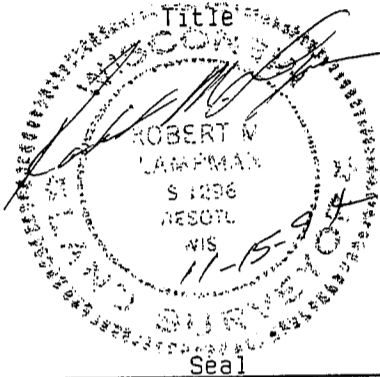
STATE OF WISCONSIN)
COUNTY OF GRANT) S.S.

CERTIFICATE

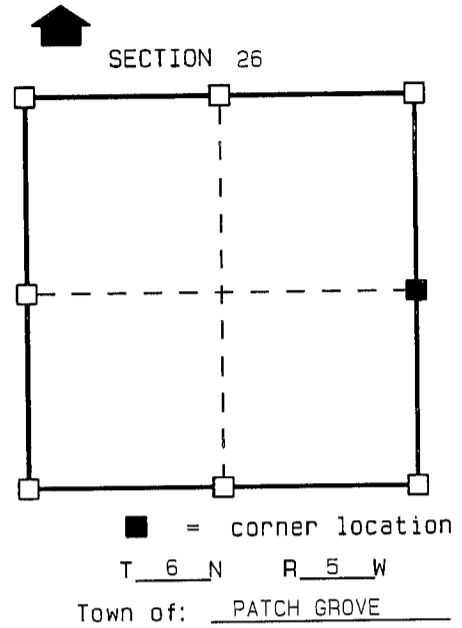
I, ROBERT M. LAMPMAN, do hereby certify that on the 15th day of NOVEMBER 1994, I found (~~evidence~~) (no evidence) of the E 1/4 corner of SECTION 26, T 6 N, R 5 W, Fourth Principal Meridian, and I re-established said corner according to the Wisconsin Statutes as shown and described hereon.

Dated this 15th day of NOVEMBER 1994

ROBERT M. LAMPMAN R.L.S. S-1296



Seal



History of original corner establishment:
ORIGINAL CORNER ESTABLISHED BY ORSON LYON IN 1840.

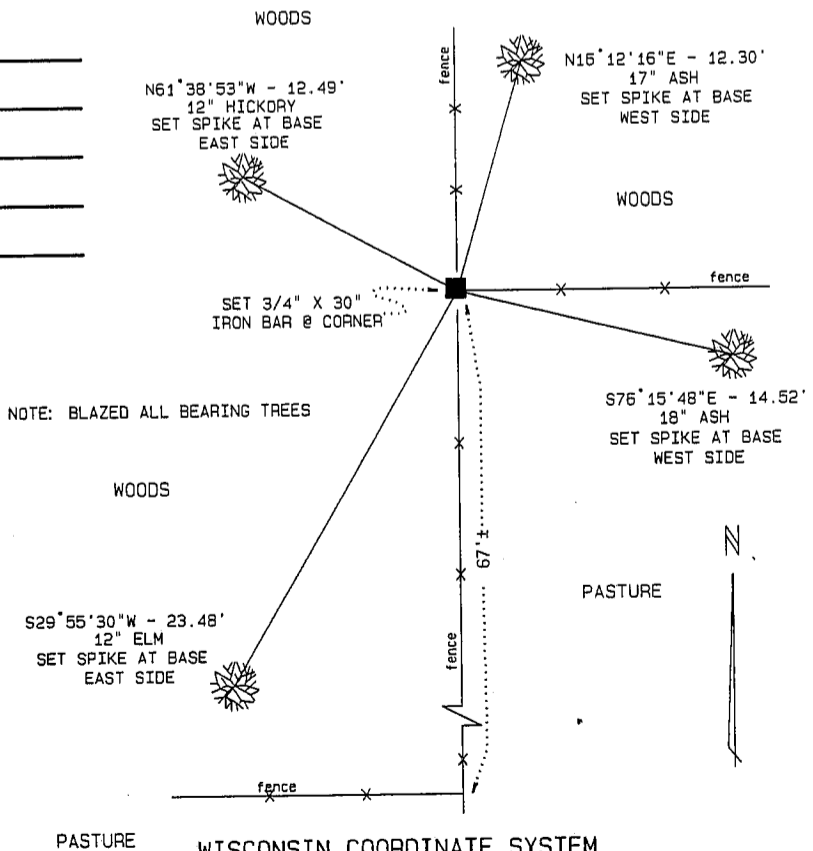
Description of corner evidence found:
USED OCCUPATIONAL EVIDENCE AND EXISTING MONUMENTS AROUND AND THROUGHOUT SECTION 26 TO ESTABLISH CORNER LOCATION. CORNER FITS ORIGINAL CALL OF 2640' FROM THE NE CORNER OF SECTION 26 AS PREVIOUSLY ESTABLISHED.

Description of corner and witness monuments, references and accessories used to perpetuate the original or re-established location of this corner:

Witnesses to corner location:

ROBERT M. LAMPMAN
JESSICA A. ZAMOR

Sketch:



NOTE: BLAZED ALL BEARING TREES

SURVEY CONTROL ORDER

| | | | | |
|-------------------|----------|-----------|---------------|------|
| Horizontal | | | | |
| Vertical | | | | |
| Corner | East (X) | North (Y) | Elevation (Z) | Zone |
| Control Sta. Name | | | | |