

U.S. PUBLIC LAND SURVEY MONUMENT RECORD - GRANT COUNTY, WI

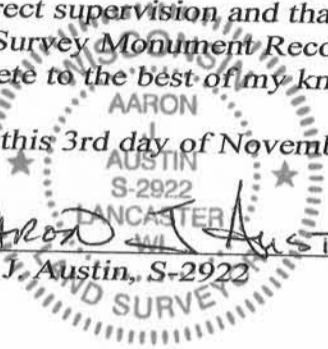
Section 35, Town 6 North Range 5 West, Town of Patch Grove

CERTIFICATE:

I, Aaron J. Austin, Wisconsin Professional Land Surveyor, do hereby certify that the corner location on this record was determined by me and/or under my direct supervision and that this U.S. Public Land Survey Monument Record is correct and complete to the best of my knowledge and belief.

Dated this 3rd day of November, 2015.

Aaron J. Austin
 Aaron J. Austin, S-2922



● = CORNER LOCATION

HISTORY OF CORNER ESTABLISHMENT:

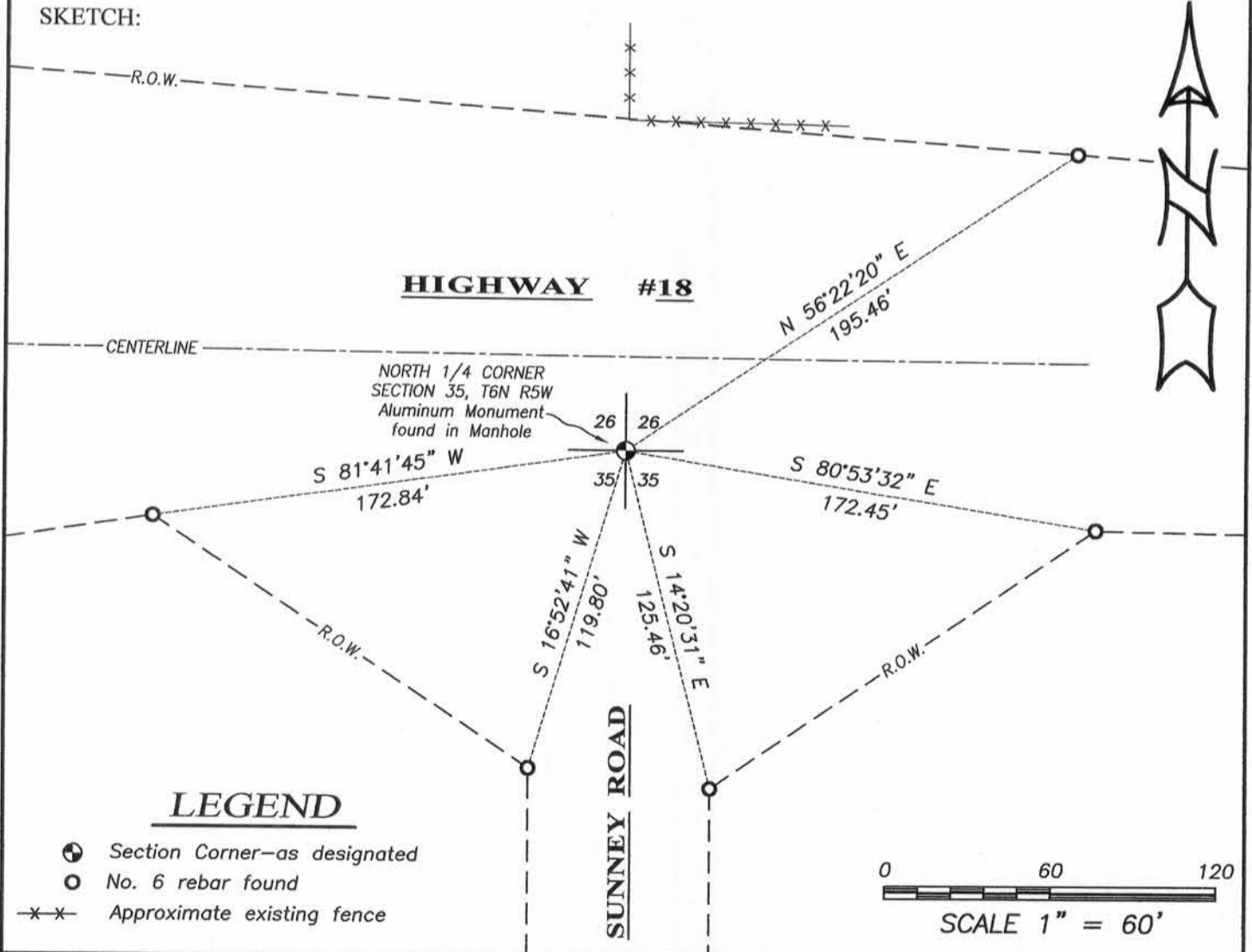
1833-Parke set original corner.
 1987-Ronald Hayden reset the corner and prepared a Certified Land Corner record.

DESCRIPTION OF CORNER EVIDENCE FOUND:

I found a Aluminum Monument inside an existing manhole. No witness corners were found from Ronald Hayden's tie sheet. I used existing 3/4" rebars from Right of Way Project No. 1660-01-21 as witness corners and verified this location with E.D.M. and G.P.S. methods,

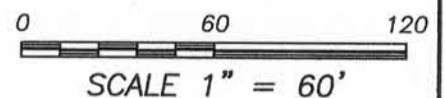
DESCRIPTION OF CORNER AND WITNESS MONUMENTS, references and accessories used to perpetuate the original or re-established location of this corner. Witnesses to corner location Shane Austin.

SKETCH:



LEGEND

- ⊕ Section Corner—as designated
- No. 6 rebar found
- *- Approximate existing fence



Austin Engineering LLC
 austinengineeringllc.com

4211 HWY 81 E, LANCASTER, WI 53813
 PHONE: 608-723-6363 FAX: 608-723-6702

JOB NO: 15s217
 H:CRD\15s217
 H:\TIE\T6NR5W\104

FIELDBOOK: TDSR
 DRAWN BY: AJ AUSTIN
 CREW: SW AUSTIN

CERTIFIED LAND CORNER

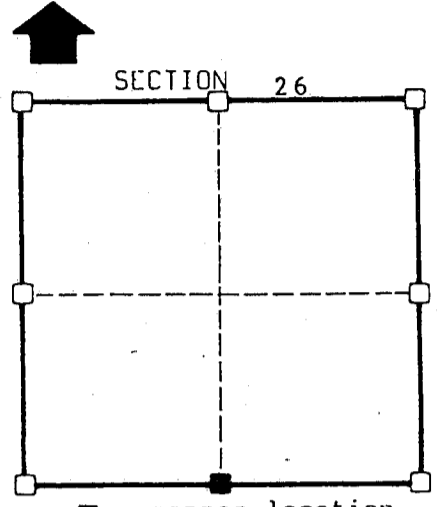
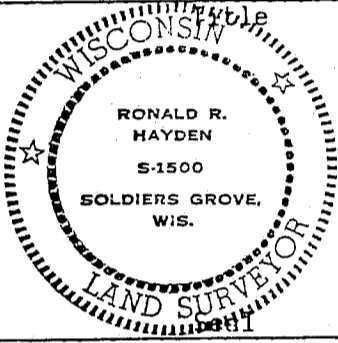
STATE OF WISCONSIN)
 COUNTY OF GRANT) S.S.

CERTIFICATE

I, Ronald R. Hayden, do hereby certify that on the 8th day of December 1987, I found (evidence) (~~no evidence~~) of the S 1/2 corner of Section 26, T 6 N, R 5 W, Fourth Principal Meridian, and I re-established said corner according to the Wisconsin Statutes as shown and described hereon.

Dated this 21 day of December 1987

Ronald R. Hayden



■ = corner location

T 6 N R 5 W

Town of: Patch Grove

History of original corner establishment:

Town Lines were established by Lucious Lyon.
 Subdivision by Harvey Parke in 1833.

Description of corner evidence found:

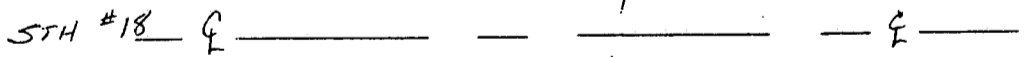
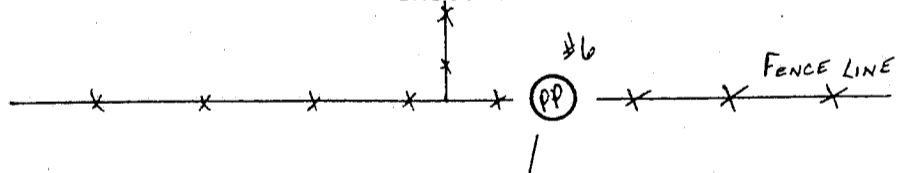
See Back.

Description of corner and witness monuments, references and accessories used to perpetuate the original or re-established location of this corner:

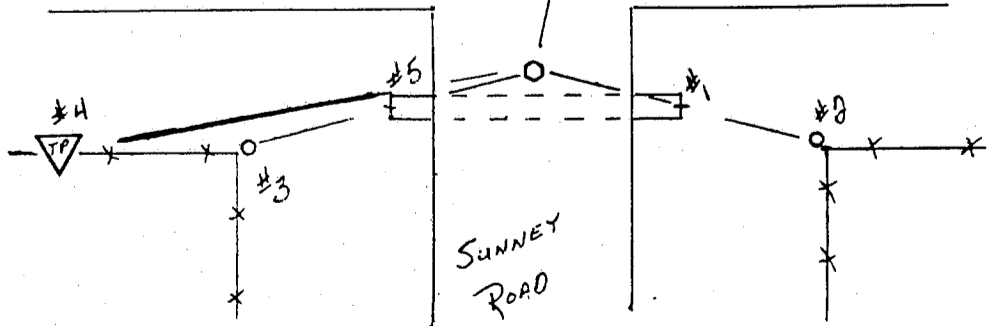
Witnesses to corner location:

Ronald R. Hayden
Carol S. Hayden

Sketch:



See back for witness descriptions.



SURVEY CONTROL ORDER

Horizontal

Vertical

WISCONSIN COORDINATE SYSTEM

Corner	East (X)	North (Y)	Elevation (Z)	Zone
Control Sta. Name				

CORNER EVIDENCE FOUND

I found no physical evidence of a corner, but I did find occupational evidence and after running an extensive control traverse and finding existing corner evidence in Sections 25, 26, 27, 34, 35, and 36, I determined the corner location. Set was a 3/4" X 24" round iron bar 6 inches below the surface of a paved road and falling 2 feet north of a culvert. After an extensive search at the Grant County Court House, no resurveying information could be found.

WITNESS DESCRIPTIONS

- 1) East end of a culvert in Sunney Road which bears: S 87° E 25.40'.
- 2) 3/4" X 24" round iron bar set at the fence corner and bears:
S 49° E 36.74'.
- 3) 3/4" X 24" round iron bar set at the fence corner and bears:
S 54° W 37.69'.
- 4) Masonary nail set in the top of a telephone pedestal which bears:
S 63° W 55.10'.
- 5) West end of a culvert in Sunney Road which bears: S 83° W 28.02'.
- 6) PK nail in the east side of a Power pole which bears: N 14° E 97.90'.