

# GRANT COUNTY CERTIFIED LAND CORNER

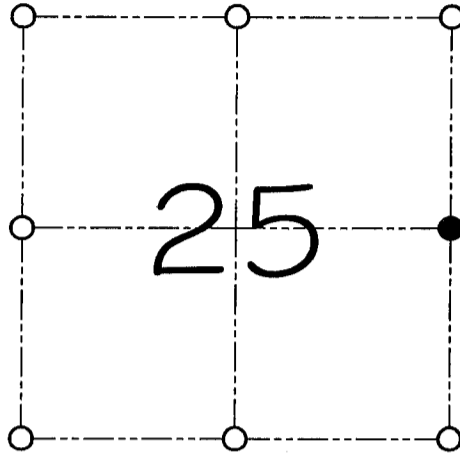
CORNER NUMBER 100

**CERTIFICATE:**

I, Larry L. Austin, do hereby certify that on the 14th day of February, 2000, I found evidence of the East 1/4 corner of Section 25, Town 6 North, Range 5 West, of the 4th Principal Meridian, and I re-established said corner according to the Wisconsin statutes as shown and described hereon.

Dated this 20th day of March, 2000

*Larry L. Austin*  
Larry L. Austin S-1903



● = CORNER LOCATION

**EAST 1/4 CORNER OF  
SECTION 25, T 6 N R 5 W  
TOWN OF MOUNT HOPE**

**HISTORY OF ORIGINAL CORNER ESTABLISHMENT:**

Corner was originally set in 1832 by Sibley.  
In 1995 Robert Lampman tied to the corner.

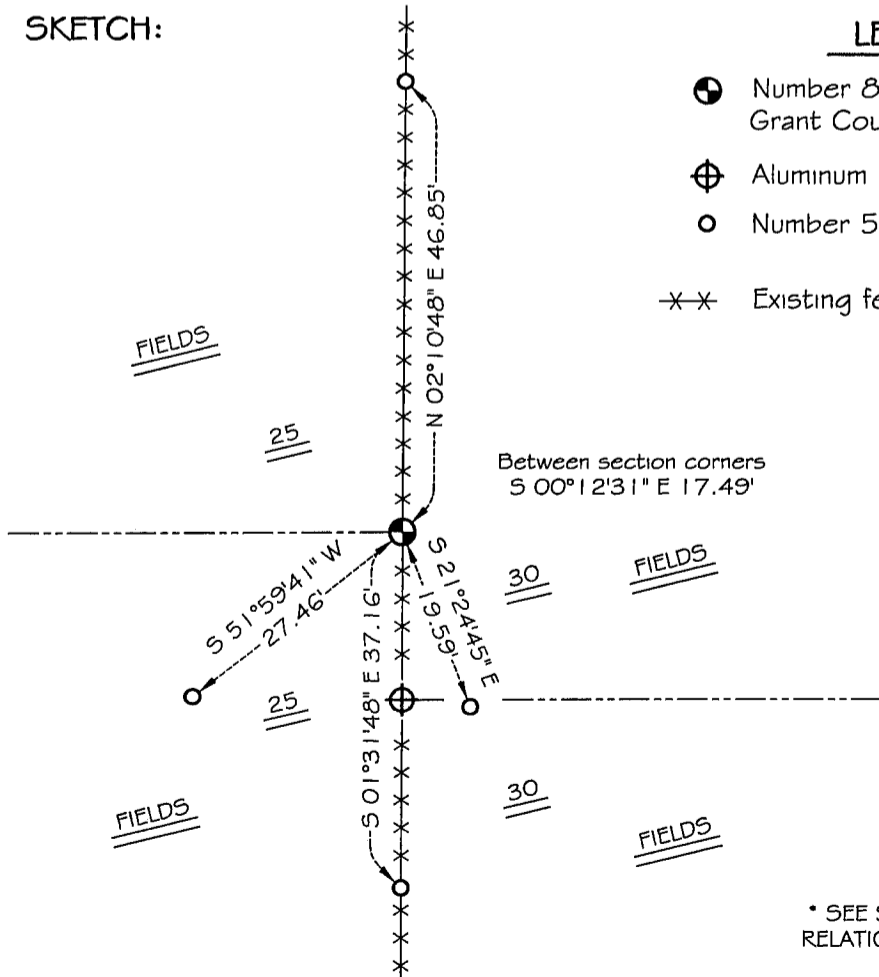
**DESCRIPTION OF CORNER EVIDENCE FOUND:**

Lampman used the West 1/4 of Section 30, T6N R4W and didn't use the proportioned offset. I set the corner at the proportioned offset from the West 1/4 of Section 30, T6N R4W. Verified this location using E.D.M. and G.P.S. methods.

**DESCRIPTION OF CORNER AND WITNESS MONUMENTS, references and accessories used to perpetuate the original or re-established location of this corner**

WITNESS TO THE CORNER LOCATION: SHANE AUSTIN & SHELBY BLINDERT

**SKETCH:**



LEGEND

- Number 8 by 30" rebar set with Grant County aluminum cap
- ⊕ Aluminum monument found
- Number 5 iron bar found
- ×× Existing fence location



\* SEE SECTION SUMMARY FOR \*  
RELATIONSHIP TO AREA CORNERS

SEP 17 1983

# U. S. PUBLIC LAND SURVEY MONUMENT RECORD

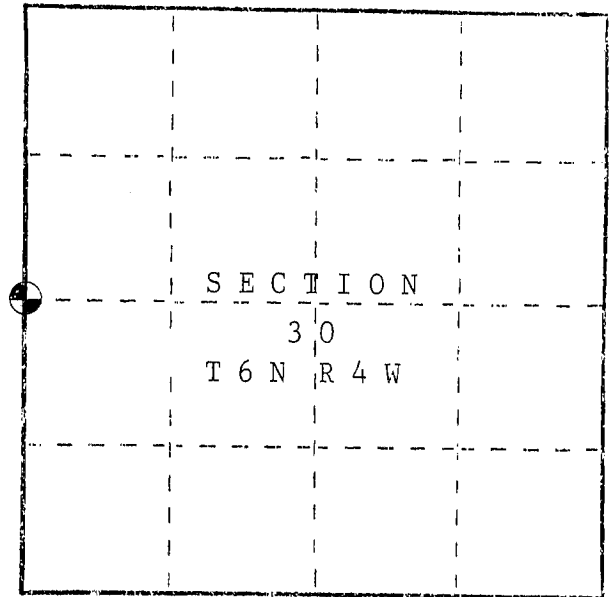
**INSTRUCTIONS :** This record shall show the location of the corner and shall include all of the following nine elements (a through i).

(a) Identify the corner by reference to the U.S. public land survey system.

○ = Corner monument restored.

West 1/4 corner of Section 30,  
Town 6 North, Range 4 West, Town of  
Mount Hope, Grant County, WI

Set aluminum monument (DOT)



(b) Describe any record evidence, monument evidence, occupational evidence, testimonial evidence or any other material evidence you considered, and whether the monument was found or placed.

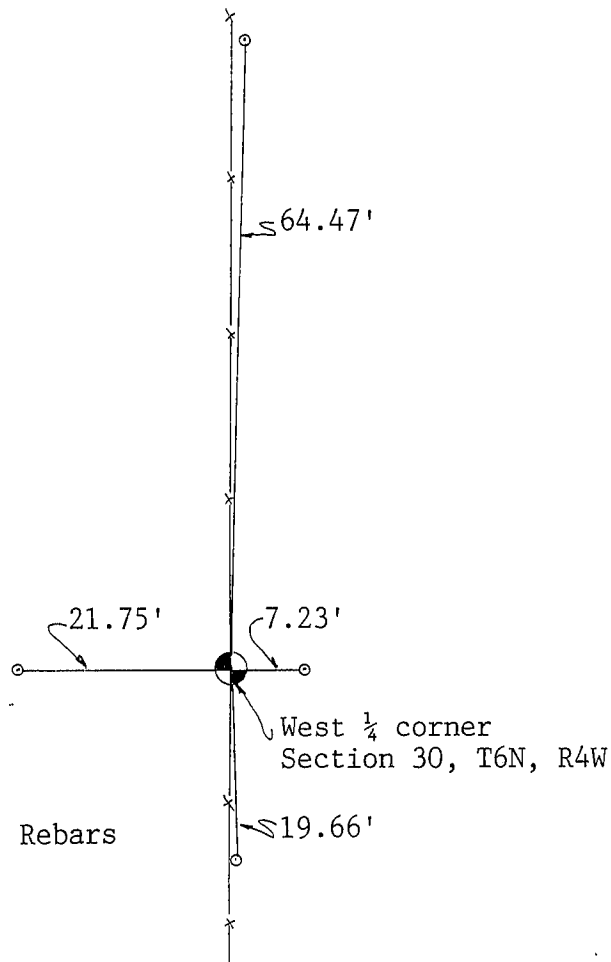
There is no record of this corner since the original government survey. I set an aluminum monument at the proportionate distance from the Southwest corner of Section 30 and the Northwest corner of Section 30 and in a North-South occupation line.

(c) In the plan view drawing below, provide reference ties to at least 4 witness monuments, or, if the location is within a municipality, to at least 2 witness monuments. (Witness monuments shall be made of concrete, natural stone, iron or other equally durable material.) Describe witness monuments.

(d) Show a plan view drawing depicting the relevant monuments and reference ties which is sufficient in detail to enable accurate relocation of the corner monument if the corner monument is disturbed. Indicate north.



Scale 1"=20'



● Set aluminum monument

○ Reference ties are 5/8" x 24" Rebars

(e) Describe any material discrepancy between the location of the corner as restored or reestablished and the location of that corner as previously restored or reestablished by distance and direction. Show the discrepancy on the plan view drawing under (d), above. Show the distances between the corner as previously restored or reestablished and (1) the corner as restored or reestablished, and (2) to at least 2 of the witness monuments shown on the drawing in (d), above.

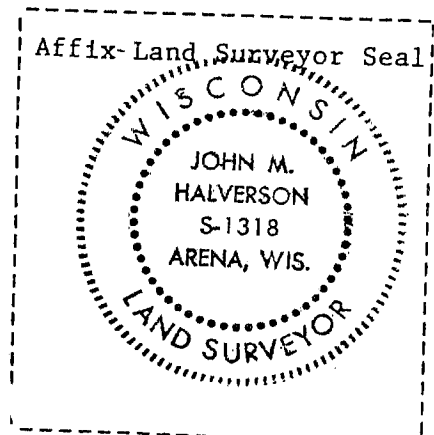
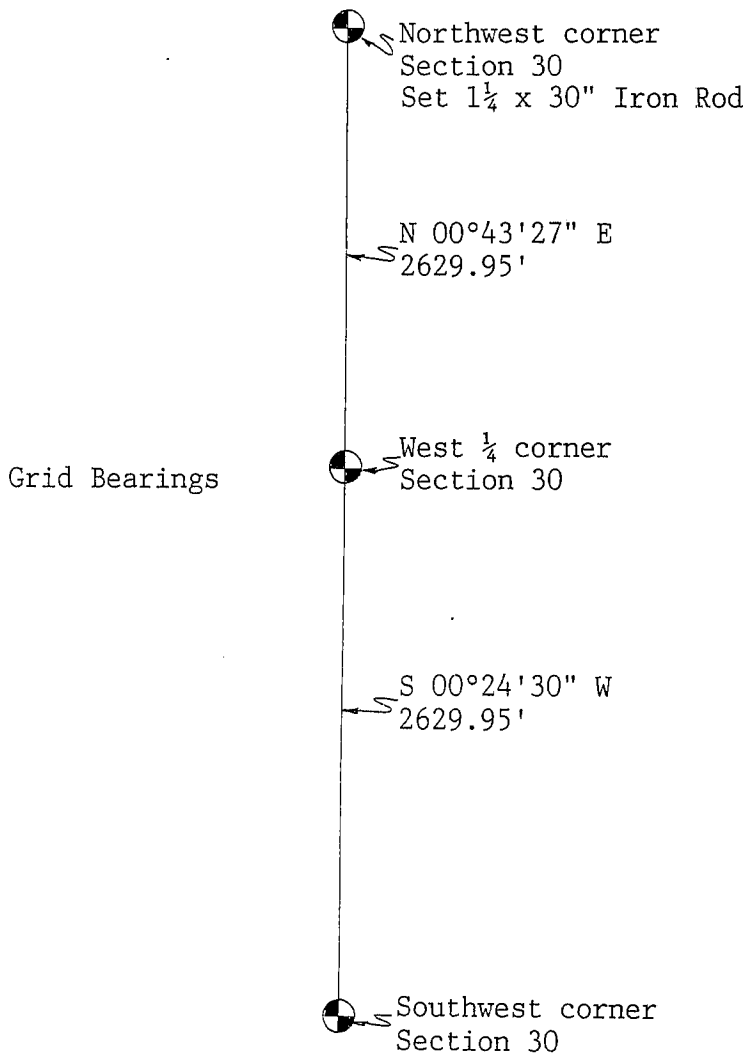
\_\_\_\_\_

(f) Was the corner restored through acceptance of (1) an obliterated evidence location, or, (2) a found perpetuated location?

\_\_\_\_\_

(g&h) Was the corner reestablished through lost corner proportionate methods? If so, show the method, including the directions and distances to other public land survey corners used as evidence or used for proportioning in determining the corner location?

Yes.



(i) I, John M. Halverson  
(type or print name) certify that the corner location shown on this record was determined by me or under my direction and control and that this U.S. Public Land Survey Monument Record is correct and complete to the best of my knowledge and belief.

John M. Halverson  
Signature

11/13/92  
Date