

SEP 1 U.S. PUBLIC LAND SURVEY MONUMENT RECORD

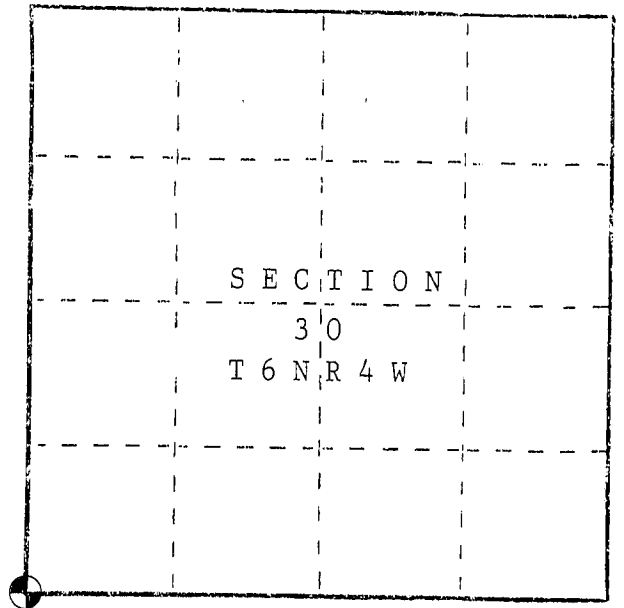
I N S T R U C T I O N S : This record shall show the location of the corner and shall include all of the following nine elements (a through i).

- (a) Identify the corner by reference to the U.S. public land survey system.

○ = Corner monument restored.

Southwest corner of Section 30,
Town 6 North, Range 4 West, Town of
Mount Hope, Grant County, WI

Set aluminum monument (DOT)

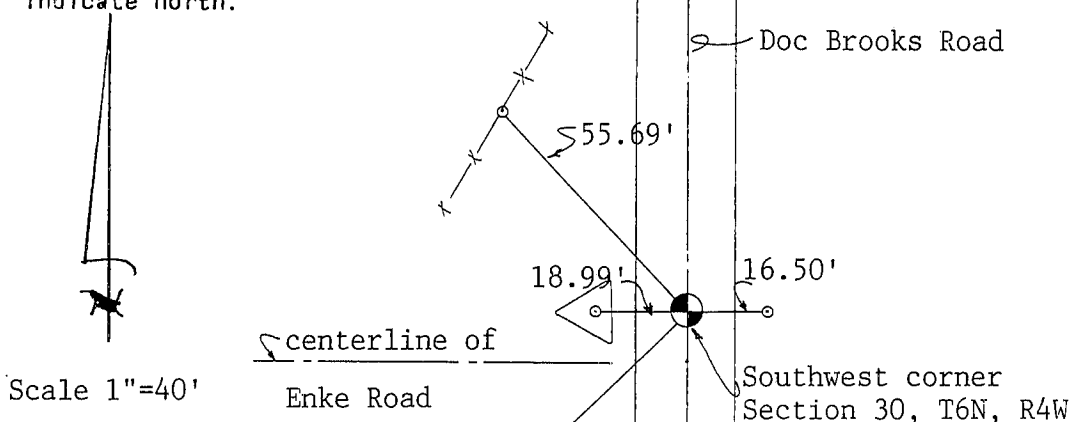


- (b) Describe any record evidence, monument evidence, occupational evidence, testimonial evidence or any other material evidence you considered, and whether the monument was found or placed.

I found a 7/8" Iron Rod as set by Ron Hayden. I replaced the Iron Rod with an aluminum monument.

- (c) In the plan view drawing below, provide reference ties to at least 4 witness monuments, or, if the location is within a municipality, to at least 2 witness monuments. (Witness monuments shall be made of concrete, natural stone, iron or other equally durable material.) Describe witness monuments.

- (d) Show a plan view drawing depicting the relevant monuments and reference ties which is sufficient in detail to enable accurate relocation of the corner monument if the corner monument is disturbed. Indicate north.



- Set aluminum Monument
○ Reference ties are 5/8" x 24" Rebars

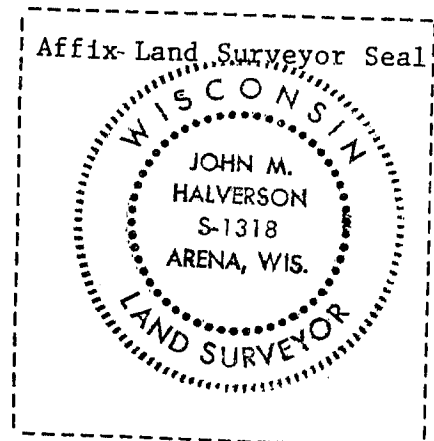
(e) Describe any material discrepancy between the location of the corner as restored or reestablished and the location of that corner as previously restored or reestablished by distance and direction. Show the discrepancy on the plan view drawing under (d), above. Show the distances between the corner as previously restored or reestablished and (1) the corner as restored or reestablished, and (2) to at least 2 of the witness monuments shown on the drawing in (d), above.

(f) Was the corner restored through acceptance of (1) an obliterated evidence location, or, (2) a found perpetuated location?

(2) a found perpetuated location

(g&h) Was the corner reestablished through lost corner proportionate methods? If so, show the method, including the directions and distances to other public land survey corners used as evidence or used for proportioning in determining the corner location?

No.



(i) I, John M. Halverson
(type or print name) certify that the corner location shown on this record was determined by me or under my direction and control and that this U.S. Public Land Survey Monument Record is correct and complete to the best of my knowledge and belief.

John M. Halverson
Signature

11/13/92
Date

CERTIFIED LAND CORNER

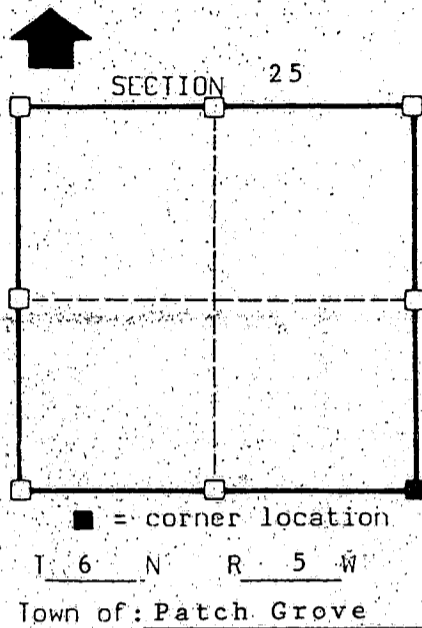
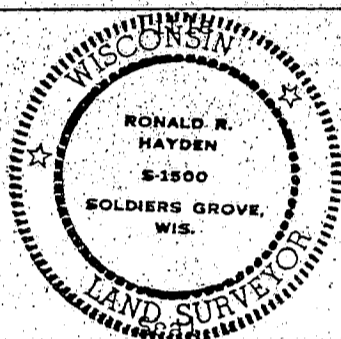
STATE OF WISCONSIN)
 COUNTY OF GRANT) S.S.

CERTIFICATE

I, Ronald R. Hayden, do hereby certify that on the 8th day of December 1987, I found (evidence) ~~(no evidence)~~ of the SE corner of Section 25, T 6 N, R 5 W, Fourth Principal Meridian, and I re-established said corner according to the Wisconsin Statutes as shown and described hereon.

Dated this 21 day of December 1987

Ronald R. Hayden



History of original corner establishment:

Town lines were established by Lucious Lyon.
 Subdivision by Harvey Parke in 1833.

Description of corner evidence found:

See back.

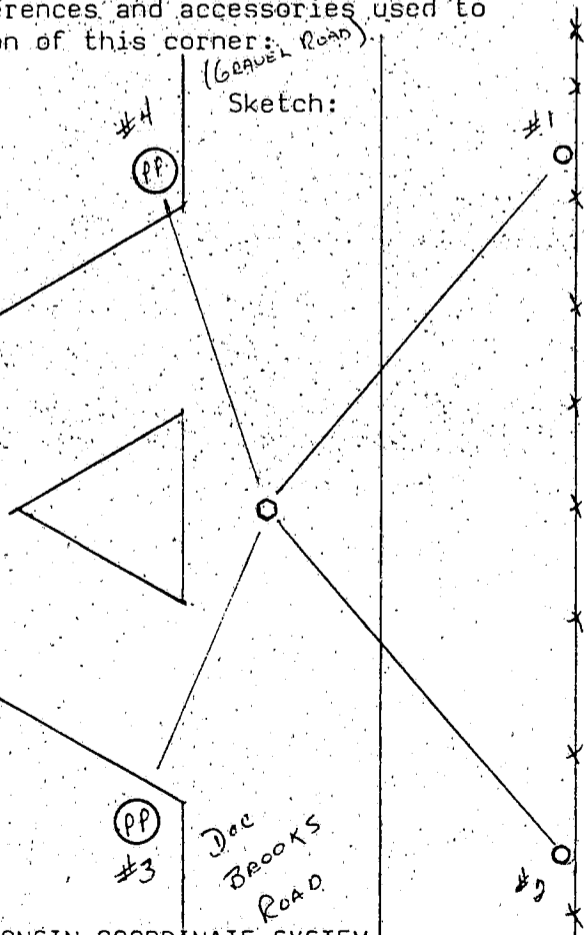
Description of corner and witness monuments, references and accessories used to perpetuate the original or re-established location of this corner:

Witnesses to corner location:

Ronald R. Hayden
Carol S. Hayden

ENKE ROAD
 (GRAVEL ROAD)

See back for witness description.



WISCONSIN COORDINATE SYSTEM

horizontal

vertical

Corner	East (X)	North (Y)	Elevation (Z)	Zone
Control Sta. Name				

CORNER EVIDENCE FOUND

I found the rusted remains of an iron bar which 3/8" remained. It was buried more than 1 foot below the surface of a gravel road known as "Doc Brooks Road". No other evidence was found and the bar was almost completely deteriorated. After a thorough investigation at the Grant County Court House I found no evidence of a bar being set nor any resurvey information. I accepted the remains as the corner and set a 7/8" X 30" round iron bar at the corner location. Bar is set 8 inches below the surface of the gravel road.

WITNESS DESCRIPTIONS

- 1) Set a 7/8" X 24" round iron bar for the witness which bears:
N 25° E 54.28'.
- 2) Set a 7/8" X 24" round iron bar for the witness which bears:
S 25° E 69.92'.
- 3) Set a PK Nail in the east side of a power pole which bears:
S 28° W 58.72'.
- 4) Set a PK Nail in the east side of a power pole which bears:
N 20° W 82.33'.

CERTIFIED LAND CORNER

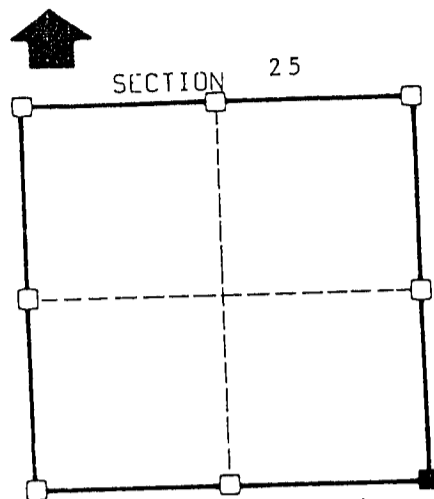
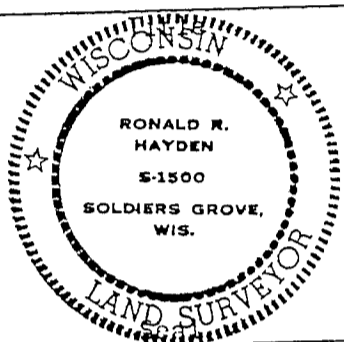
STATE OF WISCONSIN)
 COUNTY OF GRANT) S.S.

CERTIFICATE

I, Ronald R. Hayden, do hereby certify that on the 8th day of December 1987, I found (evidence) ~~(no evidence)~~ of the SE corner of Section 25, T 6 N, R 5 W, Fourth Principal Meridian, and I re-established said corner according to the Wisconsin Statutes as shown and described hereon.

Dated this 21 day of December 1987

Ronald R. Hayden



■ = corner location
 T 6 N R 5 W
 Town of: Patch Grove

History of original corner establishment:

Town lines were established by Lucious Lyon.
 Subdivision by Harvey Parke in 1833.

Description of corner evidence found:

See back.

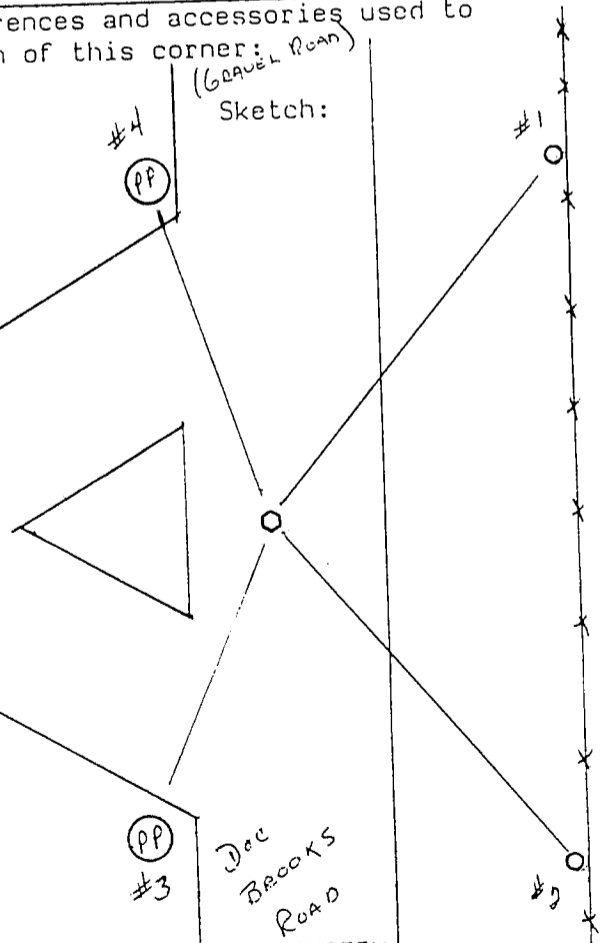
Description of corner and witness monuments, references and accessories used to perpetuate the original or re-established location of this corner:

Witnesses to corner location:

Ronald R. Hayden
Carol S. Hayden

ENKE ROAD
 (GRAVEL ROAD)

See back for witness description.



WISCONSIN COORDINATE ORDER

horizontal

vertical

WISCONSIN COORDINATE SYSTEM

Corner	East(X)	North(Y)	Elevation(Z)	Zone
Control Sta. Name				

CORNER EVIDENCE FOUND

I found the rusted remains of an iron bar which 3/8" remained. It was buried more than 1 foot below the surface of a gravel road known as "Doc Brooks Road". No other evidence was found and the bar was almost completely deteriorated. After a thorough investigation at the Grant County Court House I found no evidence of a bar being set nor any resurvey information. I accepted the remains as the corner and set a 7/8" X 30" round iron bar at the corner location. Bar is set 8 inches below the surface of the gravel road.

WITNESS DESCRIPTIONS

- 1) Set a 7/8" X 24" round iron bar for the witness which bears:
N 25° E 54.28'.
- 2) Set a 7/8" X 24" round iron bar for the witness which bears:
S 25° E 69.92'.
- 3) Set a PK Nail in the east side of a power pole which bears:
S 28° W 58.72'.
- 4) Set a PK Nail in the east side of a power pole which bears:
N 20° W 82.33'.