

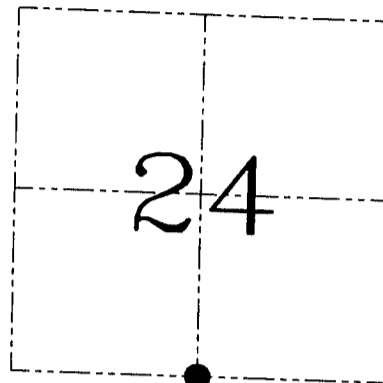
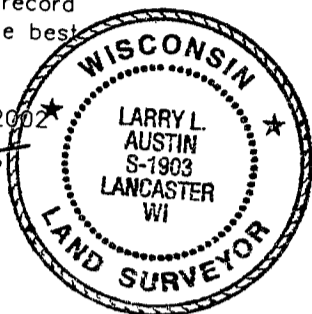
**U.S. PUBLIC LAND SURVEY MONUMENT RECORD - GRANT COUNTY, WI**  
 Section 24, Town 6 North Range 5 West, Town of Millville

**CERTIFICATE**

I, Larry L. Austin, do hereby certify that the corner location on this record was determined by me and/or under my direct supervision and that this U.S. public land survey monument record is correct and complete to the best of my knowledge and belief.

Dated this 15th day of July, 2002

*Larry L. Austin*  
 Larry L. Austin S-1903



● = CORNER LOCATION

**HISTORY OF CORNER ESTABLISHMENT**

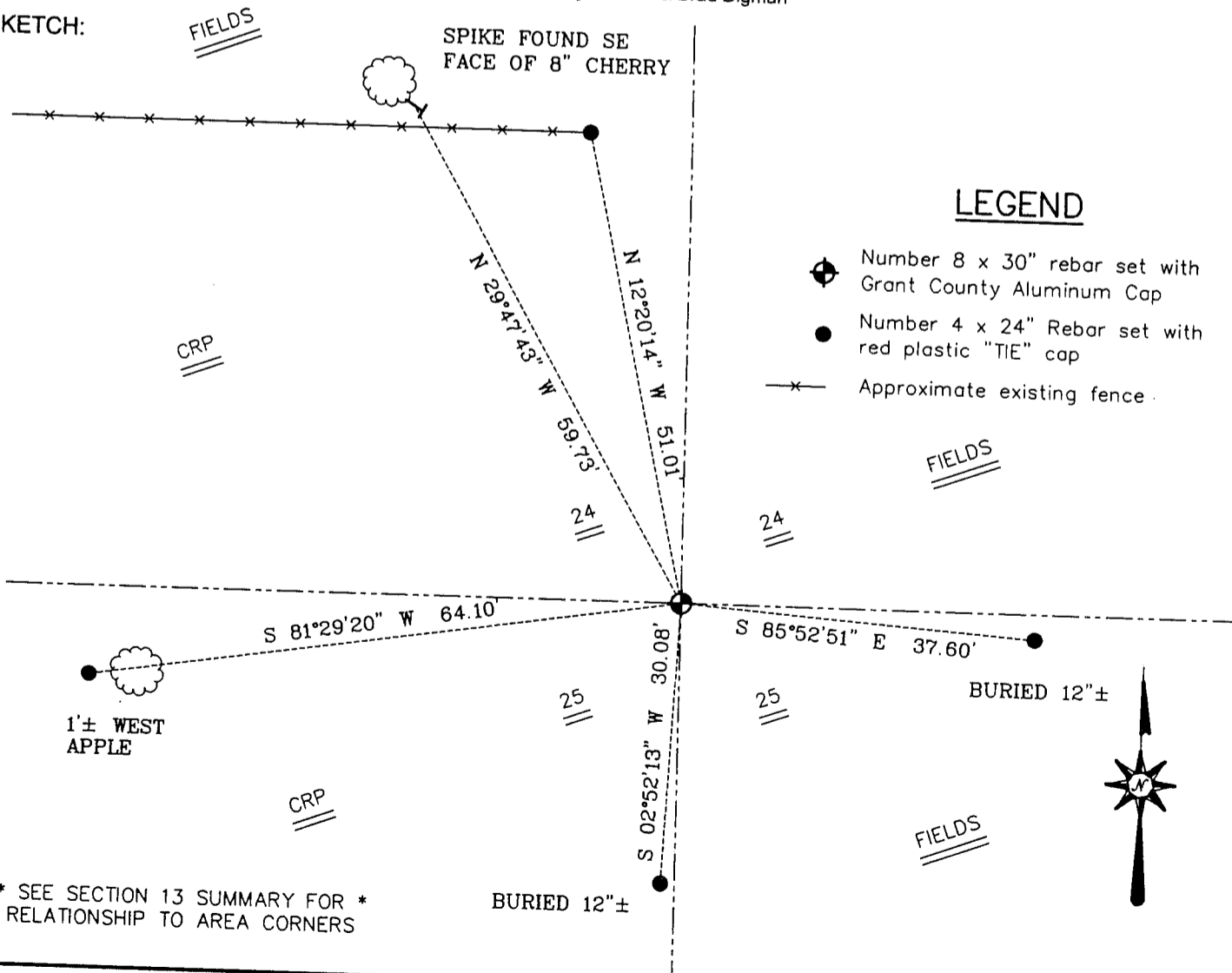
Corner was originally set in 1833 by Harvey Parke.  
 I set the corner in 2000.

**DESCRIPTION OF CORNER EVIDENCE FOUND**

I reset the corner because it was lost due to bulldozing along with all ties. Verified this location using EDM & GPS methods.

**DESCRIPTION OF CORNER AND WITNESS MONUMENTS, references and accessories used to perpetuate the original or re-established location of this corner. Witnesses to the corner location Bobby Sedgwick & Shelby Blindert & Brad Digman**

**SKETCH:**



**LEGEND**

- Number 8 x 30" rebar set with Grant County Aluminum Cap
- Number 4 x 24" Rebar set with red plastic "TIE" cap
- Approximate existing fence

\* SEE SECTION 13 SUMMARY FOR \*  
 RELATIONSHIP TO AREA CORNERS



SKETCH NOT TO SCALE

**AUSTIN ENGINEERING, LLC**

4211 HWY 81 EAST, LANCASTER, WI 53813  
 PHONE 608-723-6363 FAX 608-723-6702

FIELDBOOK: SDR33, 2227  
 G: \T6NR5W\13  
 C: \SWA\TIE\T6NR5W\82  
 CREW: BS-SB-SA-BD

DRAWN BY: SW AUSTIN  
 APPROVED: LL AUSTIN

**CORNER NUMBER 82**



CERTIFIED LAND CORNER

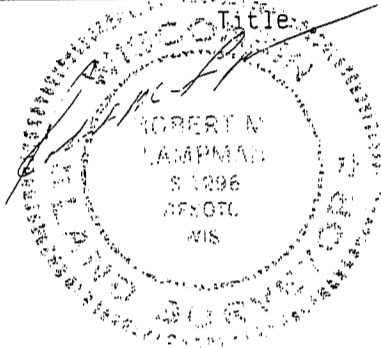
STATE OF WISCONSIN )  
 COUNTY OF GRANT ) S.S.

CERTIFICATE

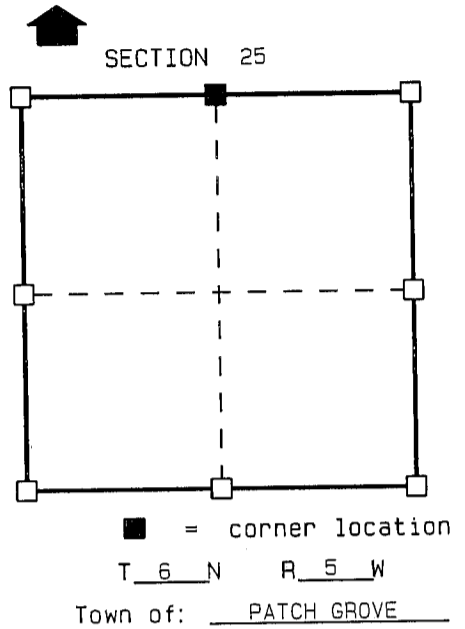
I, ROBERT M. LAMPMAN, do hereby certify that on the 2nd day of FEBRUARY 1995, I found ~~(evidence)~~ (no evidence) of the N 1/4 corner of SECTION 25, T 6 N, R 5 W, Fourth Principal Meridian, and I re-established said corner according to the Wisconsin Statutes as shown and described hereon.

Dated this 6th day of FEBRUARY 1995

ROBERT M. LAMPMAN R.L.S. S-1296



Seal



History of original corner establishment:

FOUND NO RECORD OF THIS CORNER SINCE ORIGINAL GOVERNMENT SURVEY.

Description of corner evidence found:

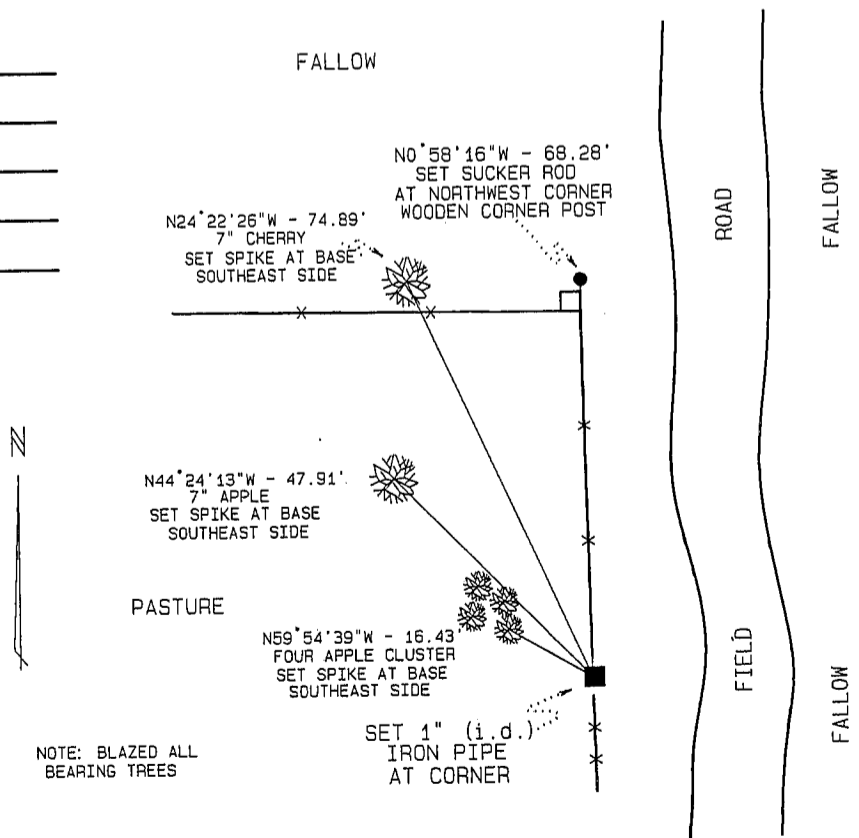
RE-ESTABLISHED CORNER ON LINE BETWEEN THE NORTHWEST AND NORTHEAST CORNERS OF SAID SECTION 25. USED OCCUPATIONAL EVIDENCE AT THE CORNER AREA TO ESTABLISH EAST-WEST POSITION. USING THIS LOCATION THE NORTH-SOUTH ONE-QUARTER LINE MATCHES AN AVERAGE OF OCCUPATIONAL EVIDENCE AT THE CENTER AND THE E 1/4 CORNER OF THE NW 1/4 OF SAID SECTION 25.

Description of corner and witness monuments, references and accessories used to perpetuate the original or re-established location of this corner:

Witnesses to corner location:

ROBERT M. LAMPMAN  
JESSICA A. ZAMOR  
 \_\_\_\_\_  
 \_\_\_\_\_  
 \_\_\_\_\_

Sketch:



NOTE: BLAZED ALL BEARING TREES

SURVEY CONTROL ORDER

Horizontal
Vertical

WISCONSIN COORDINATE SYSTEM

Corner	East (X)	North (Y)	Elevation (Z)	Zone
Control Sta. Name				

# DATA SHEET

## SECTION 25, T6N, R5W TOWN OF PATCH GROVE, GRANT COUNTY

BEARINGS REFERENCED TO THE WEST LINE OF THE NW 1/4  
OF SECTION 25, T6N, R5W, RECORDED AS BEARING S0°52'34"E.



SCALE: 1" = 1000'

