

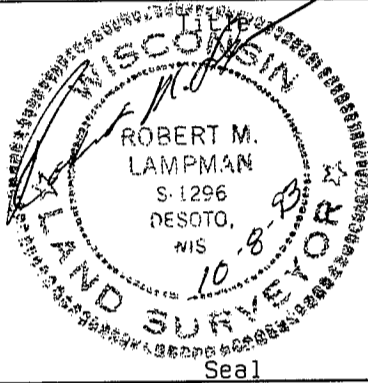
STATE OF WISCONSIN )  
 COUNTY OF GRANT ) S.S.

CERTIFICATE

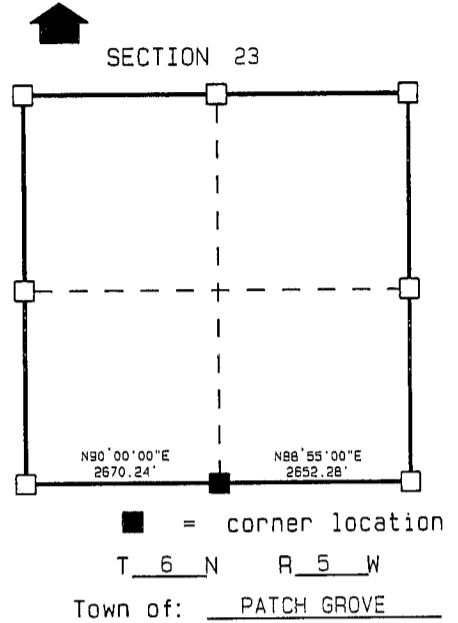
I, ROBERT M. LAMPMAN, do hereby certify that on the 8th day of OCTOBER 1993, I found ~~(evidence)~~ (no evidence) of the S 1/4 corner of SECTION 23, T 6 N, R 5 W, Fourth Principal Meridian, and I re-established said corner according to the Wisconsin Statutes as shown and described hereon.

Dated this 8th day of OCTOBER 1993

ROBERT M. LAMPMAN R.L.S. S-1296



Seal

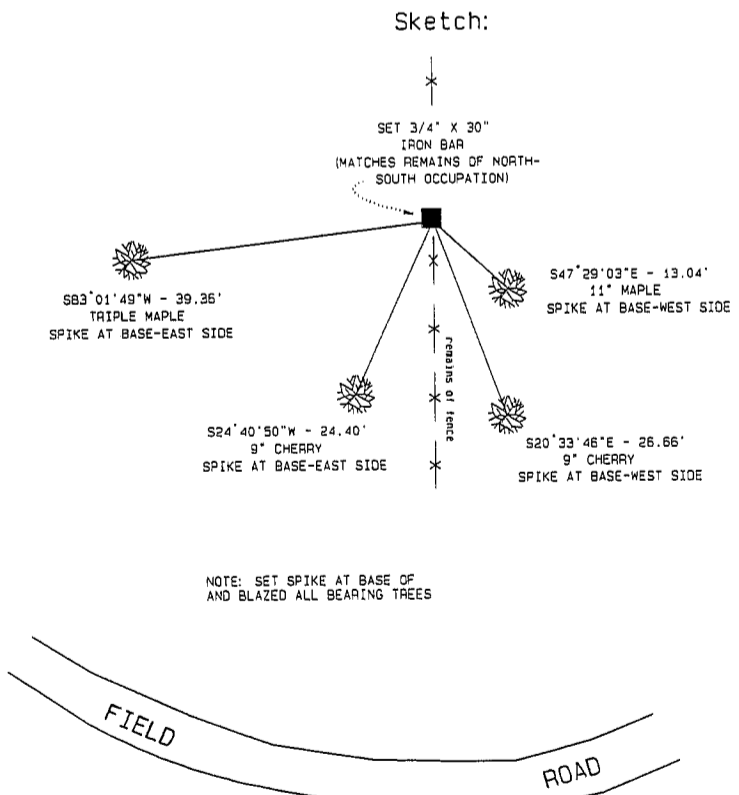


History of original corner establishment:  
 ORIGINAL CORNER ESTABLISHED BY ORSON LYON IN 1840.

Description of corner evidence found:  
 USED OCCUPATIONAL EVIDENCE TO ESTABLISH CORNER LOCATION.

Description of corner and witness monuments, references and accessories used to perpetuate the original or re-established location of this corner:

Witnesses to corner location:  
ROBERT M. LAMPMAN  
JESSICA A. ZAMOR



SURVEY CONTROL ORDER

Horizontal
Vertical

WISCONSIN COORDINATE SYSTEM

Corner	East (X)	North (Y)	Elevation (Z)	Zone
Control Sta. Name				