

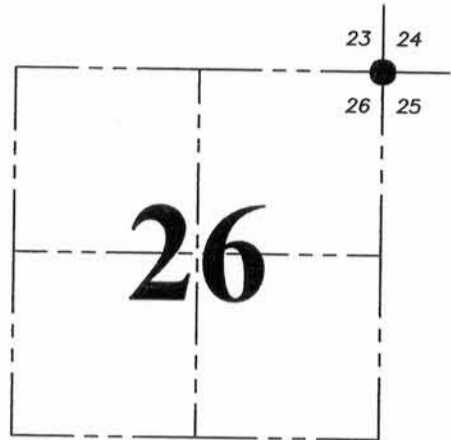
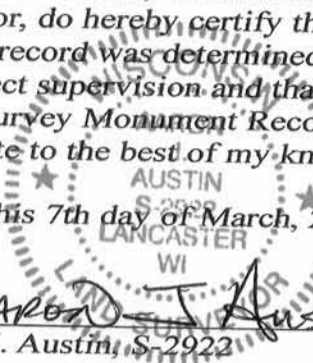
U.S. PUBLIC LAND SURVEY MONUMENT RECORD - GRANT COUNTY, WI
 Section 26, Town 6 North Range 5 West, Town of Patch Grove

CERTIFICATE:

I, Aaron J. Austin, Wisconsin Professional Land Surveyor, do hereby certify that the corner location on this record was determined by me and/or under my direct supervision and that this U.S. Public Land Survey Monument Record is correct and complete to the best of my knowledge and belief.

Dated this 7th day of March, 2016.

Aaron J. Austin
 Aaron J. Austin, S-2922



● = CORNER LOCATION

HISTORY OF CORNER ESTABLISHMENT:

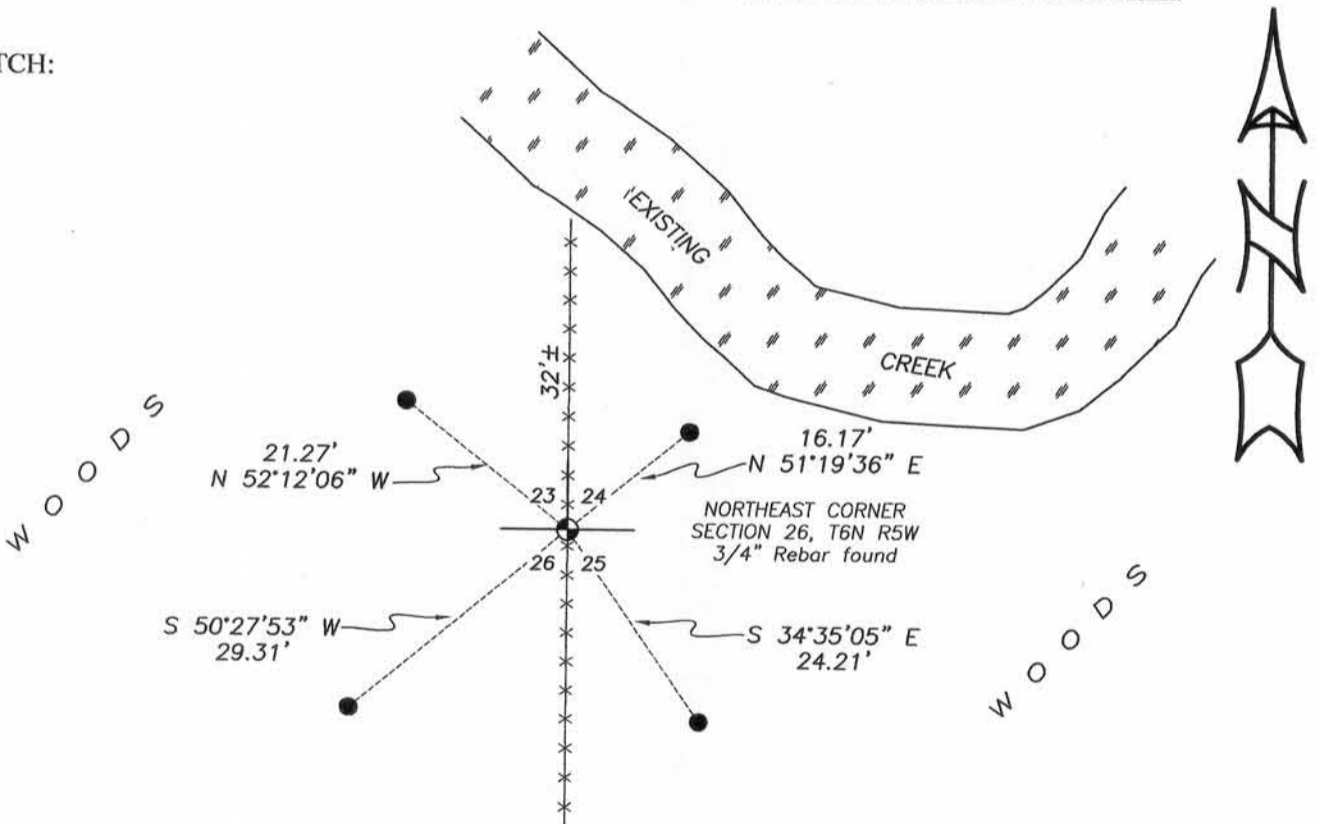
1833-Robert Clark set the original corner.
 1993-Robert Lampman reset the corner and prepared a Certified Land Corner record.

DESCRIPTION OF CORNER EVIDENCE FOUND:

I found the 3/4" rebar set by Lampman. I set 4 new witness corners after I verified it's location with E.D.M. and G.P.S. methods.

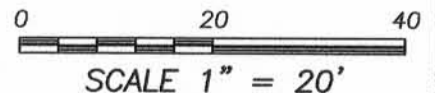
DESCRIPTION OF CORNER AND WITNESS MONUMENTS, references and accessories used to perpetuate the original or re-established location of this corner. Witnesses to corner location Shane Austin and Aaron Austin.

SKETCH:



LEGEND

- ⊕ Section Corner—as designated
- 1/2" x 12" Rebar set
- x-x- Existing fence



SCALE 1" = 20'



4211 HWY 81 E, LANCASTER, WI 53813
 PHONE: 608-723-6363 FAX: 608-723-6702

JOB NO: 16s016
 H:\CRD\16s016
 H:\TIE\T6NR5W\83

FIELDBOOK: TDSR
 DRAWN BY: AJ AUSTIN
 CREW: SW AUSTIN-AJ AUSTIN

MAR 07 2016

CERTIFIED LAND CORNER

OCT 27 1993

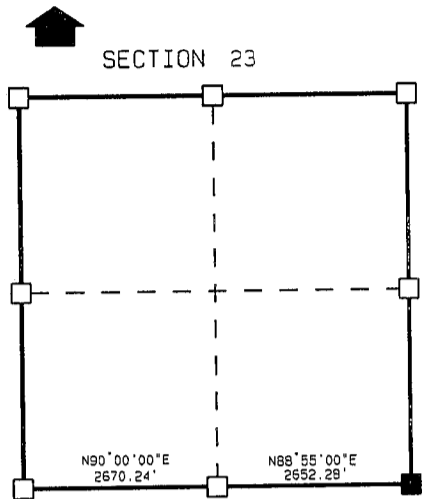
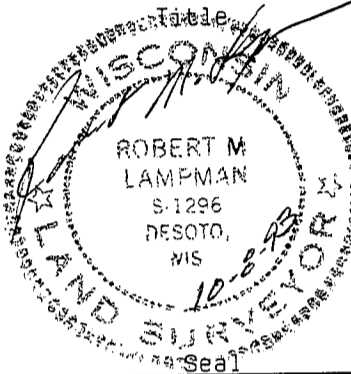
STATE OF WISCONSIN)
 COUNTY OF GRANT) S.S.

CERTIFICATE

I, ROBERT M. LAMPMAN, do hereby certify that on the 8th day of OCTOBER 1993, I found (~~evidence~~) (no evidence) of the SE corner of SECTION 23, T 6 N, R 5 W, Fourth Principal Meridian, and I re-established said corner according to the Wisconsin Statutes as shown and described hereon.

Dated this 8th day of OCTOBER 1993

ROBERT M. LAMPMAN R.L.S. S-1296



■ = corner location
 T 6 N R 5 W
 Town of: PATCH GROVE

History of original corner establishment:
 ORIGINAL CORNER ESTABLISHED BY ORSON LYON IN 1840.

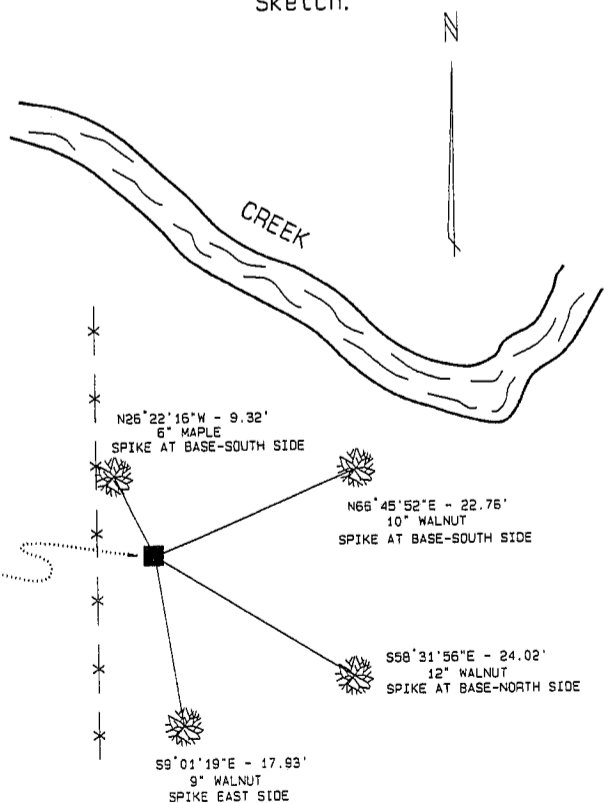
Description of corner evidence found:
 USED OCCUPATIONAL EVIDENCE TO ESTABLISH CORNER LOCATION.

Description of corner and witness monuments, references and accessories used to perpetuate the original or re-established location of this corner:

Witnesses to corner location:

ROBERT M. LAMPMAN
JESSICA A. ZAMOR

Sketch:



NOTE: SET SPIKE AT BASE OF ALL BEARING TREES - BLAZED ONLY THE MAPLE

SET 3/4" X 30" IRON BAR AT CORNER (6'± EAST OF REMAINS OF NORTH-SOUTH OCCUPATION)

SURVEY CONTROL ORDER

Horizontal
Vertical

WISCONSIN COORDINATE SYSTEM

Corner	East (X)	North (Y)	Elevation (Z)	Zone
Control Sta. Name				