

CERTIFIED LAND CORNER

MAR 4 1994

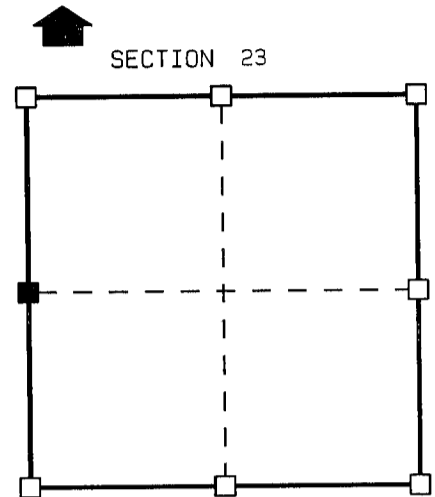
STATE OF WISCONSIN )  
 COUNTY OF GRANT ) S.S.

CERTIFICATE

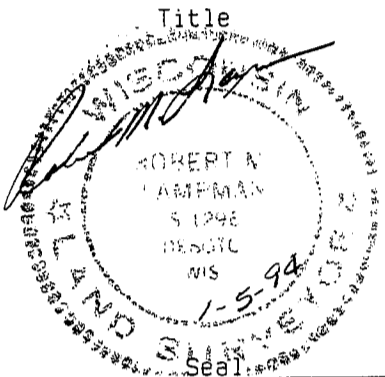
I, ROBERT M. LAMPMAN, do hereby certify that on the 4th day of JANUARY 1994, I found (~~evidence~~) (no evidence) of the W 1/4 corner of SECTION 23, T 6 N, R 5 W, Fourth Principal Meridian, and I re-established said corner according to the Wisconsin Statutes as shown and described hereon.

Dated this 5th day of JANUARY 1994

ROBERT M. LAMPMAN R.L.S. S-1296



■ = corner location  
 T 6 N R 5 W  
 Town of: PATCH GROVE



History of original corner establishment:

ORIGINAL CORNER ESTABLISHED BY ORSON LYON IN 1840.

Description of corner evidence found:

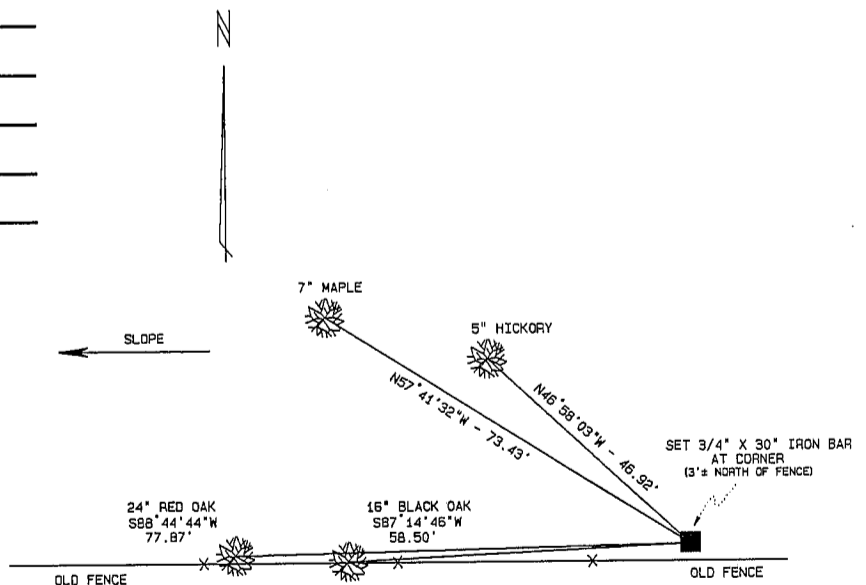
ESTABLISHED CORNER LOCATION BASED ON A THOROUGH EXAMINATION OF OCCUPATIONAL EVIDENCE ON THE INTERIOR OF SECTION 23.

Description of corner and witness monuments, references and accessories used to perpetuate the original or re-established location of this corner:

Witnesses to corner location:

ROBERT M. LAMPMAN  
JESSICA A. ZAMOR  
JERRY L. TORGERSON

Sketch:



NOTE: SET SPIKE AT BASE OF AND BLAZED ALL BEARING TREES.

SURVEY CONTROL ORDER

Horizontal
Vertical

WISCONSIN COORDINATE SYSTEM

Corner	East (X)	North (Y)	Elevation (Z)	Zone
Control Sta. Name				

# DATA SHEET

## SECTION 23, T6N, R5W

### TOWN OF PATCH GROVE

### GRANT COUNTY



LEGEND:  
 ○ 3/4" X 30" IRON BAR

