

CERTIFIED LAND CORNER

OCT 27 1993

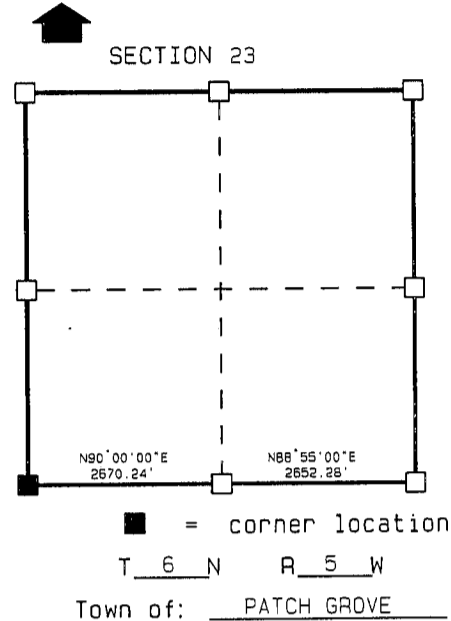
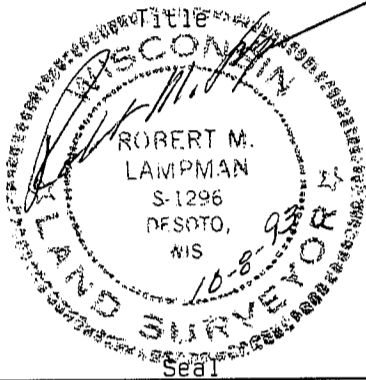
STATE OF WISCONSIN)
COUNTY OF GRANT) S.S.

CERTIFICATE

I, ROBERT M. LAMPMAN, do hereby certify that on the 8th day of OCTOBER 1993, I found (~~evidence~~) (no evidence) of the SW corner of SECTION 23, T 6 N, R 5 W, Fourth Principal Meridian, and I re-established said corner according to the Wisconsin Statutes as shown and described hereon.

Dated this 8th day of OCTOBER 1993

ROBERT M. LAMPMAN R.L.S. S-1296



History of original corner establishment:

ORIGINAL CORNER ESTABLISHED BY ORSON LYON IN 1840.

Description of corner evidence found:

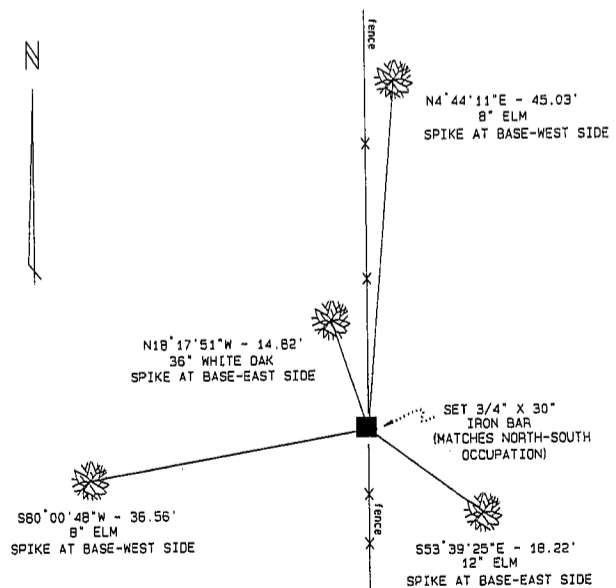
USED OCCUPATIONAL EVIDENCE TO ESTABLISH CORNER LOCATION.

Description of corner and witness monuments, references and accessories used to perpetuate the original or re-established location of this corner:

Witnesses to corner location:

ROBERT M. LAMPMAN
JESSICA A. ZAMOR

Sketch:



NOTE: SET SPIKE AT BASE OF AND BLAZED ALL BEARING TREES

SURVEY CONTROL ORDER

Horizontal				
Vertical				
WISCONSIN COORDINATE SYSTEM				
Corner	East (X)	North (Y)	Elevation (Z)	Zone
Control Sta. Name				