

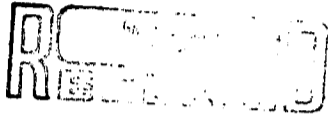
# U. S. PUBLIC LAND SURVEY MONUMENT RECORD

**INSTRUCTIONS:** This record shall show the location of the corner and shall include all of the following nine elements (a through i).

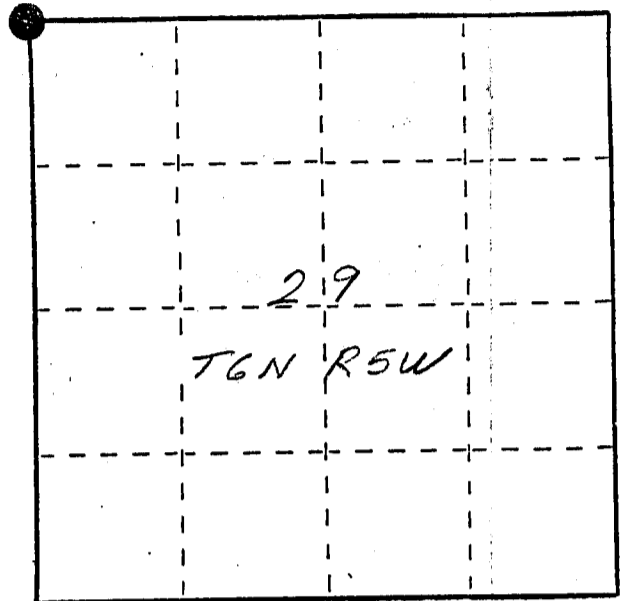
(a) Identify the corner by reference to the U.S. public land survey system.

● = Corner monument restored.

NW corner section 29 T6N R5W of the 4th P.M.  
Town of Patch Grove  
Grant County, Wisconsin



MAR 2 1988

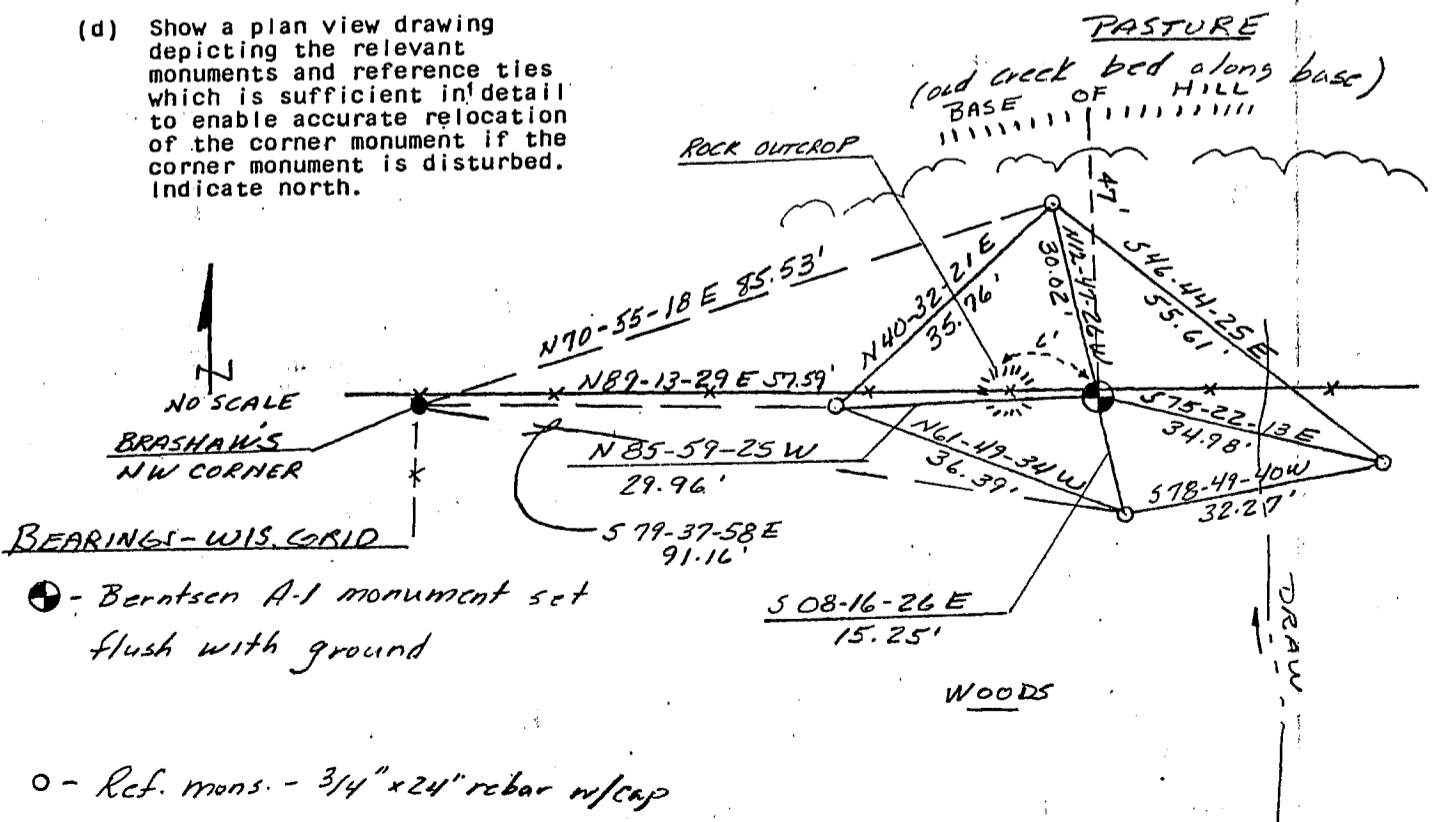


(b) Describe any record evidence, monument evidence, occupational evidence, testimonial evidence or any other material evidence you considered, and whether the monument was found or placed.

A rebar from a 1984 Paul C. Brashaw survey was found but not used as the section corner. Line between Brashaw's south 1/4 corner sec. 19 and above said rebar was used. This line fit the existing ancient fence line. Record distance (2640') was used between Brashaw's said so. 1/4 corner and monument set. Distance between monument set and NE corner section 29-6-5 then agrees closely with record distance. TOPO CALL FOR stream 52.8' north of corner agrees with base of hill and old stream bed.

(c) In the plan view drawing below, provide reference ties to at least 4 witness monuments, or, if the location is within a municipality, to at least 2 witness monuments. (Witness monuments shall be made of concrete, natural stone, iron or other equally durable material, ~~except~~ ~~wood.~~) Describe witness monuments.

(d) Show a plan view drawing depicting the relevant monuments and reference ties which is sufficient in detail to enable accurate relocation of the corner monument if the corner monument is disturbed. Indicate north.

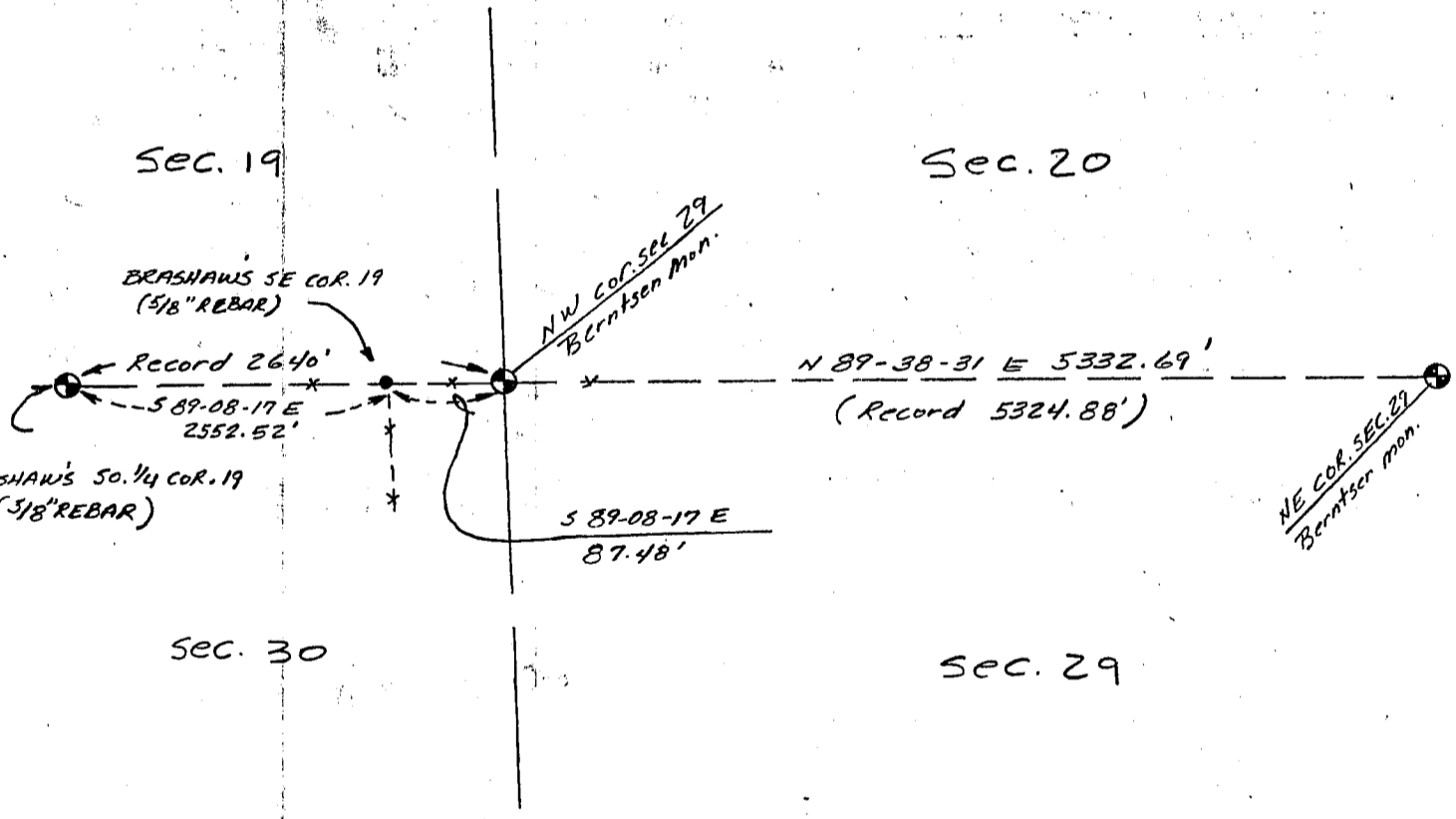


(e) Describe any material discrepancy between the location of the corner as restored or reestablished and the location of that corner as previously restored or reestablished by distance and direction. Show the discrepancy on the plan view drawing under (d), above. Show the distances between the corner as previously restored or reestablished and (1) the corner as restored or reestablished, and (2) to at least 2 of the witness monuments shown on the drawing in (d), above.

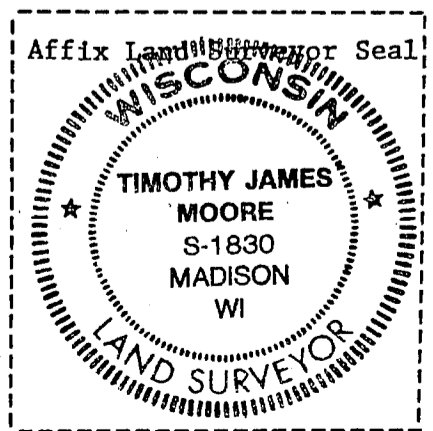
Brashaw's 1984 survey held existing fence corner intersection as section corner. This disagrees with record distance between So. 1/4 cor. sec. 19 and SE cor. Sec. 19. It also would make the distance between the NW cor. 29 and the NE cor. 29, as established, about 95' longer than record distance.

(f) Was the corner restored through acceptance of (1) an obliterated evidence location, or, (2) a found perpetuated location?

(g&h) Was the corner reestablished through lost corner proportionate methods? If so, show the method, including the directions and distances to other public land survey corners used as evidence or used for proportioning in determining the corner location?



NO SCALE



(i) I, Timothy J. Moore (type or print name) certify that the corner location shown on this record was determined by me or under my direction and control and that this U.S. Public Land Survey Monument Record is correct and complete to the best of my knowledge and belief.

Timothy J. Moore Signature 10-19-87 Date