

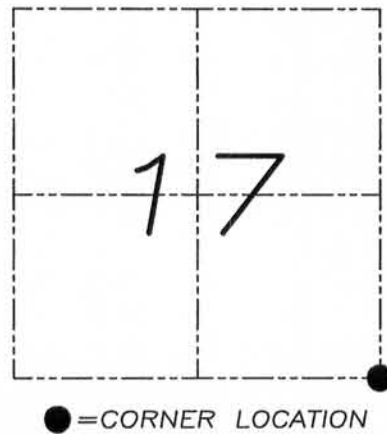
# U.S. PUBLIC LAND SURVEY MONUMENT RECORD

Section 17, Town 6 North Range 5 West, Town of Millville, Grant County, Wisconsin

## CERTIFICATE

I, Larry L. Austin, do hereby certify that the corner location on this record was determined by me and/or under my direct supervision and that this U.S. public land survey monument record is correct and complete to the best of my knowledge and belief.

*Larry L. Austin*  
Larry L. Austin, S-1903



## HISTORY OF CORNER

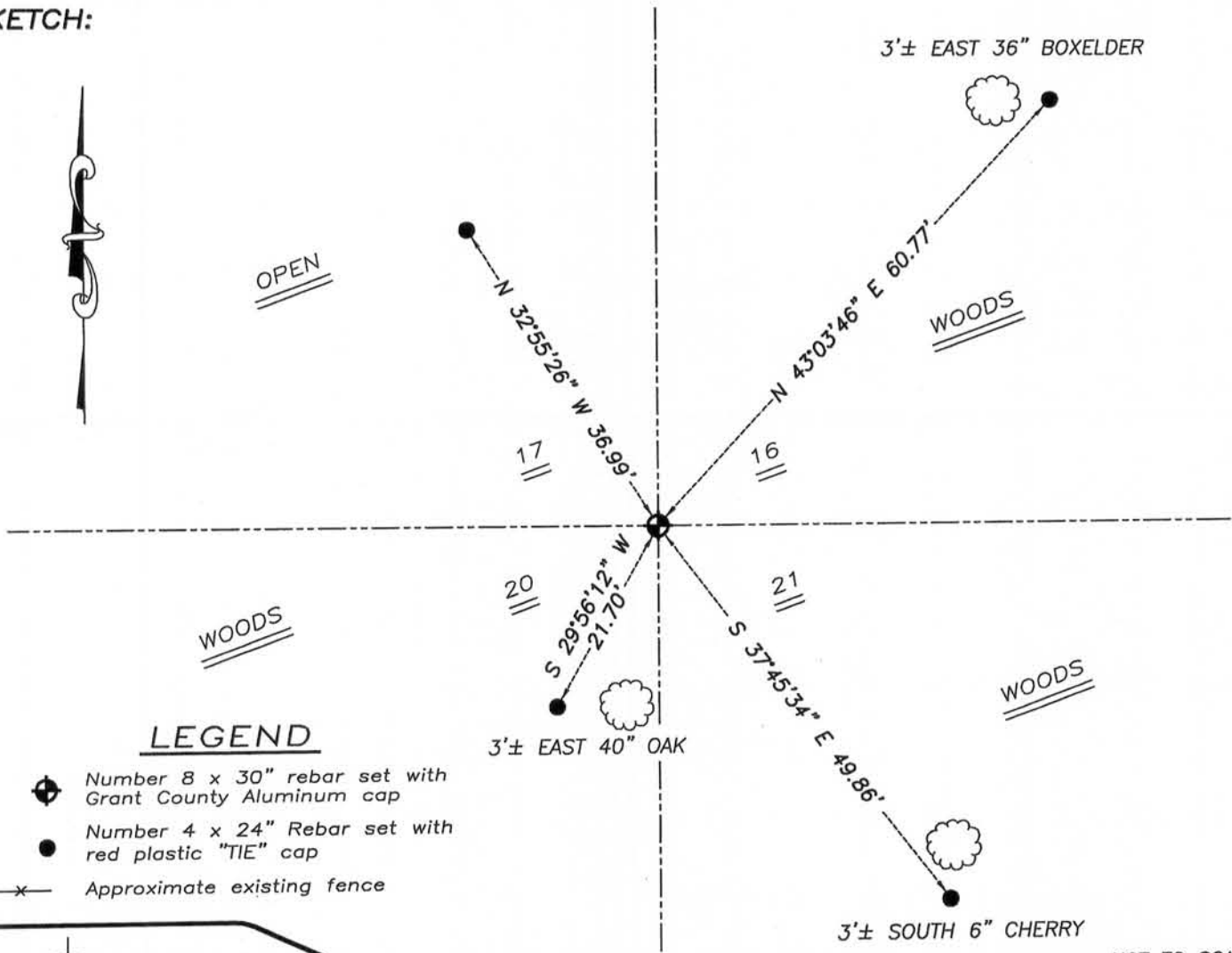
Corner was originally set in 1832 by Harvey Parke. In 1854 John Clark tied to the corner with no mention of what was found or set. No other record of the corner was found.

## CORNER EVIDENCE FOUND

No evidence of the original corner was found. I reset the corner by a projection of the existing occupation line East and South. This location fit well with adjoining corners. Verified this location by E.D.M. and G.P.S. methods.

DESCRIPTION OF CORNER AND WITNESS MONUMENTS, references and accessories used to perpetuate the original or re-established location of this corner. Witnesses to monument location Bobby Sedgwick & Brad Digman & Shane Austin

## SKETCH:



## LEGEND

- Number 8 x 30" rebar set with Grant County Aluminum cap
- Number 4 x 24" Rebar set with red plastic "TIE" cap
- Approximate existing fence

NOT TO SCALE



**Austin Engineering LLC**  
austinengineeringllc.com

4211 HWY 81 E, LANCASTER, WI 53813  
PHONE: 608-723-6363 FAX: 608-723-6702

JOB NUMBER 10S042-STEEL  
FIELDBOOK: TDSR, 2911  
G:\T6NR6W\18  
H:\TIE\T6NR5W\69

DRAWN BY: SW AUSTIN  
APPROVED: LL AUSTIN

69

SEP 12 2011