

**U.S. PUBLIC LAND SURVEY MONUMENT RECORD - GRANT COUNTY, WI**

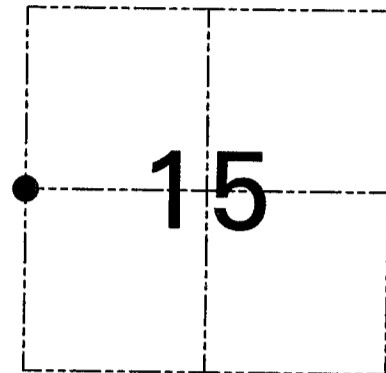
Section 15, Town 6 North Range 5 West, Town of Millville

**CERTIFICATE**

I, Larry L. Austin, do hereby certify that the corner location on this record was determined by me and/or under my direct supervision and that this U.S. public land survey monument record is correct and complete to the best of my knowledge and belief.

Dated this 5th day of April, 2001

*Larry L. Austin*  
Larry L. Austin S-1903



● = CORNER LOCATION

**HISTORY OF CORNER ESTABLISHMENT**

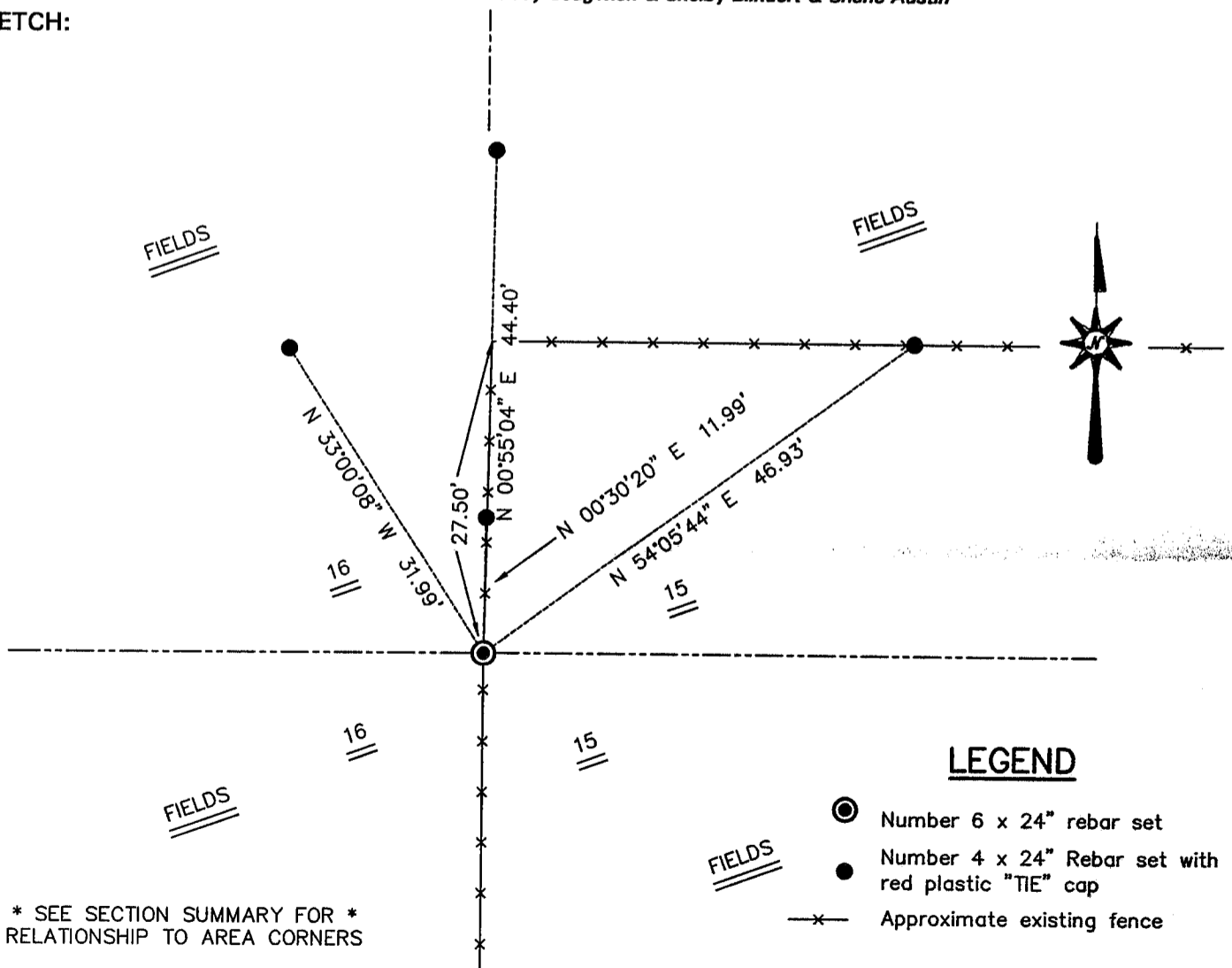
Corner was originally set in 1833 by Harvey Parke.  
Bruce Bowden tied to the corner in 1994.

**DESCRIPTION OF CORNER EVIDENCE FOUND**

I reset Bowden's corner after an EDM & GPS traverse of the area.  
(The corner location is 27.5' South of the newly replaced fence)

**DESCRIPTION OF CORNER AND WITNESS MONUMENTS**, references and accessories used to perpetuate the original or re-established location of this corner. Witnesses to the corner location Bobby Sedgwick & Shelby Blindert & Shane Austin

**SKETCH:**



**LEGEND**

- Number 6 x 24" rebar set
- Number 4 x 24" Rebar set with red plastic "TIE" cap
- x- Approximate existing fence

\* SEE SECTION SUMMARY FOR \*  
RELATIONSHIP TO AREA CORNERS

SKETCH NOT TO SCALE

**AUSTIN ENGINEERING, LLC**

4211 HWY 81 EAST, LANCASTER, WI 53813  
PHONE 608-723-6363 FAX 608-723-6702

FIELDBOOK: SDR33, 9805, 9803

G: \T6NR5W\15A

C: \SWA\TIE\T6NR5W\57

CREW: BS-SB-SA-TF

DRAWN BY: SW AUSTIN  
APPROVED: LL AUSTIN

**CORNER NUMBER 57**