

# CERTIFIED LAND CORNER

## STATE OF WISCONSIN COUNTY OF GRANT

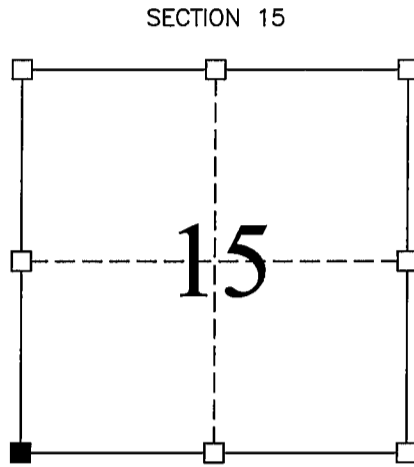
**CERTIFICATE**

I, Stanley King, do hereby certify that on the 10th day of May, 2003, I found no evidence of the South West corner of SECTION 15, T6N, R5W, Fourth Principal Meridian, and I re-established said corner according the Wisconsin Statutes as shown and described hereon.

Dated this 19th day of December, 2003

*Stanley King*  
Registered Land Surveyor--S-2001

Title



■ = Corner Location  
T6N R5W  
Town of: MILLVILLE

Seal:

History of original corner establishment:  
DIVISION OF SECTION

Description of corner evidence found:  
FOUND NO EVIDENCE OF THE CORNER OR ITS WITNESS – ACCEPTED LINE BETWEEN WEST 1/4 CORNER OF SECTION 15 & WEST 1/4 CORNER OF SECTION 22. SET A REBAR WEIGHING A MIN. OF 1.50 LBS. PER LINEAL FOOT WITH GRANT COUNTY MONUMENT CAP.

Description of corner and witness monuments, references, and accessories used to perpetuate the original or re-established location of this corner.

Witnesses to corner location:

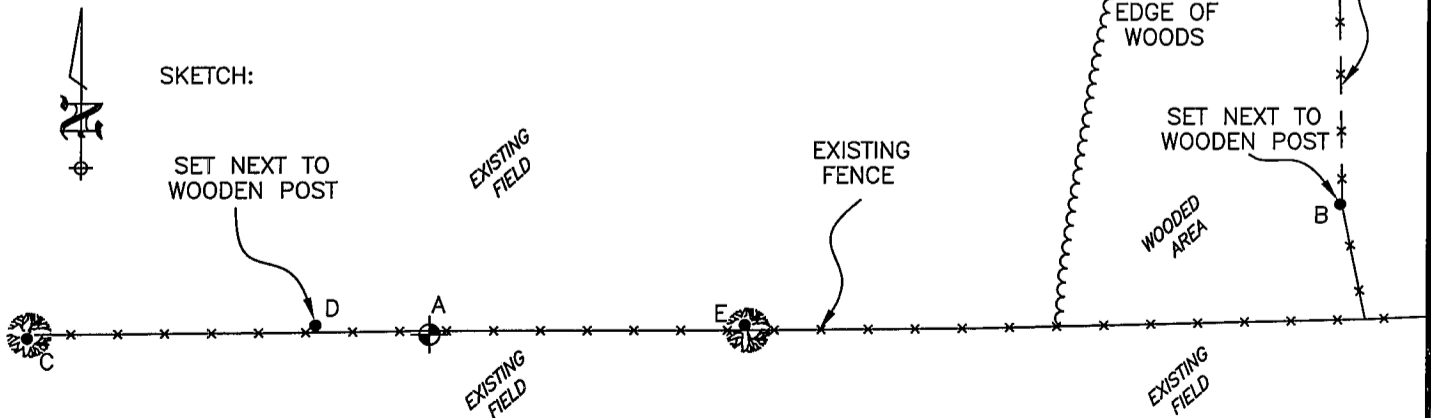
Jeff Brandt  
Chad Coyier

⊕ = SECTION CORNER  
● = TIE BAR

(A-B)=N 81°53'00" E 191.18'  
(A-C)=S 89°28'20" W 83.55'  
(A-D)=N 86°08'03" W 23.58'  
(A-E)=N 88°23'34" E 65.63'

**NOTE:**

All ties set being a 3/4" rebar weighing 1.50 lbs./lin. ft.



**BLACKHAWK**  
**ENGINEERING, Ltd.**

Civil & Municipal Engineers and Building Design  
2 INSIGHT DRIVE OFFICE PHONE: (608) 348-4433  
PLATTEVILLE, WISCONSIN FAX: (608) 348-4449

SURVEY CREW: JJB, CDC  
DRAWN BY: JJB  
DATE: DEC, 2003  
FILE: F:\ACAD\12\2003\03-047\SCITIES.DWG