

CERTIFIED LAND CORNER

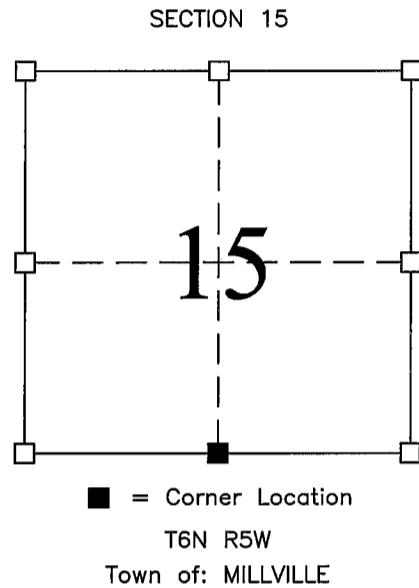
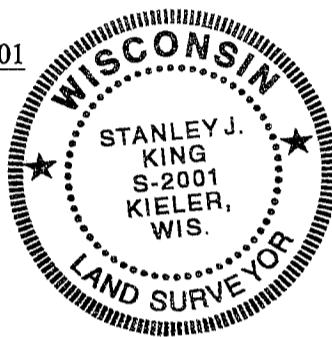
STATE OF WISCONSIN COUNTY OF GRANT

CERTIFICATE

I, Stanley King, do hereby certify that on the 10th day of May, 2003, I found no evidence of the South 1/4 corner of SECTION 15, T6N, R5W, Fourth Principal Meridian, and I re-established said corner according the Wisconsin Statutes as shown and described hereon.

Dated this 19th day of December, 2003

Stanley King
Registered Land Surveyor--S-2001
Title



Seal:

History of original corner establishment:
DIVISION OF SECTION

Description of corner evidence found:

FOUND NO EVIDENCE OF THE CORNER OR ITS WITNESS – ACCEPTED LINE BETWEEN SOUTHWEST CORNER & SOUTHEAST CORNER OF SECTION 15. SET A REBAR WEIGHING A MIN. OF 1.50 LBS. PER LINEAL FOOT WITH GRANT COUNTY MONUMENT CAP.

Description of corner and witness monuments, references, and accessories used to perpetuate the original or re-established location of this corner.

Witnesses to corner location:

Jeff Brandt
Chad Coyier

SKETCH:

