

MAR 4 1994

CERTIFIED LAND CORNER

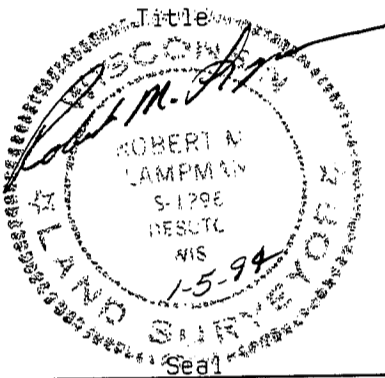
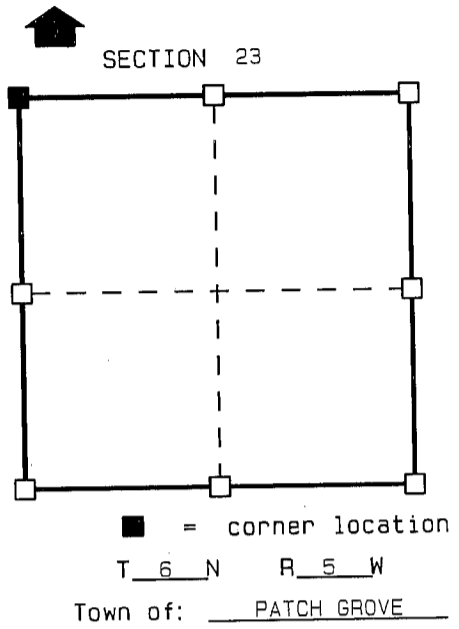
STATE OF WISCONSIN)
COUNTY OF GRANT) S.S.

CERTIFICATE

I, ROBERT M. LAMPMAN do hereby certify that on the 4th day of JANUARY 1994, I found ~~(evidence)~~ (no evidence) of the NW corner of SECTION 23, T 6 N, R 5 W, Fourth Principal Meridian, and I re-established said corner according to the Wisconsin Statutes as shown and described hereon.

Dated this 5th day of JANUARY 1994

ROBERT M. LAMPMAN R.L.S. S-1296



History of original corner establishment:

ORIGINAL CORNER ESTABLISHED BY ORSON LYON IN 1840.

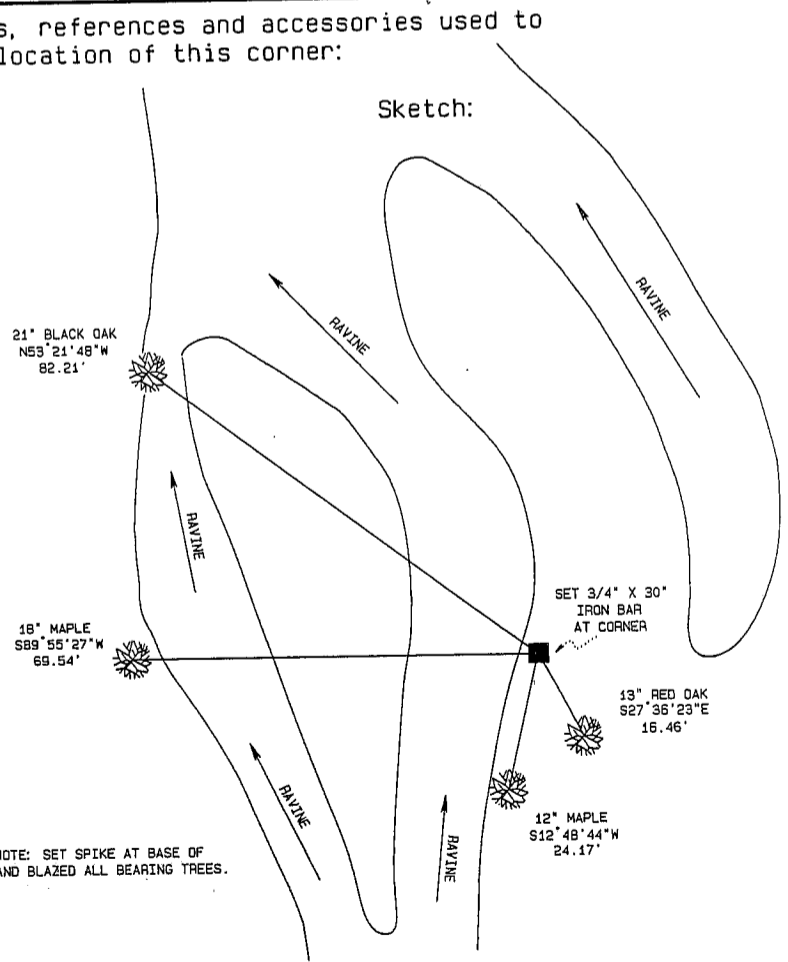
Description of corner evidence found:

SET CORNER AT RECORDED DISTANCES FROM BOTH THE W 1/4 CORNER AND THE N 1/4 CORNER OF SECTION 23.

Description of corner and witness monuments, references and accessories used to perpetuate the original or re-established location of this corner:

Witnesses to corner location:

- ROBERT M. LAMPMAN
- JESSICA A. ZAMOR
- JERRY L. TORGERSON



NOTE: SET SPIKE AT BASE OF AND BLAZED ALL BEARING TREES.

SURVEY CONTROL ORDER

Horizontal				
Vertical				
Corner	East (X)	North (Y)	Elevation (Z)	Zone
Control Sta. Name				

