

CERTIFIED LAND CORNER

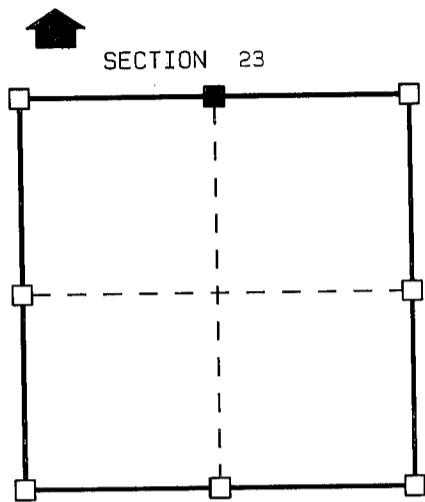
MAR 4 1994

STATE OF WISCONSIN)
 COUNTY OF GRANT) S.S.

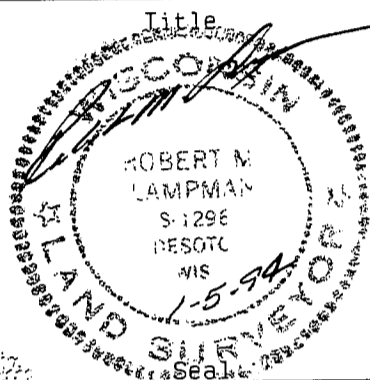
CERTIFICATE

I, ROBERT M. LAMPMAN, do hereby certify that on the 4th day of JANUARY 1994, I found (~~evidence~~) (no evidence) of the N 1/4 corner of SECTION 23, T 6 N, R 5 W, Fourth Principal Meridian, and I re-established said corner according to the Wisconsin Statutes as shown and described hereon.

Dated this 5th day of JANUARY 1994
ROBERT M. LAMPMAN R.L.S. S-1296



■ = corner location
 T 6 N R 5 W
 Town of: PATCH GROVE



History of original corner establishment:

ORIGINAL CORNER ESTABLISHED BY ORSON LYON IN 1840.

Description of corner evidence found:

ESTABLISHED CORNER LOCATION BASED ON A THOROUGH EXAMINATION OF OCCUPATIONAL EVIDENCE ON THE INTERIOR OF SECTION 23.
 SET CORNER AT RECORDED DISTANCE (2648.91') FROM THE NE CORNER OF SECTION 23.

Description of corner and witness monuments, references and accessories used to perpetuate the original or re-established location of this corner:

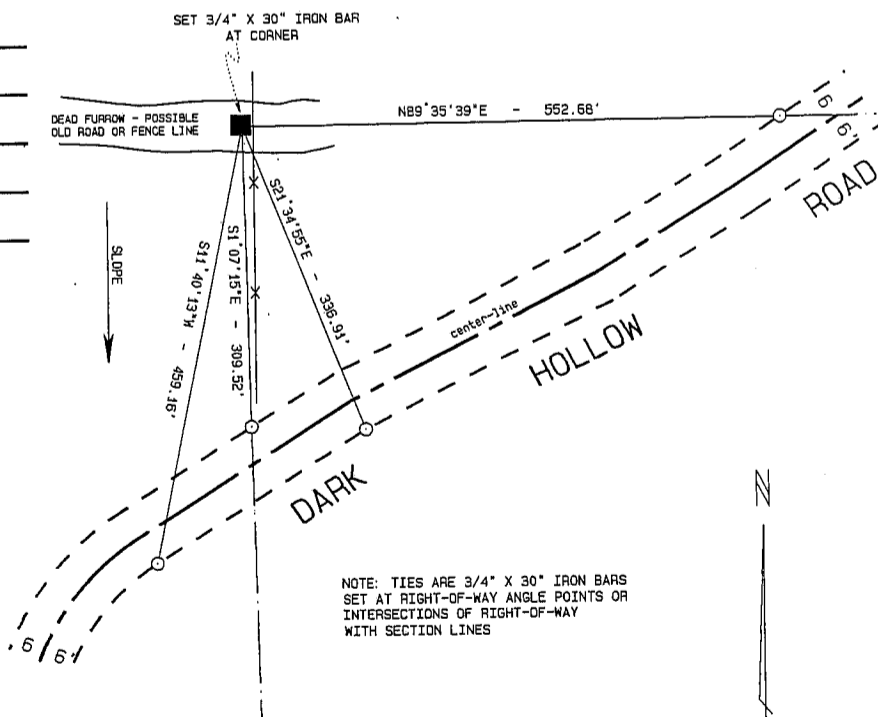
Witnesses to corner location:

ROBERT M. LAMPMAN

JESSICA A. ZAMOR

JERRY L. TORGERSON

Sketch:



NOTE: TIES ARE 3/4" X 30" IRON BARS SET AT RIGHT-OF-WAY ANGLE POINTS OR INTERSECTIONS OF RIGHT-OF-WAY WITH SECTION LINES

SURVEY CONTROL ORDER

Horizontal
Vertical

WISCONSIN COORDINATE SYSTEM

Corner	East (X)	North (Y)	Elevation (Z)	Zone
Control Sta. Name				

DATA SHEET

SECTION 23, T6N, R5W
TOWN OF PATCH GROVE
GRANT COUNTY

N

LEGEND:

○ 3/4" X 30" IRON BAR

