

U.S. PUBLIC LAND SURVEY MONUMENT RECORD - GRANT COUNTY, WI

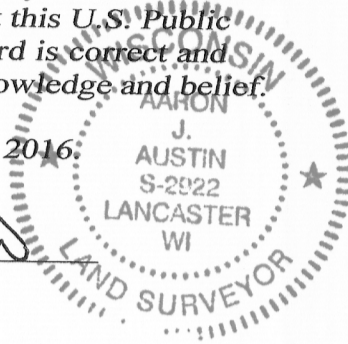
Section 24, Town 6 North Range 5 West, Town of Patch Grove

CERTIFICATE:

I, Aaron J. Austin, Wisconsin Professional Land Surveyor, do hereby certify that the corner location on this record was determined by me and/or under my direct supervision and that this U.S. Public Land Survey Monument Record is correct and complete to the best of my knowledge and belief.

Dated this 11th day of March, 2016:

Aaron J. Austin
 Aaron J. Austin, S-2922



● = CORNER LOCATION

HISTORY OF CORNER ESTABLISHMENT:

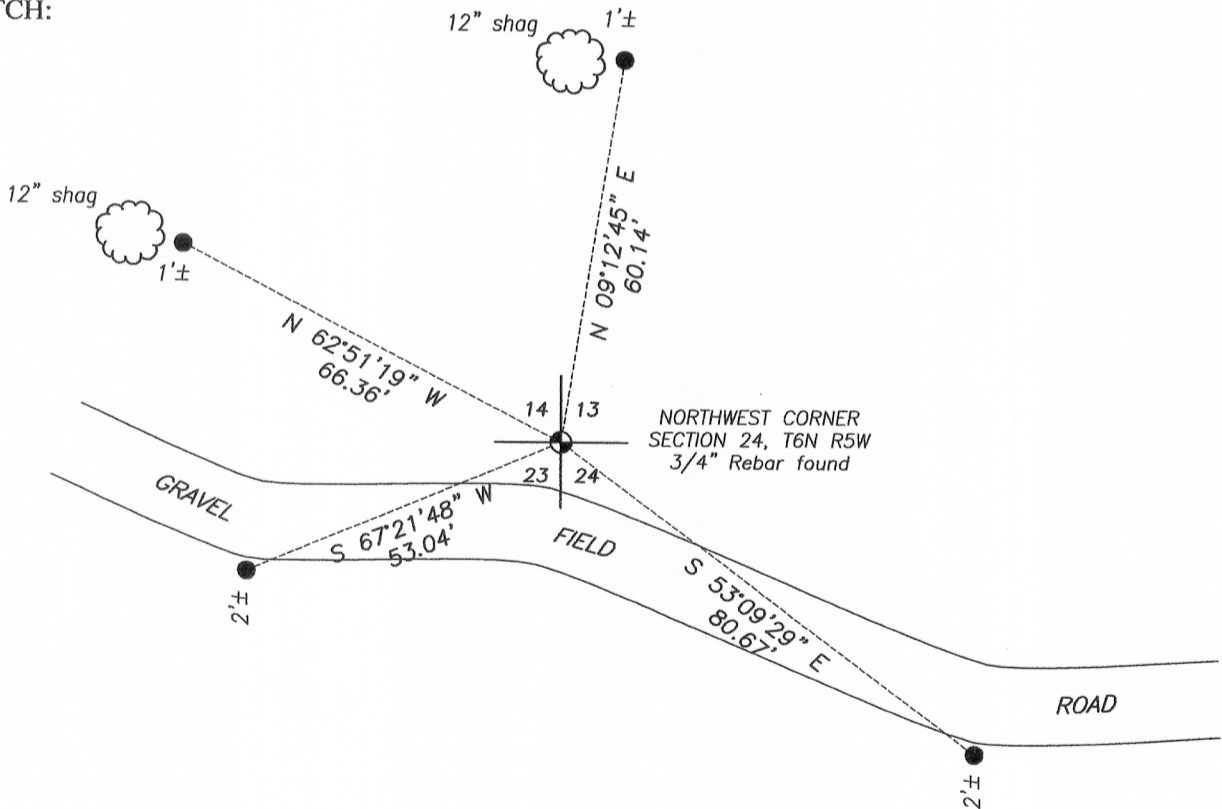
1833-Harvey Parke set original corner.
 1993-Robert Lampman reset the corner and filed a Certified Land Corner record.

DESCRIPTION OF CORNER EVIDENCE FOUND:

I found the 3/4" rebar set by Robert Lampman in place. I set 4 new witness corners after I verified this location with E.D.M. and G.P.S. methods.

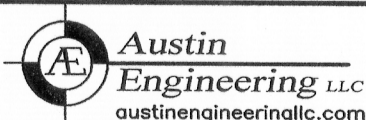
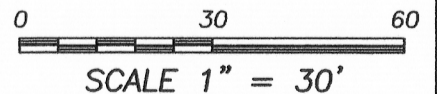
DESCRIPTION OF CORNER AND WITNESS MONUMENTS, references and accessories used to perpetuate the original or re-established location of this corner. Witnesses to corner location Shane Austin.

SKETCH:



LEGEND

- ⊙ Section Corner—as designated
- 1/2" x 12" Rebar set



4211 HWY 81 E, LANCASTER, WI 53813
 PHONE: 608-723-6363 FAX: 608-723-6702

JOB NO: 16s006
 H:\CRD\16s006
 H:\TIE\T6NR5W\63

FIELDBOOK: TDSR
 DRAWN BY: AJ AUSTIN
 CREW: SW AUSTIN

CERTIFIED LAND CORNER

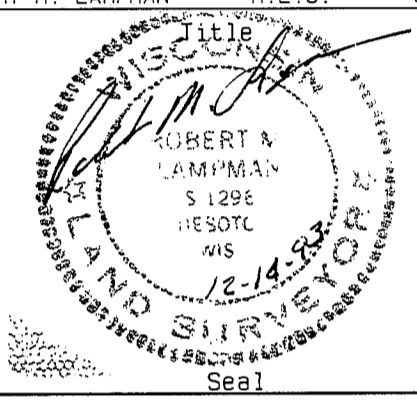
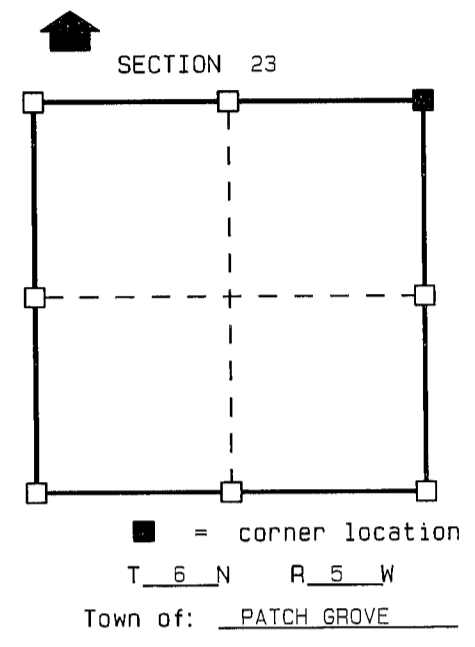
MAR 4 1994

STATE OF WISCONSIN)
 COUNTY OF GRANT) S.S.

CERTIFICATE

I, ROBERT M. LAMPMAN, do hereby certify that on the 8th day of DECEMBER 1993, I found (~~evidence~~) (no evidence) of the NE corner of SECTION 23, T 6 N, R 5 W, Fourth Principal Meridian, and I re-established said corner according to the Wisconsin Statutes as shown and described hereon.

Dated this 14th day of DECEMBER 1993
ROBERT M. LAMPMAN R.L.S. S-1296



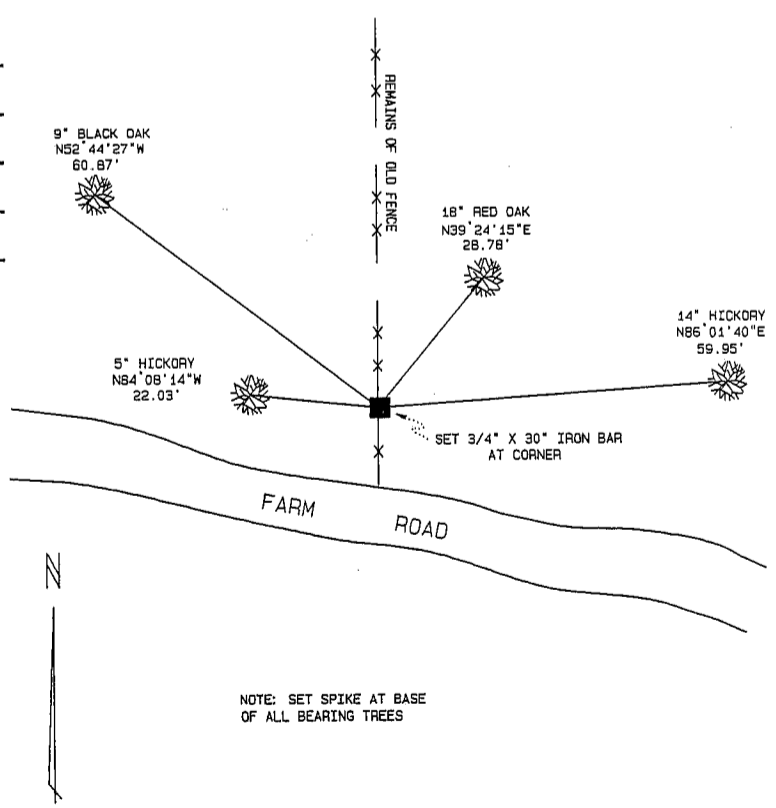
History of original corner establishment:
 ORIGINAL CORNER ESTABLISHED BY ORSON LYON IN 1840.

Description of corner evidence found:
 ESTABLISHED CORNER LOCATION BASED ON A THOROUGH EXAMINATION OF OCCUPATIONAL EVIDENCE ON THE INTERIOR OF SECTION 23.

Description of corner and witness monuments, references and accessories used to perpetuate the original or re-established location of this corner:

Witnesses to corner location:
ROBERT M. LAMPMAN
JESSICA A. ZAMOR

Sketch:



NOTE: SET SPIKE AT BASE OF ALL BEARING TREES

SURVEY CONTROL ORDER

Horizontal
Vertical

WISCONSIN COORDINATE SYSTEM

Corner	East (X)	North (Y)	Elevation (Z)	Zone
Control Sta. Name				

DATA SHEET

SECTION 23, T6N, R5W TOWN OF PATCH GROVE GRANT COUNTY



LEGEND:
 ○ 3/4" X 30" IRON BAR

