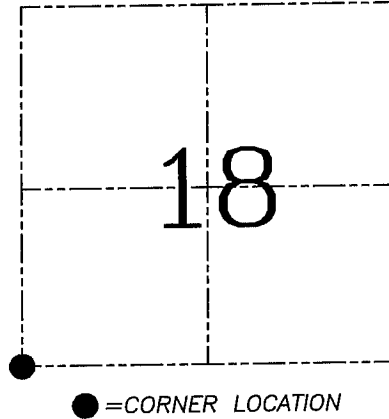
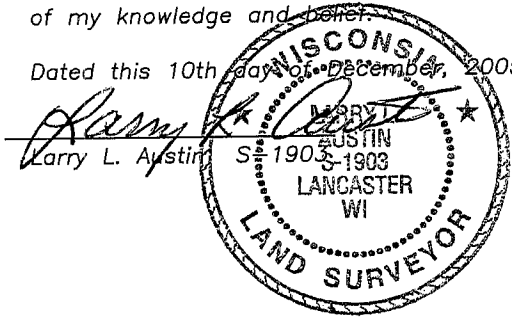


**U.S. PUBLIC LAND SURVEY MONUMENT RECORD – GRANT COUNTY, WI**  
**Section 18, Town 6 North Range 4 West, Town of Mount Hope**

CERTIFICATE

I, Larry L. Austin, do hereby certify that the corner location on this record was determined by me and/or under my direct supervision and that this U.S. public land survey monument record is correct and complete to the best of my knowledge and belief.

Dated this 10th day of December, 2005



HISTORY OF CORNER ESTABLISHMENT

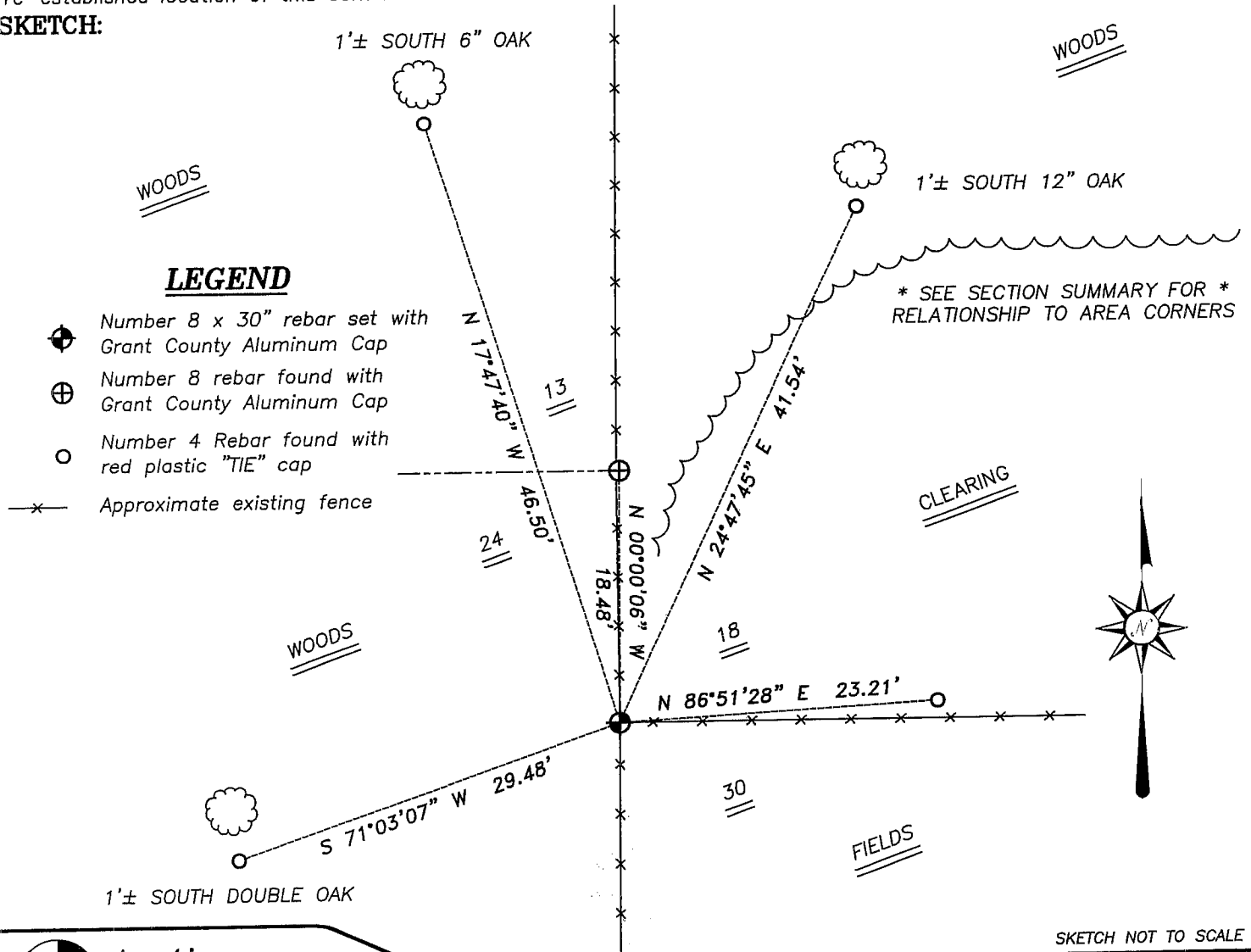
Corner was originally set in 1833 by Parke.  
 No other record of the corner was found.

DESCRIPTION OF CORNER EVIDENCE FOUND

I reset the corner at the recorded offset from the existing Southeast corner of Section 13. Verified this location using EDM & GPS methods.

DESCRIPTION OF CORNER AND WITNESS MONUMENTS, references and accessories used to perpetuate the original or re-established location of this corner. Witnesses to corner location Bobby Sedgwick & Brad Digman & Shane Austin

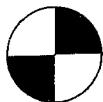
**SKETCH:**



**LEGEND**

- Number 8 x 30" rebar set with Grant County Aluminum Cap
- ⊕ Number 8 rebar found with Grant County Aluminum Cap
- Number 4 Rebar found with red plastic "TIE" cap
- x— Approximate existing fence

SKETCH NOT TO SCALE



**Austin Engineering LLC**

4211 HWY 81 E, LANCASTER, WI 53813  
 PHONE 608-723-6363 FAX 608-723-6702

JOB NUMBER 05S207  
 FIELDBOOK: TDSR, 2517  
 G:\T6NR5W\13  
 H:\TIE\T6NR4W\73

DRAWN BY: SW AUSTIN  
 APPROVED: LL AUSTIN

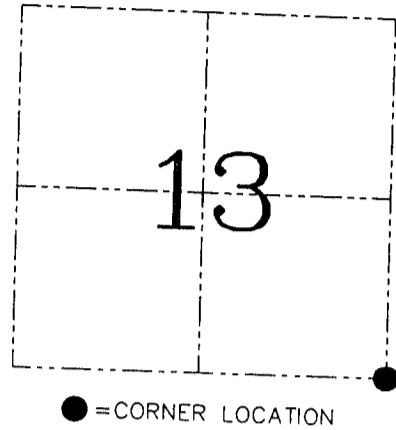
**U.S. PUBLIC LAND SURVEY MONUMENT RECORD - GRANT COUNTY, WI**  
 Section 13, Town 6 North Range 5 West, Town of Millville

CERTIFICATE

I, Larry L. Austin, do hereby certify that the corner location on this record was determined by me and/or under my direct supervision and that this U.S. public land survey monument record is correct and complete to the best of my knowledge and belief.

Dated this 15th day of July, 2002

*Larry L. Austin*  
 Larry L. Austin S-1903



HISTORY OF CORNER ESTABLISHMENT

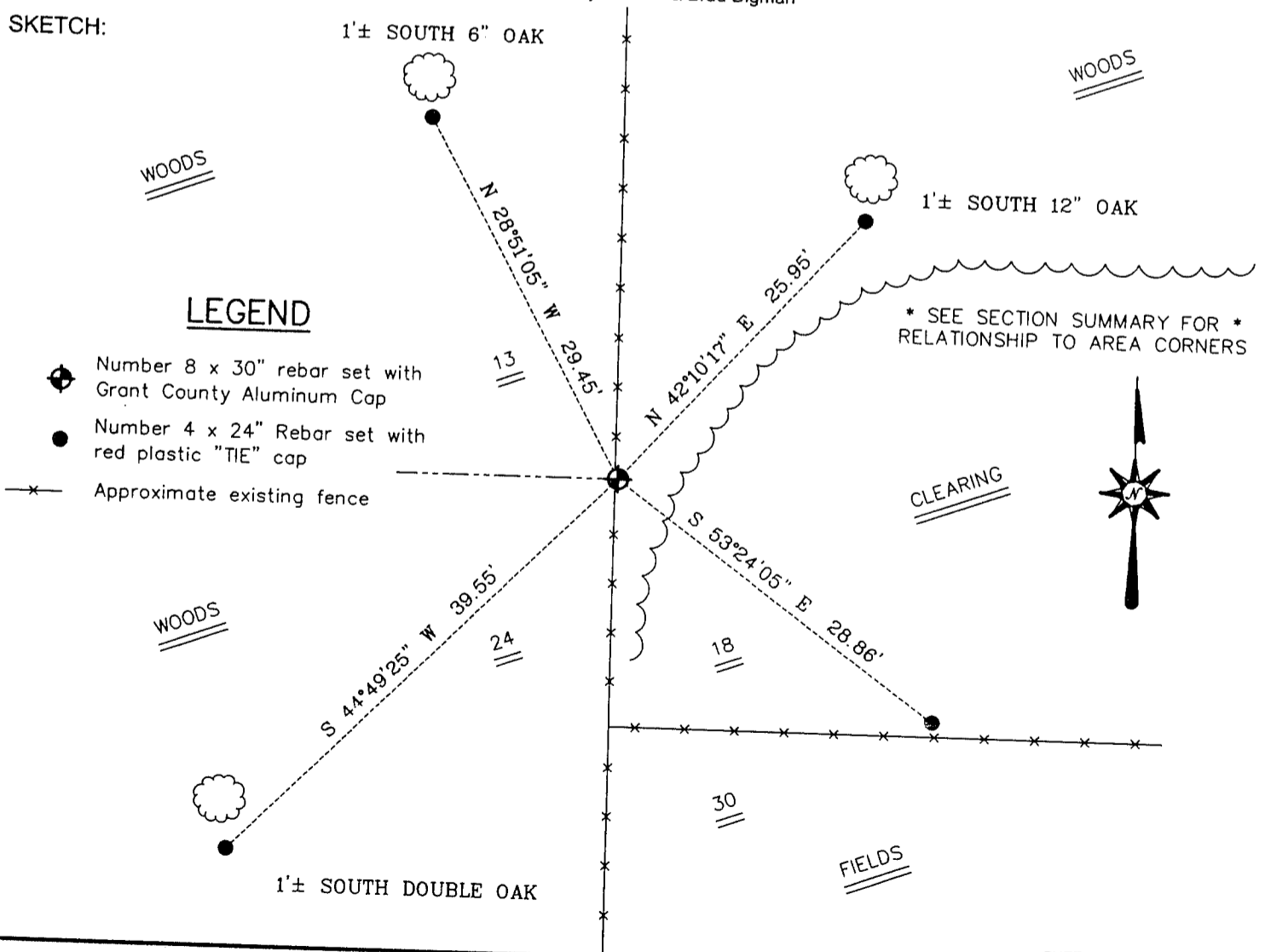
Corner was originally set in 1832 by Sibley.  
 No other record of the corner was found.

DESCRIPTION OF CORNER EVIDENCE FOUND

I reset the corner at the recorded offset from the occupied Northwest corner of Section 30. Verified this location using EDM & GPS methods.

DESCRIPTION OF CORNER AND WITNESS MONUMENTS, references and accessories used to perpetuate the original or re-established location of this corner. Witnesses to the corner location Bobby Sedgwick & Shelby Blindert & Brad Digman

SKETCH:



SKETCH NOT TO SCALE

**AUSTIN ENGINEERING, LLC**  
 4211 HWY 81 EAST, LANCASTER, WI 53813  
 PHONE 608-723-6363 FAX 608-723-6702

FIELDBOOK: SDR33, 2227  
 G: \T6NR5W\13  
 C: \SWA\TIE\T6NR5W\61  
 CREW: BS-SB-SA-BD

DRAWN BY: SW AUSTIN  
 APPROVED: LL AUSTIN

**CORNER NUMBER 61**