

CERTIFIED LAND CORNER

STATE OF WISCONSIN COUNTY OF GRANT

CERTIFICATE

I, Stanley King, do hereby certify that on the 10th day of May, 2003, I found no evidence of the North 1/4 corner of SECTION 14, T6N, R5W, Fourth Principal Meridian, and I re-established said corner according the Wisconsin Statutes as shown and described hereon.

Dated this 19th day of December, 2003

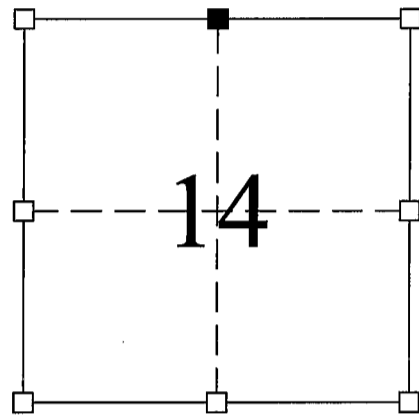
Stanley King
Registered Land Surveyor--S-2001

Title



Seal:

SECTION 14



■ = Corner Location
T6N R5W
Town of: MILLVILLE

History of original corner establishment:
DIVISION OF SECTION

Description of corner evidence found:

FOUND NO EVIDENCE OF THE CORNER OR ITS WITNESS – ACCEPTED LINE BETWEEN NORTHWEST CORNER OF SECTION 14 & NORTHEAST CORNER OF SECTION 14. SET A REBAR WEIGHING A MIN. OF 1.50 LBS. PER LINEAL FOOT WITH GRANT COUNTY MONUMENT CAP.

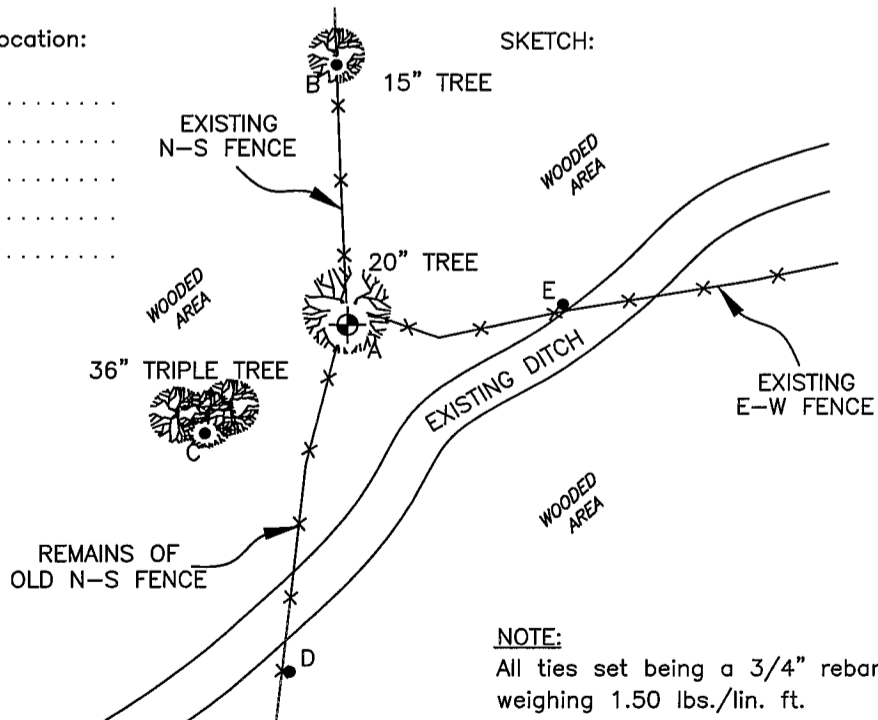
Description of corner and witness monuments, references, and accessories used to perpetuate the original or re-established location of this corner.

Witnesses to corner location:

Jeff Brandt
Chad Coyier

⊙ = SECTION CORNER
● = TIE BAR

(A-B)=N 2°36'32" W 33.99'
(A-C)=S 52°24'27" W 23.37'
(A-D)=S 9°07'01" W 46.09'
(A-E)=N 84°34'15" E 28.06'



Civil & Municipal Engineers and Building Design
2 INSIGHT DRIVE OFFICE PHONE: (608) 348-4433
PLATTEVILLE, WISCONSIN FAX: (608) 348-4449

SURVEY CREW: JJB, CDC
DRAWN BY: JJB, JRP
DATE: DEC, 2003
FILE: F:\ACAD12\2003\03-047\SCTIES.DWG