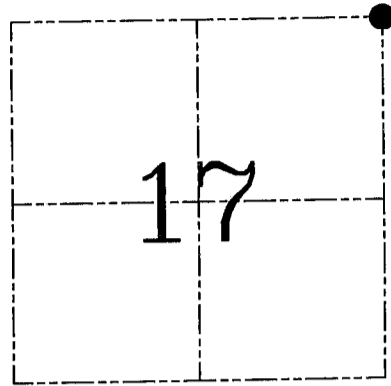
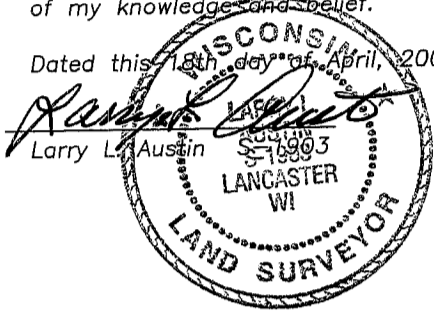


**U.S. PUBLIC LAND SURVEY MONUMENT RECORD – GRANT COUNTY, WI**  
**Section 17, Town 6 North Range 5 West, Town of Millville**

CERTIFICATE

I, Larry L. Austin, do hereby certify that the corner location on this record was determined by me and/or under my direct supervision and that this U.S. public land survey monument record is correct and complete to the best of my knowledge and belief.

Dated this 18th day of April, 2005



● = CORNER LOCATION

HISTORY OF CORNER ESTABLISHMENT

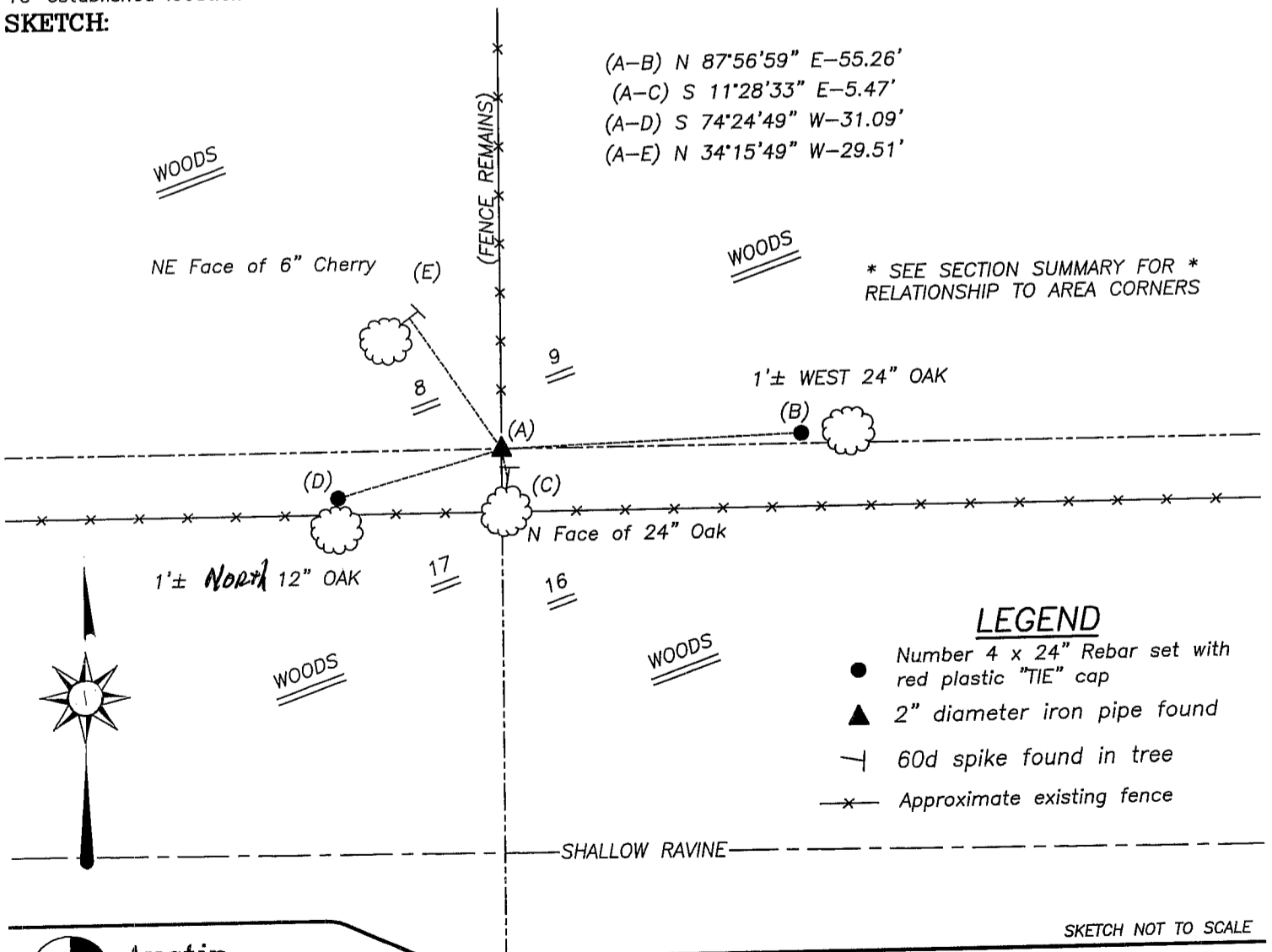
Corner was originally set in 1833 by Parke. In 1983 Lampman set a 2" iron pipe in conjunction with surveying in Section 8. No other record of the corner was found.

DESCRIPTION OF CORNER EVIDENCE FOUND

I found the 2" iron pipe and accepted it's location after an EDM & GPS traverse of the area. I set two new witness monuments as shown below.

DESCRIPTION OF CORNER AND WITNESS MONUMENTS, references and accessories used to perpetuate the original or re-established location of this corner. Witnesses to corner location Bobby Sedgwick & Brad Digman & Shelby Blindert

**SKETCH:**



**LEGEND**

- Number 4 x 24" Rebar set with red plastic "TIE" cap
- ▲ 2" diameter iron pipe found
- └ 60d spike found in tree
- x- Approximate existing fence

SKETCH NOT TO SCALE

**Austin Engineering LLC**  
 4211 HWY 81 E, LANCASTER, WI 53813  
 PHONE 608-723-6363 FAX 608-723-6702

JOB NUMBER 05S093  
 FIELDBOOK: TDSR, 2505  
 G:\T6NR6W\18  
 H:\TIE\T6NR5W\49

DRAWN BY: BJ HAZEN  
 APPROVED: LL AUSTIN