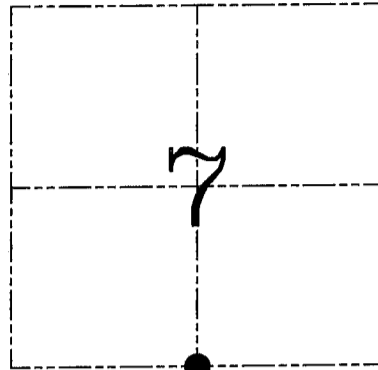
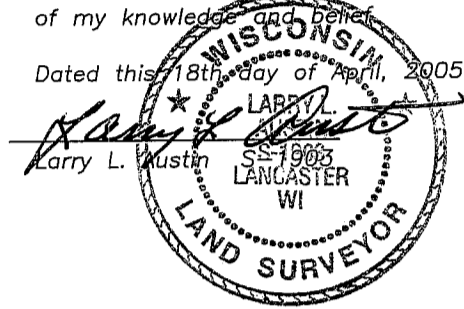


U.S. PUBLIC LAND SURVEY MONUMENT RECORD – GRANT COUNTY, WI
Section 7, Town 6 North Range 5 West, Town of Millville

CERTIFICATE

I, Larry L. Austin, do hereby certify that the corner location on this record was determined by me and/or under my direct supervision and that this U.S. public land survey monument record is correct and complete to the best of my knowledge and belief.

Dated this 18th day of April, 2005



● = CORNER LOCATION

HISTORY OF CORNER ESTABLISHMENT

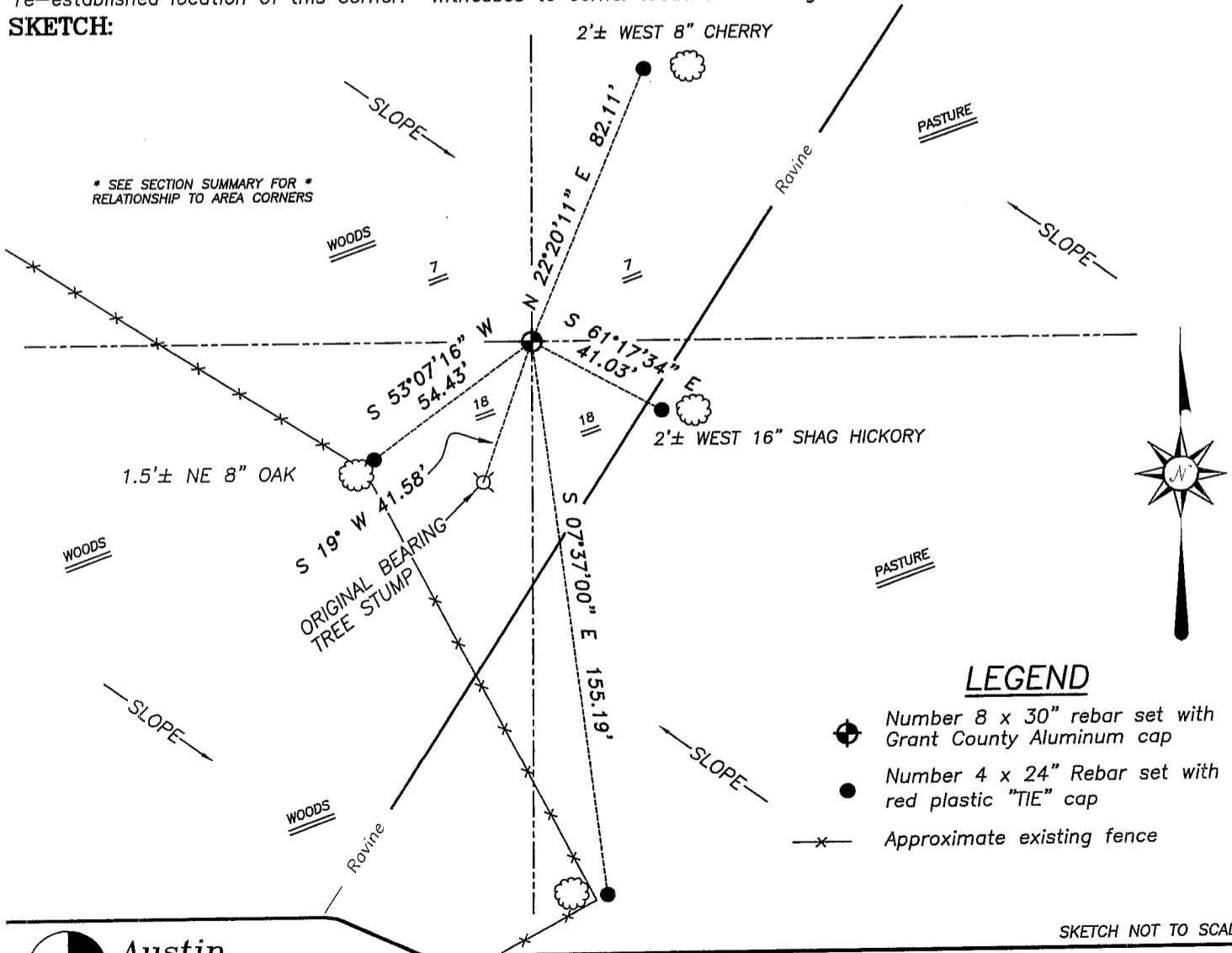
Corner was originally set in 1833 by Parke.
 No other record of the corner was found.

DESCRIPTION OF CORNER EVIDENCE FOUND

I found one of the bearing tree stumps. I reset the corner at the recorded bearing and distance from said stump. Verified this location using EDM & GPS methods.

DESCRIPTION OF CORNER AND WITNESS MONUMENTS, references and accessories used to perpetuate the original or re-established location of this corner. Witnesses to corner location Brad Digman & Shane Austin.

SKETCH:



LEGEND

- Number 8 x 30" rebar set with Grant County Aluminum cap
- Number 4 x 24" Rebar set with red plastic "TIE" cap
- ✕ Approximate existing fence

SKETCH NOT TO SCALE

Austin Engineering LLC
 4211 HWY 81 E, LANCASTER, WI 53813
 PHONE 608-723-6363 FAX 608-723-6702

JOB NUMBER 05S034
 FIELDBOOK: TDSR, 2505
 G:\T6NR6W\18
 H:\TIE\T6NR5W\50

DRAWN BY: BJ HAZEN
 APPROVED: LL AUSTIN



52