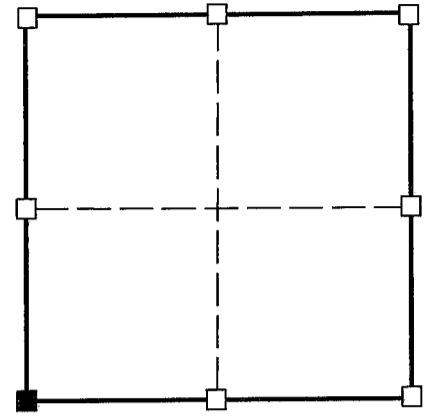


U.S. PUBLIC LAND SURVEY MONUMENT RECORD – GRANT COUNTY, WI

(a) Corner location:

Township 6 North
 Range 5 West
 Town of MILLVILLE

I, Richard Marks certify that the corner location on this record was determined by me and that this U.S. public land survey monument record is correct and complete to the best of my knowledge and belief.



■ = corner location

Section 8



Dated this 29th day of May, 2000

[Signature]
 Richard Marks R.L.S. # S-1473

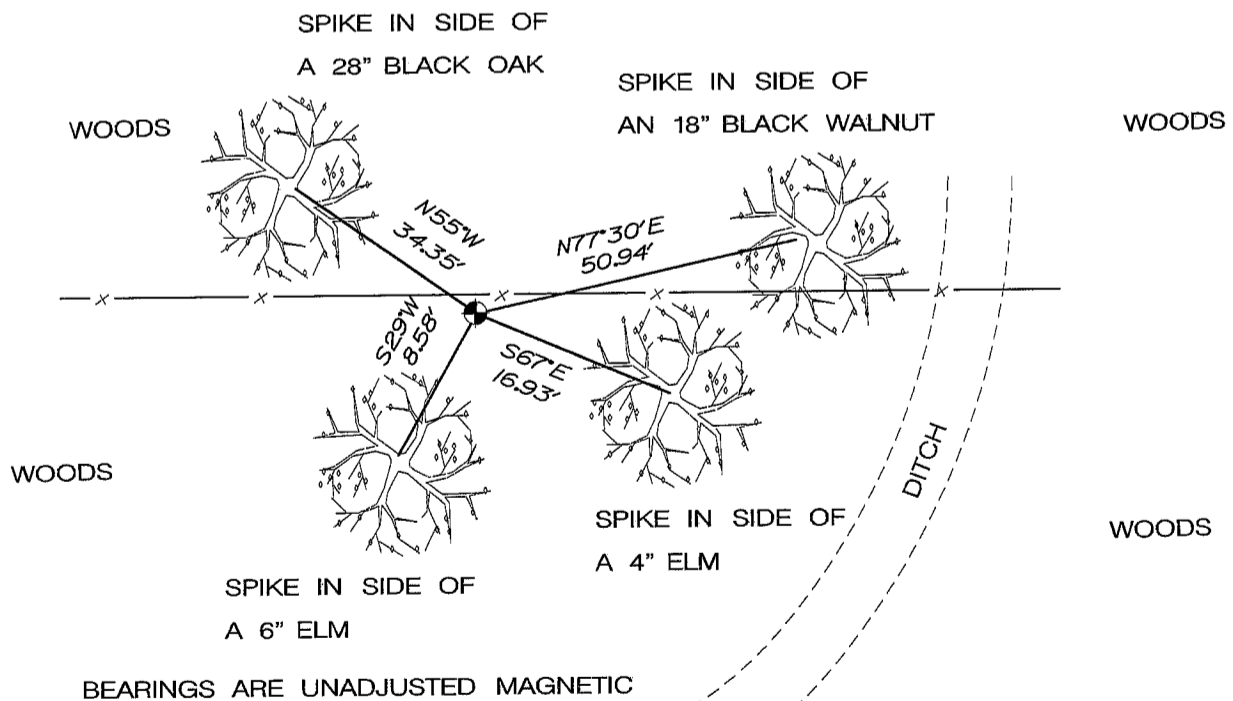
History of corner establishment:

Original survey was done by Robert Clark in 1832. No other record of corner found.

Description of corner evidence found:

I found the 3" iron pipe which I believe was set by Lampman. Loyd Beesecker said that Cecka used this corner while doing survey work for him in the summer of 1999. I did not find a corner form on record for this corner but used the 3" iron pipe and set a 1" iron rod with a Grant County aluminum cap.

Description of corner and witness monuments, references and accessories used to perpetuate the original or re-established location of this corner.



Control: COMBINATION OF GPS AND CONVENTIONAL FIELD CONTROL

Datum: WHP NETWORK		County coordinates		State plane coordinates (1983 NAD)	
Lat.		North	N 580393.13270	North	
Long.		East	E 740795.59553	East	